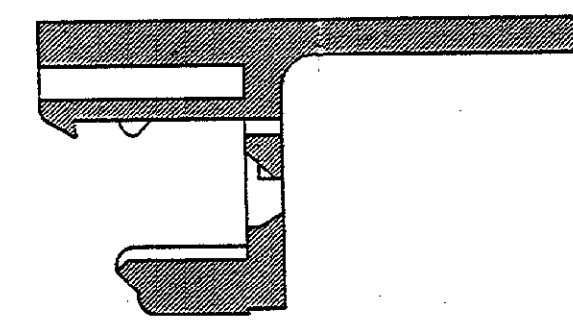
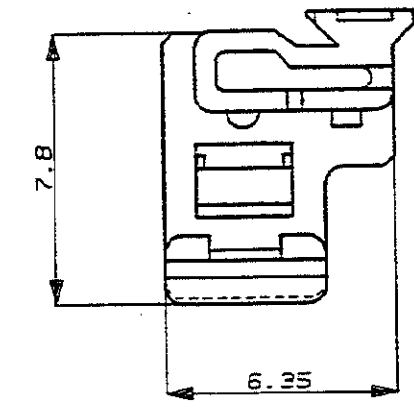
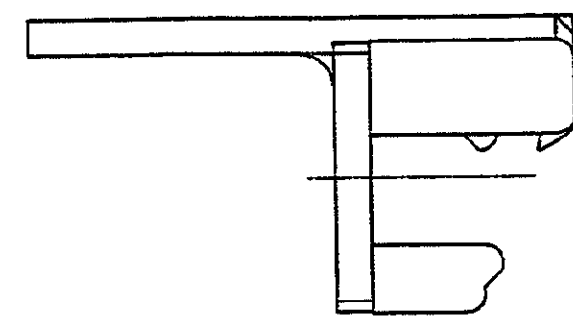
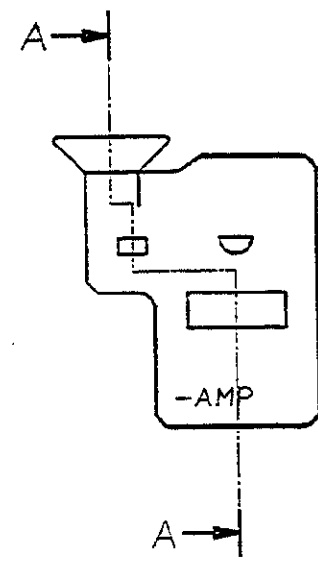


NUMBER C-175916

3rd ANGLE PROJECTION

METRIC

4 3 2 1



断面 A-A  
SECT.

注;

- 1. 装着相手型番  
 3極キャップハウジング P/N 175912-5  
 (1極側に装着)  
 5極キャップハウジング P/N 175920-5  
 (1極側に装着)

NOTES;

1 MATING HOUSING PART NUMBERS ARE  
 175912-5 AND 175920-5

175916-8	ORANGE オレンジ	1
P/N 型番	COLOR 色	NO. 項番

Copyright ©1990 AMP (Japan) LTD. ALL RIGHTS RESERVED.		Copyright ©1990 AMP (Japan) LTD. ALL RIGHTS RESERVED.		<b>AMP</b>		AMP (JAPAN), LTD. Tokyo, Japan		
WIRE RANGE mm <sup>2</sup> (AWG)		INSULATION DIA mm		NAME AIR BAG CONNECTOR 1Pos. DOUBLE LOCK PLATE エアバック コネクタ 1極 キャップ用ダブルロックプレート				
MATERIAL PBT		FINISH		GENERAL TOLERANCE		SIZE A3	LOC J	NUMBER C-175916
A	REVISED 2/8/90 J-12513 KO SL 5/8/90	DR. Y. Fujimori 4/26/90		DE. K. Oda 4/26/90		0<math>mm</math> 10 : $\pm 0.2$		
O	RELEASED 7/8/90 J-12471 KO SI 5/8/90	CHK. S. Kobayashi 5/8/90		APP. M. Nouchi 5/8/90		10<math>mm</math> 30 : $\pm 0.25$	SCALE 5-1	REV. A
LTR	REVISION RECORD	DR	CHK	DATE		30<math>mm</math> 100 : $\pm 0.3$		SHEET //
				ANGLES : $\pm 3^\circ$				

CUSTOMER DRAWING

PRINT DIST DIMENSIONS IN MILLIMETERS. DO NOT SCALE PRINT

AMP-J  
REV. 10/89