

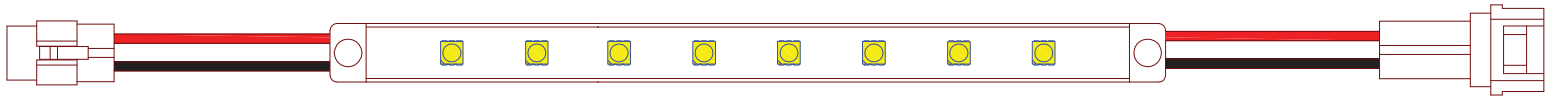
ALUMILINE[®] c UL[®] US LISTED WATER RESISTANT

ZWF-SERIES



Accessories:

| | | | |
|------------|---------------------------|-----------|--------------------------------|
| ZWF-1000-I | Input Connector | ZPS-2435 | — 24 Volt Power Supplies |
| ZWF-400-J | Joiner Connector | ZPS-2460 | |
| ZWF-12-C | Mounting Clip | ZPS-24150 | |
| ZWF-1290-C | Right Angle Mounting Clip | | |
| ZDM-01 | PWM LED Dimmer | | |



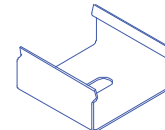
ALUMILINE[®] ZWF DIAGRAM



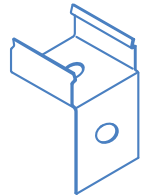
ZWF-400-J



ZWF-1000-I



ZWF-12-C



ZWF-1290-C

APPLICATIONS

JKL's UL listed Alumiline[®] LED ZWF-series light bars are commonly used in sign applications, architectural accent lighting, display case illumination and decorative lighting. Slimmer than the ZAF Alumiline[®] series, the ZWF fixtures use less power and are dust and water resistant with a rating of IP67.

WHITE RANGE

The Alumiline[®] ZWF series is available in two color temperatures:

6000°K
COOL

3000°K
WARM

LENGTH

The Alumiline[®] ZWF series comes in five lengths - 337mm, 438mm, 638mm, 939mm and 1239mm. The design allows for joining fixtures together with a jumper connector, rated for a maximum of 5.0 Amps. The jumper connector comes in four lengths; 175mm, 200mm, 400mm and 915mm.



ROHS COMPLIANT
ISO9001 CERTIFIED

WWW.JKLLAMPS.COM
SALES@JKLLAMPS.COM

800-421-7244

Quality Lighting Solutions
JKL[®]
COMPONENTS
CORPORATION

Since 1972

ZWF-SERIES

POWER INPUT

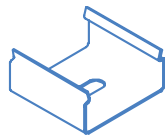
The ZWF bars operate on 24 VDC with a general power requirement of 3 Watts per linear foot. The current requirement for the longest unit (1.2meter or 4 feet) is 480mA. An input connector (ZWF-1000-I) plugs into the strip and connects to a 24 VDC power supply with wire nuts. The connector has a maximum rating of 5.0 Amps. 12 meters (40') of the LED bar can be connected without overheating.

CONNECTION & DISCONNECTION

Disconnect power before installing or servicing the fixtures. The ZWF series LED linear strips have IP67 rated connectors. You may connect the strips in series, or if additional spacing is required between units a jumper is available (in 8", 16" and 36" lengths) for interconnecting. The power input connection has 3' wires for remotely placing your power supply. The connector linking the fixture can be disconnected by depressing the black tab and pulling.

INSTALLATION & MOUNTING

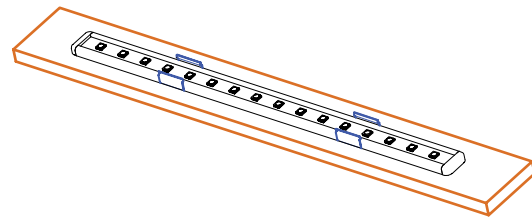
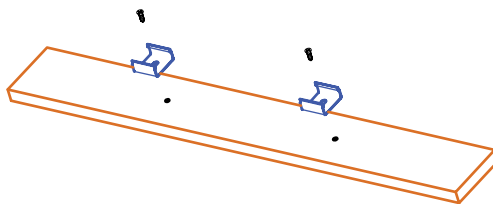
The ZWF fixtures are fitted with mounting holes for ease of installation. Optional mounting clips are recommended for additional support when high winds or vibrations are present. Use a #8 screw for installation



ZWF-12-C MOUNTING CLIP



ZWF-1290-C 90° MOUNTING CLIP



OUTPUT DIMMING

Optimum dimming is accomplished with a PWM, such as the ZDM-01, which will maintain power to the ZWF Alumiline[®]. The dimmer varies the duty-cycle to the LED which permits easy changes to the light output.



ROHS COMPLIANT
ISO9001 CERTIFIED

Quality Lighting Solutions
JKL[®]
COMPONENTS CORPORATION
WWW.JKLLAMPS.COM
SALES@JKLLAMPS.COM
800-421-7244
Since 1972