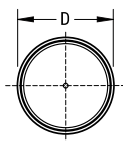
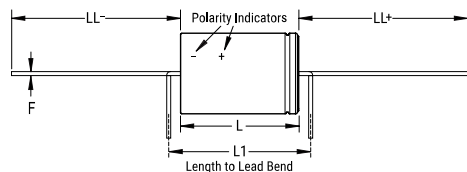


KEMET Part Number: PEG130KL4390QL1
(PEG130KL4390Q)

PEG130, Aluminum Electrolytic, 105C, 3,900 uF, -10/+30%, 40 VDC, -40/+105C



| Dimensions | |
|-------------|---------------|
| D | 20mm +/-0.5mm |
| L | 46mm +/-1mm |
| L1 | 52mm MIN |
| LL Negative | 40mm +/-2mm |
| LL Positive | 40mm +/-2mm |
| F | 1mm +/-0.03mm |

| Packaging Specifications | |
|--------------------------|-----------|
| Weight: | 24 g |
| Packaging: | Bulk, Bag |
| Packaging Quantity: | 100 |

| General Information | |
|---------------------|--|
| Supplier: | KEMET |
| Series: | PEG130 |
| Dielectric: | Aluminum Electrolytic |
| Style: | Axial |
| Description: | Long Life Axial Aluminum Electrolytic |
| Features: | Long Life |
| RoHS: | Yes |
| Lead: | Wire Leads |
| Notes: | L1 is KEMETs recommendation for minimum distance between symmetrical Lead bend. Available only for Customer specific part numbers. Lead bend dimensions must be specified and confirmed per article. |

| Specifications | |
|------------------------|--|
| Capacitance: | 3,900 uF |
| Capacitance Tolerance: | -10/+30% |
| Voltage DC: | 40 VDC |
| Temperature Range: | -40/+105C |
| Rated Temperature: | 105C |
| Life: | 37000 Hrs |
| Resistance: | 33 mOhms (100Hz 20C), 19 mOhms (100kHz 20C), 11.3 mOhms (5-100kHz 105C) |
| Ripple Current: | 2.18 Amps (100Hz 105C), 12.3 Amps (5kHz 60C), 10 Amps (5kHz 80C), 5.5 Amps (5kHz 100C), 3.6 Amps (>=5kHz 105C) |
| Leakage Current: | 472 uA (5min 20C) |