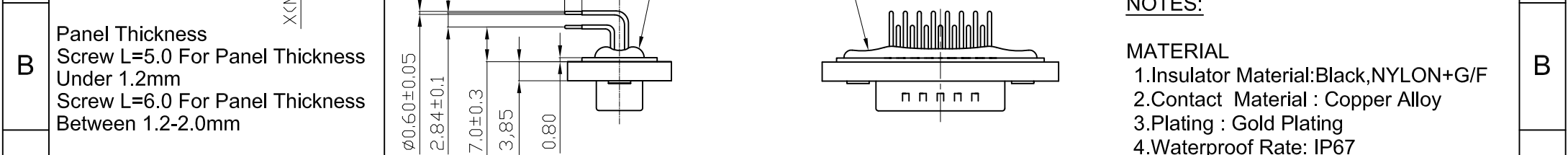


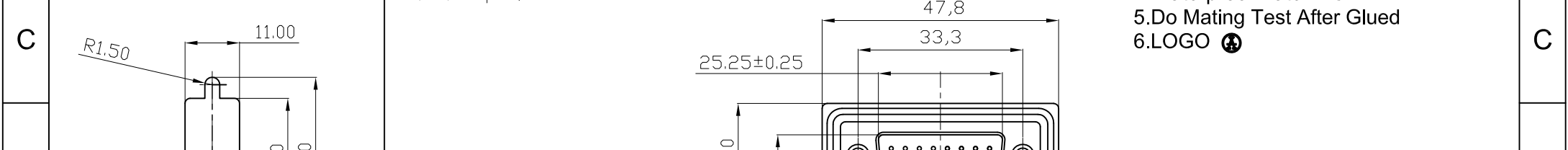
Panel Thickness  
 Screw L=5.0 For Panel Thickness Under 1.2mm  
 Screw L=6.0 For Panel Thickness Between 1.2-2.0mm



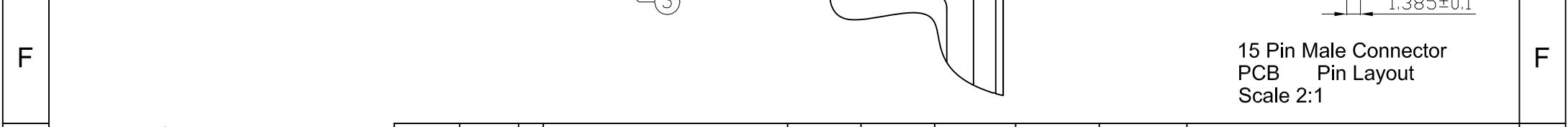
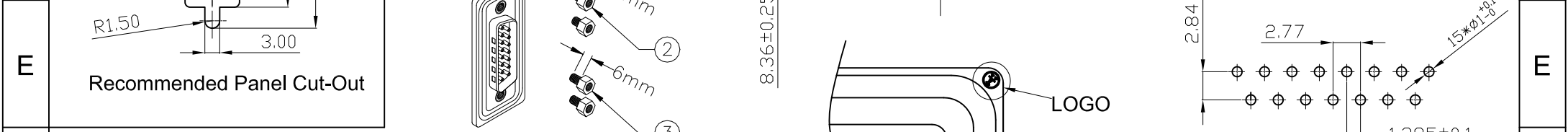
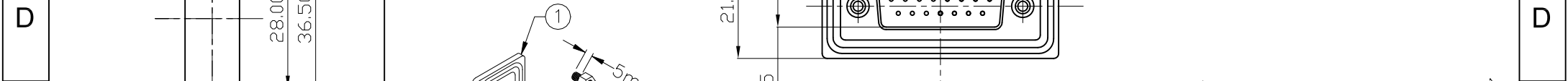
**NOTES:**

**MATERIAL**

1. Insulator Material: Black, NYLON+G/F
2. Contact Material : Copper Alloy
3. Plating : Gold Plating
4. Waterproof Rate: IP67
5. Do Mating Test After Glued
6. LOGO



Recommended Panel Cut-Out



**RoHS compliant**

Scale	1:1						Date	Name	Customer-No.
TOLERANCE							Drawn	24.12.2008	JACK
X.X	±0.25						Approved	24.12.2008	Hellwig
X.XX	±0.10								
X.XXX	±0.05								
DIM	TOL								
ANGLE	±1°								
X.X°	±X°	①	Drawn	24.12.2008	JACK			ASSMANN WSW-No. <b>A-DS 15 AA-WP</b>	
Angle	TOL	Id.	Modification	Date	Name			Drawing-No. <b>ASS 3255 CO</b>	
									Replace
									Sheet