

DWG. NO.  
SD-49749-001

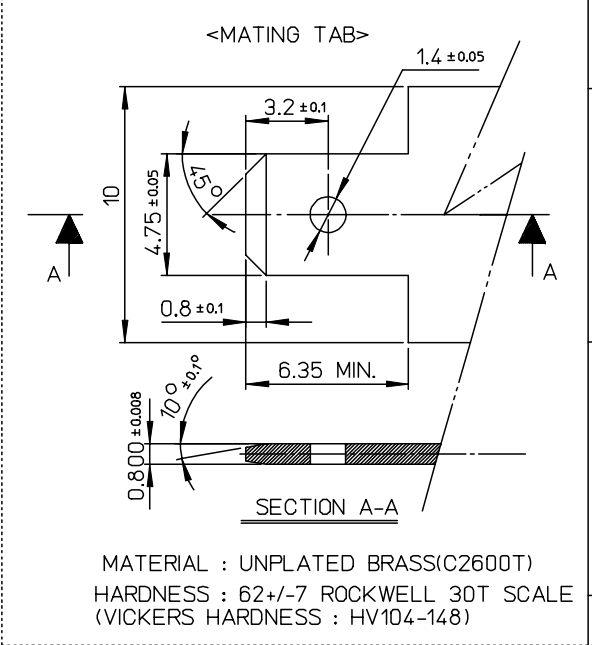
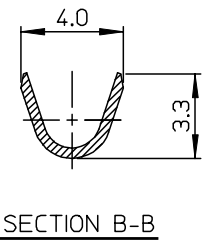
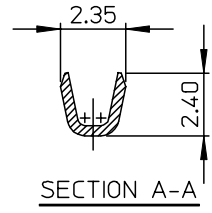
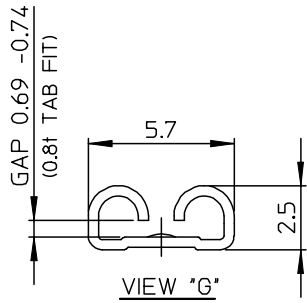
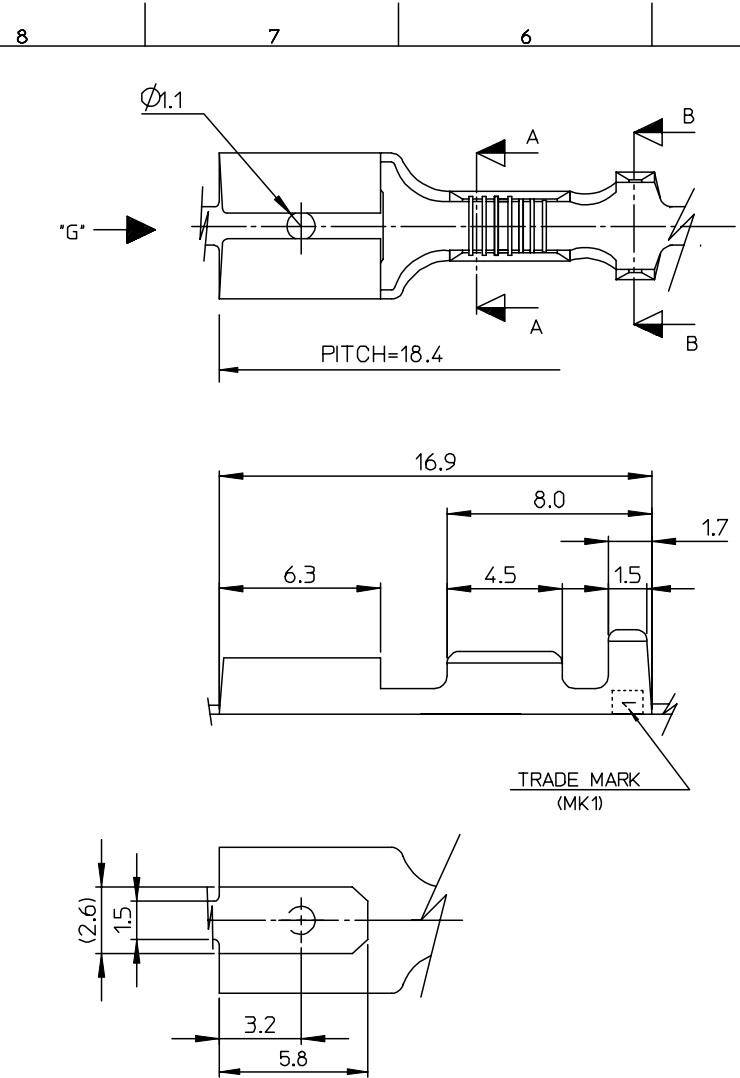
SIMILAR ITEM

PROJECT NO.

C

B

DO NOT SCALE DRAWING  
DIMENSION IN METRIC

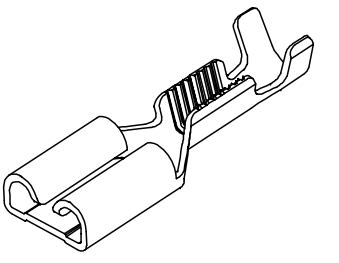


MATERIAL : UNPLATED BRASS(C2600T)  
HARDNESS : 62+/-7 ROCKWELL 30T SCALE  
(VICKERS HARDNESS : HV104-148)

- NOTES
1. MATERIAL : PHOSPHER BRONZE(C5210-1/2H), 0.4mm THICKNESS
  2. FINISH : POST TIN PLATED  
(1.0 MICROMETER MIN.TIN OVER 0.3MICROMETER MIN.COPPER)
  3. APPLICABLE MAGNET WIRE RANGE : AWG#25.5 - #19  
(280 - 1300 CMA)
  4. TEST TAB INSERTION & WITHDRAWAL FORCE  
(MEASURED BY PUSH-PULL GAUGE : USED 0.8t UNPLATED TAB)

INSERTION FORCE	WITHDRAWAL FORCE	FINISH
INITIAL	INITIAL & 3th	
4.5 kgf MAX.	1.2kgf MIN.	TIN PLATED

5. INSULATION WIRE RANGE : TFS-19 ~ 21 TEFLON TUBING  
PER THE FOLLING CS-49749-001



PRELIMINARY REVISED ECN NO. KOR2007-0167 DRWN: JH.PARK 07/06/25 CHK: W.Y.YANG APPR: EHLJUNG	QUALITY SYMBOLS MAJOR $\blacktriangledown = 0$ CRITICAL $\blacktriangledown C = 0$	GENERAL TOLERANCES: (UNLESS SPECIFIED)		SCALE 6:1	DESIGN UNITS <input checked="" type="checkbox"/> MM <input type="checkbox"/> INCH	THIRD ANGLE PROJECTION <input type="checkbox"/> FIRST ANGLE <input checked="" type="checkbox"/> THIRD ANGLE	DIMENSIONS: <input type="checkbox"/> MM <input type="checkbox"/> INCH <input checked="" type="checkbox"/> MM ONLY	SHT REV
		4 PLACES $\pm 0.$ $\pm -$ 3 PLACES $\pm 0.$ $\pm -$ 2 PLACES $\pm 0.30$ $\pm -$ 1 PLACE $\pm 0.30$ $\pm -$	DRAWN BY & DATE C.B.CHIN 04/03/16 CHECKED BY & DATE W.Y.YANG 04/03/16 APPROVED BY & DATE C.W.LEE 04/03/16	TITLE: .187 RECEPTACLE TERMINAL (MAGNET WIRE)		CAD FILENAME S49749AA.MI		MATERIAL NO. 497499001
B	REV	DRAFT WHERE APPLICABLE MUST REMAIN WITHIN DIMENSIONS		THIS DRAWING CONTAINS INFORMATION THAT IS PROPRIETARY TO MOLEX INCORPORATED AND SHOULD NOT BE USED WITHOUT WRITTEN PERMISSION.				SIZE B