

# C&K DM Series Miniature Illuminated Power Rocker Switches



## Features/Benefits

- 3 AMPS to 10 AMPS
- Illuminated LED
- Positive detent
- Recessed bracket available—prevents accidental actuation

## Typical Applications

- Instrumentation
- Industrial
- Copy machines



## Specifications

CONTACT RATING: DM14 and DM24 Models: 3 AMPS @ 125 V AC; 2 AMPS @ 250 V AC. DM54 and DM64 Models: 10 AMPS @ 125 V AC; 5 AMPS @ 250 V AC (UL/CSA).

ELECTRICAL LIFE: 10,000 make-and-break cycles at full load.

INSULATION RESISTANCE:  $10^9 \Omega$  min.

DIELECTRIC STRENGTH: 1,000 Vrms min. @ sea level.

NOTE: Specification and materials listed above are for standard switches. For information on specific and custom switches, consult Customer Service Center.

## Materials

HOUSING: 6/6 nylon (UL94V-2), black.

ACTUATOR: 6/6 nylon (UL94V-2), black.

MOVABLE CONTACTS: DM14 and DM24 Models: Copper, silver plated. DM54 and DM64 Models: Coin silver, silver plated.

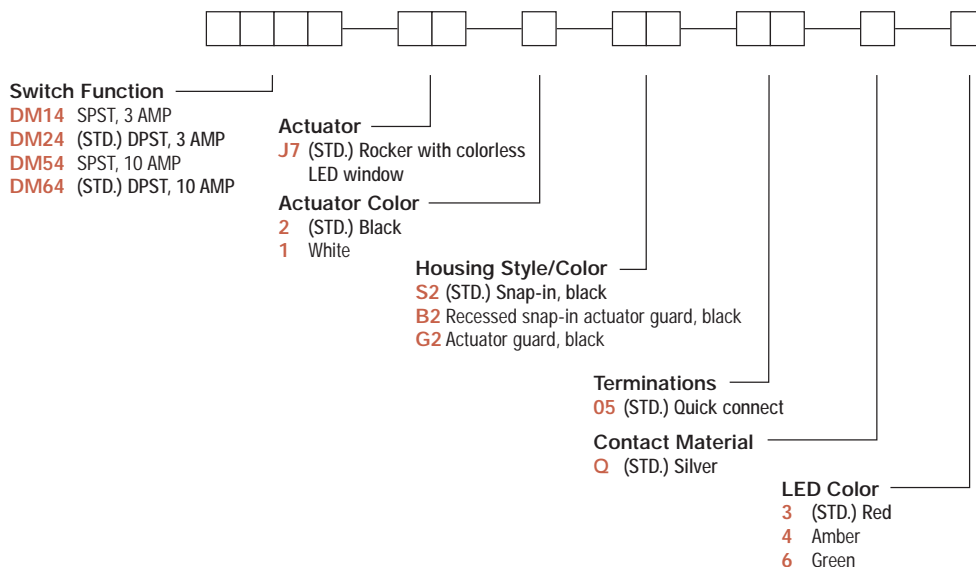
STATIONARY CONTACTS & TERMINALS: Copper or brass, silver plated.

LED TERMINALS: Brass, unplated.

CONTACT SPRING: Music wire or stainless steel.

## Build-A-Switch

To order, simply select desired option from each category and place in the appropriate box. Available options are shown and described on pages G-61 and G-62. For additional options not shown in catalog, consult Customer Service Center.



# C&K DM Series Miniature Illuminated Power Rocker Switches

## SWITCH FUNCTION

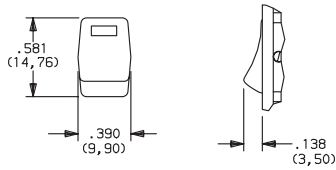
NO. POLES	MODEL NO.	AMP RATING*	SWITCH FUNCTION		CONNECTED TERMINALS		SCHEMATIC
			POS. 1	POS. 2	POS. 1	POS. 2	
SP	<b>DM14</b> <b>DM54</b>	3 10	ON	OFF	1-1A	OPEN	
DP	<b>DM24 (STD.)</b> <b>DM64 (STD.)</b>	3 10	ON	OFF	1-1A, 2-2A	OPEN	
<b>DPDT</b> <p>Actuator shown in pos. 1 - 'ON' position.</p> <p>Part number shown: DM24J72S205Q3</p> <p>TERM. NOS. FOR REFERENCE ONLY SPST models (DM14 &amp; DM54), omit terminals 2 and 2A.</p>							

\* RATINGS: DM14 and DM24 models: 3 AMPS @ 125 V AC; 2 AMPS @ 250 V AC. DM54 and DM64 models: 10 AMPS @ 125 V AC; 5 AMPS @ 250 V AC.

All models with all options.

## ACTUATOR

**J7** (STD.) ROCKER WITH COLORLESS LED WINDOW

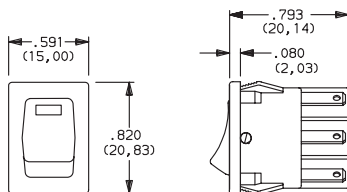


OPTION CODE	ACTUATOR COLOR
<b>2</b>	(STD.) BLACK
<b>1</b>	WHITE

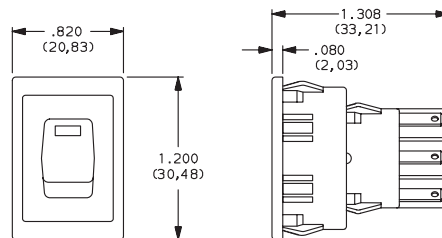
NOTE: Other colors available, consult Customer Service Center.

## HOUSING STYLE/COLOR

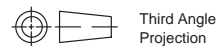
**S2** (STD.) SNAP-IN, BLACK



**B2** RECESSED SNAP-IN ACTUATOR GUARD, BLACK



NOTE: Housing finish: matte. Other colors available, consult Customer Service Center.



Dimensions are shown: IN (mm)  
Dimensions subject to change

Rocker

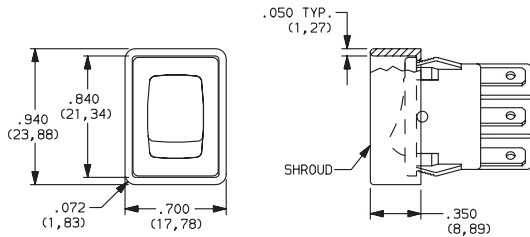
G

# C&K DM Series Miniature Illuminated Power Rocker Switches

## HOUSING STYLE/COLOR

**G2** ACTUATOR GUARD, BLACK

*New!*



### PANEL MOUNTING



'S2' & 'G2' housing style

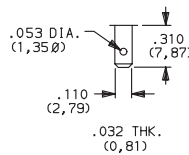
'B2' housing style

NOTE: Blank insert available for SP models only, see page G-63.

PANEL THK.	DIM 'A' 'S2' & 'G2' HOUSING STYLES	DIM 'A' 'B2' HOUSING STYLES
.030-.049 (0,75) (1,25)	.756 (19,20)	1.068 (27,13)
.049-.079 (1,25) (2,00)	.764 (19,40)	1.076 (27,33)
.079-.118 (2,00) (3,00)	.780 (19,80)	1.092 (27,74)

## TERMINATIONS

**05** (STD.) QUICK CONNECT



## CONTACT MATERIAL

OPTION CODE	CONTACT AND TERMINAL MATERIAL	RATINGS	
		POWER	
<b>Q</b> (STD.)	SILVER 1.2		DM14 and DM24 Models: 3 AMPS @ 125 V AC; 2 AMPS @ 250 V AC. DM54 and DM64 Models: 10 AMPS @ 125 V AC; 5 AMPS @ 250 V AC.

CONTACT MATERIAL/APPLICATION RECOMMENDATIONS - SEE SECTION N.

<sup>1</sup> MOVABLE CONTACTS: DM14 and DM24 models: Copper, silver plated.  
DM54 and DM64 models: Coin silver, silver plated.

All models with all options.

<sup>2</sup> STATIONARY CONTACTS & TERMINALS: Copper or brass, silver plated.

## LED COLOR

OPTION CODE	LED COLOR	FORWARD V <sub>FD</sub>	CURRENT I <sub>LED</sub>	REVERSE V <sub>R</sub>	INTENSITY M <sub>CD</sub>	RECOMMENDED RESISTOR @ VOLTAGE		
						5V	12V	24V
<b>3</b> (STD.)	Red	2.1	10	4V	1.6 typ.	270	1K	2.2K
<b>4</b>	Amber	2.2	20	4V	2.5 typ.	150	510	1.2K
<b>6</b>	Green	2.1	20	4V	2.0 typ.	150	510	1.2K



Dimensions are shown: IN (mm)  
Dimensions subject to change

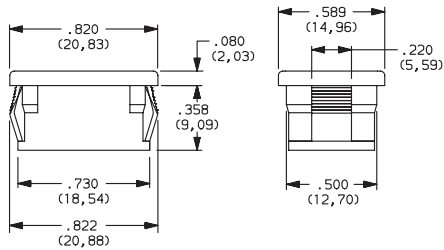
www.ittcannon.com



# C&K DM Series Miniature Illuminated Power Rocker Switches

## AVAILABLE HARDWARE

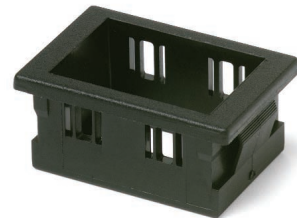
Blank Insert



PART NO.  
**057190200**

Material: Zinc nylon 6/6  
Finish: Matte

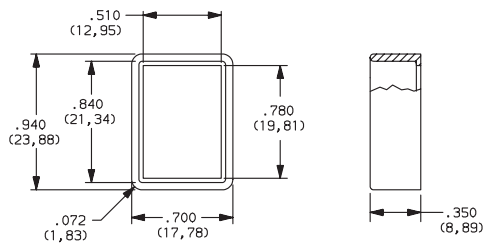
Recessed Bracket



PART NO.  
**057090100**

Material: 6/6 Nylon  
Finish: Matte

Actuator Guard



PART NO.  
**104C02000**

Material: PBT thermoplastic  
Finish: Matte

Rocker



G