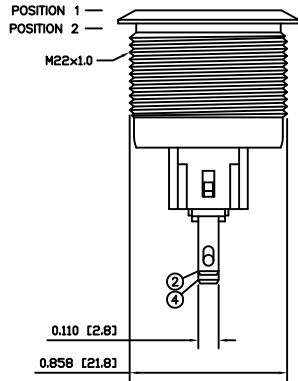
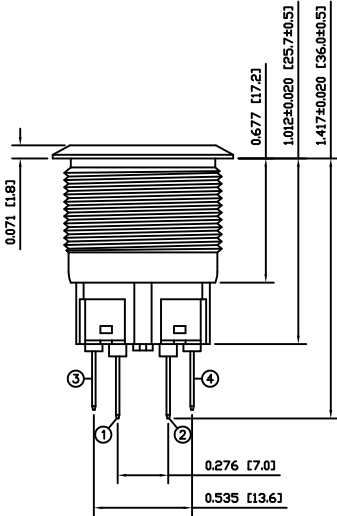
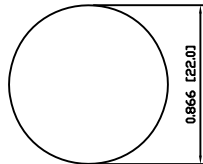


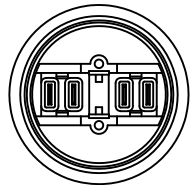
0.984 [25.0]  
0.709 [18.0]



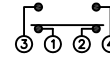
SUGGESTED PANEL CUTOUT



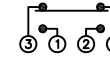
MAXIMUM PANEL THICKNESS: 0.315 [8.0mm]



SCHMATIC



POSITION 1  
(MAINTAINED)



POSITION 2  
(MOMENTARY)

SPECIFICATIONS

**FUNCTION:**  
1PNO OFF-(ON) + 1PNC ON-(OFF)

**RATING:**  
2A 48VDC

**CONTACT RESISTANCE:**  
Initial: 50mΩ Max. at 1A 12VDC

**INSULATION RESISTANCE:**  
1,000MΩ Min. at 500VDC

**DIELECTRIC STRENGTH:**  
2,000VAC Min. for 1 Minute

**ELECTRICAL LIFE:**  
50,000 Cycles

**MECHANICAL LIFE:**  
1,000,000 Cycles

**TEMPERATURE:**  
Operating: -20°C to 70°C

**INGRESS PROTECTION:**  
IP65

**APPROVALS:**  
**RoHS**  
COMPLIANT

MATERIALS

**BUSHING:**  
Stainless Steel (304)

**BASE:**  
Polyamide 6/6 (PA66)

**ACTUATOR:**  
Stainless Steel (304)

**HARDWARE:**  
Nickel Plated Brass (H59)

**SEALING:**  
Silicone Rubber

**INNER ASSEMBLY:**  
Polycarbonate (PC)  
Polyoxymethylene (POM)  
Brass (H62)  
Stainless Steel (304)

**SPRING:**  
Stainless Steel (304)

**CONTACTS:**  
Silver/Cadmium Oxide (AgCdO)

**TERMINALS:**  
Brass (H62)

**O-RING:**  
Silicone Rubber

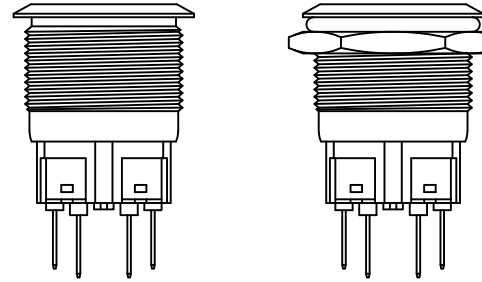
COLORS AND FINISH

**BEZEL:**  
Stainless Steel  
Machine Finish

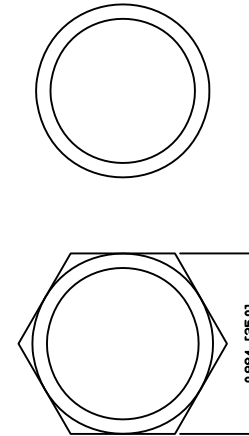
**ACTUATOR:**  
Stainless Steel  
Machine Finish

**ILLUMINATION:**  
None

**MARKING:**  
Horn Symbol (M04)



EXPLODED VIEW



ASSEMBLED VIEW

BODY	A	09/07/22	CAB
COLORS	A	10/04/08	CAB
MATERIALS	B	09/12/02	CAB
SPECIFICATIONS	B	09/12/29	CAB
REFERENCE	REV.	DATE	BY

THE INFORMATION CONTAINED IN THIS DOCUMENT IS PROPRIETARY TO E-SWITCH AND IS NOT TO BE COPIED OR TRANSFERRED

A	INITIAL RELEASE	19017	10/04/15	CAB
REV.	DESCRIPTION	PCR	DATE	DRAWN BY

DIMENSIONS	INCHES [MILLIMETERS]
GENERAL TOLERANCES	±0.008 [±0.2] / ±1°
SCALE	DRAWING NOT TO SCALE
PROJECTION	1ST ANGLE

TITLE		
PV7F2Y0MM-M04		
ITEM NUMBER	DATE	REVISION
52-PV7F2Y0MM04	APRIL 15, 2010	A