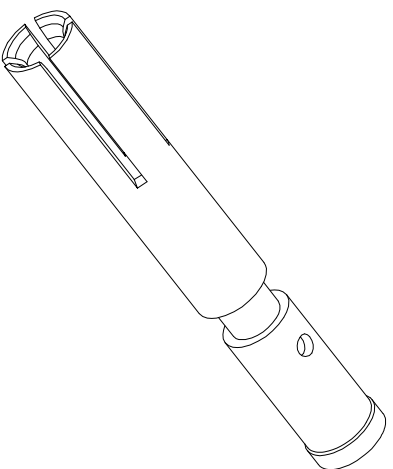
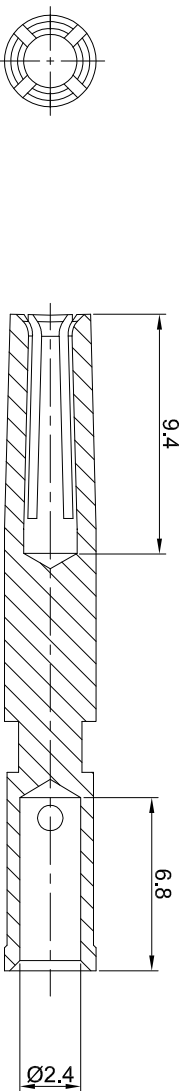
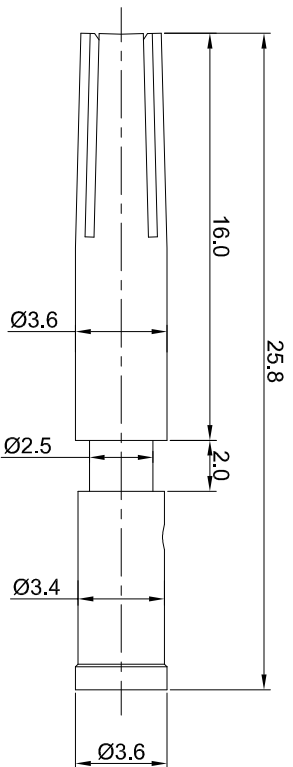


REVISIONS				
REV	ECO	DESCRIPTION	DATE	BY APPR
A1	-	RELEASED DRAWING	Jun.05.2018	White TOMMY



- NOTES: UNLESS OTHERWISE SPECIFIED
1. MATERIAL: COPPER ALLOY, GOLD PLATED
 2. SPECIFICATIONS:
 - 2.1 RATED CURRENT: 30 AMPS
 - 2.2 CONTACT RESISTANCE: <3 milliohm
 - 2.3 AVAILABLE WIRE RANGE: 14AWG~18AWG
 - 2.4 ROHS COMPLIANT
 3. ALL DIMENSIONS ARE FOR REFERENCE USE ONLY.

TITLE:

Socket contact 2.0mm Crimp 14~18AWG

DWG NO: SC000462

REV: A1

SH: 1

OF: 1

QUANTITY	SEE PART NUMBER CHART	PART NUMBER	DESCRIPTION	ITEM
1				

MATERIALS LIST

UNLESS OTHERWISE SPECIFIED	SIGNATURES	DATE
1) All dimensions are in millimeters. 2) Tolerances are as follows: 2 PL DEC 2015 ±.15 3 PL DEC 2015 ±.10 3) Note reference =	DRAWN: White CHECKED: Tod ENGINEER:	JUN.05.2018 JUN.05.2018
MATERIAL SPECIFICATIONS:	CUSTOMER: Tommy	APPROVAL: JUN.05.2018

PROCESS SPECIFICATIONS:	THIS DRAWING IS SUPERSEDED FOR INFORMATION ONLY. DESIGN FEATURES, SPECIFICATIONS AND PERFORMANCE DATA ARE THE PROPERTY OF AMPHENOL CORPORATION. NO RIGHTS OR PERMISSIONS ARE GRANTED FOR REPRODUCTION OR TRANSMISSION IN ANY FORM OR BY ANY MEANS, ELECTRONIC OR MECHANICAL, INCLUDING PHOTOCOPYING, RECORDING, OR BY ANY INFORMATION STORAGE AND RETRIEVAL SYSTEMS. DIMENSIONS ARE SHOWN UNLESS OTHERWISE SPECIFIED.	SCALE:	SIZE:	TYPE:	DWG NO:	REVISION:
NEET ASSTY:		NONE	B	C-	SC000462	A1

Socket contact 2.0mm Crimp 14~18AWG

Amphenol

Site Systems - www.amphenol-site.com
44724 Morley Drive
Clinton Township, MI 48036