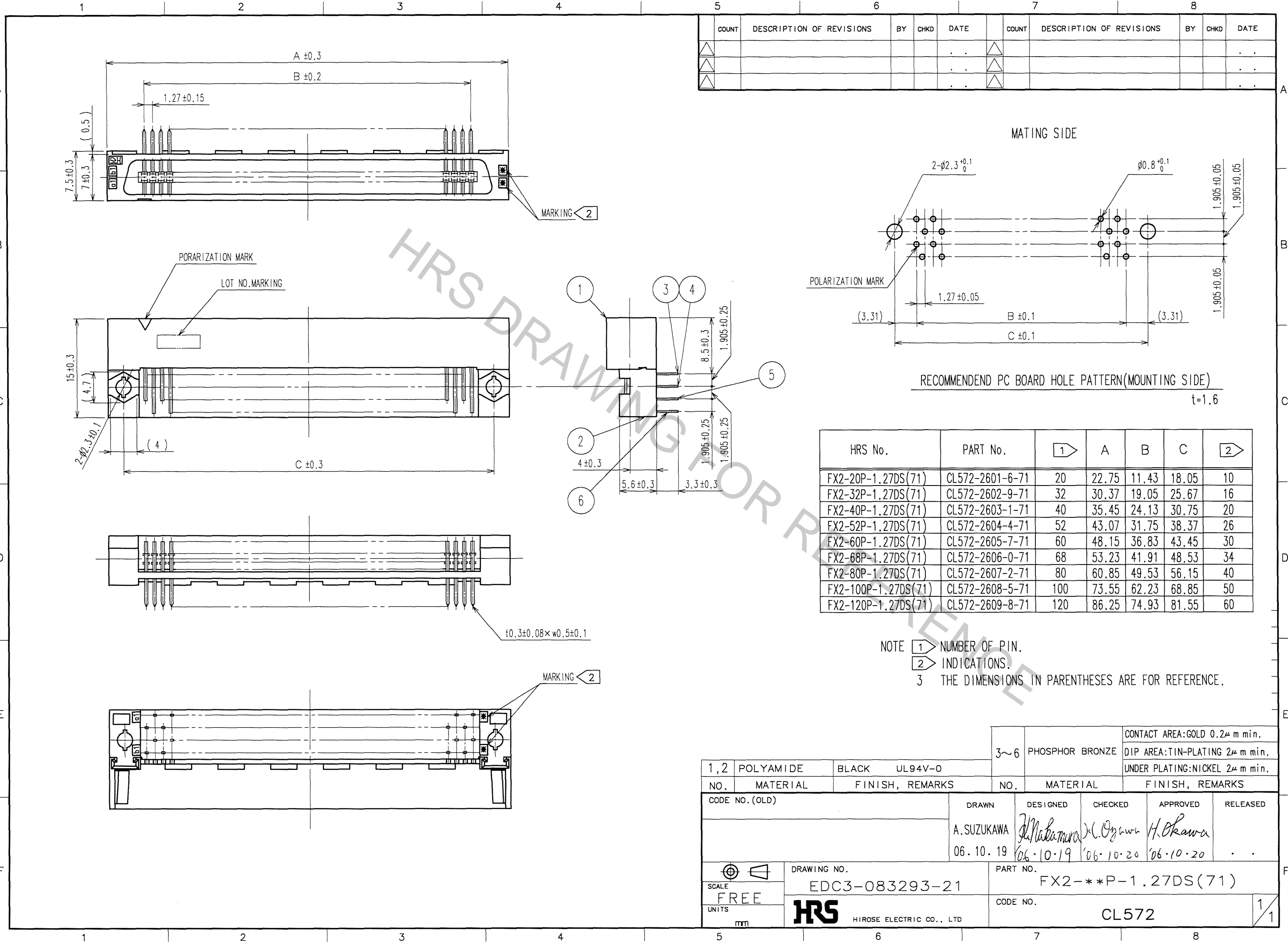


Apr.1.2017 Copyright 2017 HIROSE ELECTRIC CO., LTD. All Rights Reserved.



COUNT	DESCRIPTION OF REVISIONS	BY	CHKD	DATE	COUNT	DESCRIPTION OF REVISIONS	BY	CHKD	DATE

HRS No.	PART No.	1	A	B	C	2
FX2-20P-1.27DS(71)	CL572-2601-6-71	20	22.75	11.43	18.05	10
FX2-32P-1.27DS(71)	CL572-2602-9-71	32	30.37	19.05	25.67	16
FX2-40P-1.27DS(71)	CL572-2603-1-71	40	35.45	24.13	30.75	20
FX2-52P-1.27DS(71)	CL572-2604-4-71	52	43.07	31.75	38.37	26
FX2-60P-1.27DS(71)	CL572-2605-7-71	60	48.15	36.83	43.45	30
FX2-68P-1.27DS(71)	CL572-2606-0-71	68	53.23	41.91	48.53	34
FX2-80P-1.27DS(71)	CL572-2607-2-71	80	60.85	49.53	56.15	40
FX2-100P-1.27DS(71)	CL572-2608-5-71	100	73.55	62.23	68.85	50
FX2-120P-1.27DS(71)	CL572-2609-8-71	120	86.25	74.93	81.55	60

NOTE 1 NUMBER OF PIN.  
 2 INDICATIONS.  
 3 THE DIMENSIONS IN PARENTHESES ARE FOR REFERENCE.

1, 2	POLYAMIDE	BLACK	UL94V-0	3~6	PHOSPHOR BRONZE	CONTACT AREA: GOLD 0.2μ m min. DIP AREA: TIN-PLATING 2μ m min. UNDER PLATING: NICKEL 2μ m min.
NO.	MATERIAL	FINISH, REMARKS		NO.	MATERIAL	FINISH, REMARKS
CODE NO. (OLD)				DRAWN	DESIGNED	CHECKED
				A. SUZUKAWA	<i>M. Nabamura</i>	<i>K. Ogawa</i>
				06.10.19	06.10.19	06.10.20
					<i>H. Okawa</i>	
DRAWING NO.				PART NO.		
EDC3-083293-21				FX2-***P-1.27DS(71)		
SCALE				CODE NO.		
FREE				CL572		
UNITS						
mm						

TO  
PCK

1/1