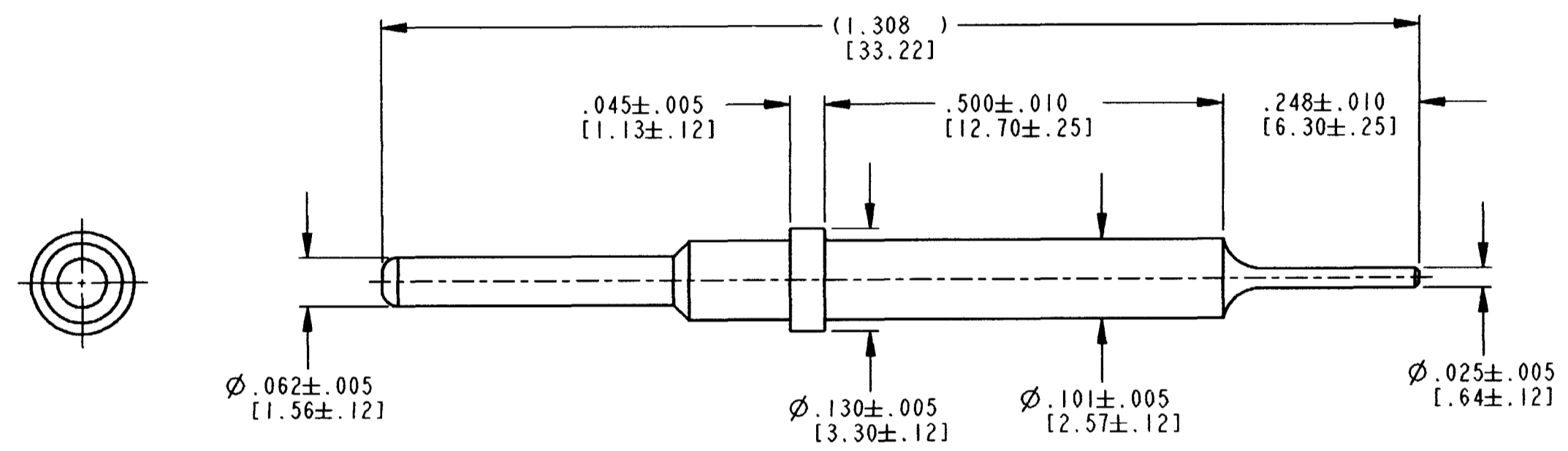


REV  
NC 0460-229-16\*\*

REVISIONS			
SYM	DESCRIPTION	DATE	APPROVED
NC	NEW RELEASE PER E.O. PI9398	11-17-06	ROR



- NOTES:
1. DIMENSIONS ARE IN INCHES [mm].
  2. WHEN \*\* = 141: PLATING IS NICKEL.
  3. FOR CONTACT APPLICATION, SEE DRAWING 0425-202-0000.

SIGNATURE & DATE	
DR	J. APOSTOL 24OCT2006
CHK	[Signature] 11/2/06
PE	D. Meyer 11/21/06
APPD	R. Reed 11-17-06
SCALE	NONE WT

CONTACT PIN  
SIZE 16  
EXTENSION

ENVELOPE

EP	MATL. CODE
<b>The Deutch Company</b> DEUTSCH I.P.D. 3850 INDUSTRIAL AVE. HEMET, CALIF. 92545	
<b>B</b>	<b>0460-229-16**</b>
DWG SIZE	CODE 11139 SHEET 1 OF 1