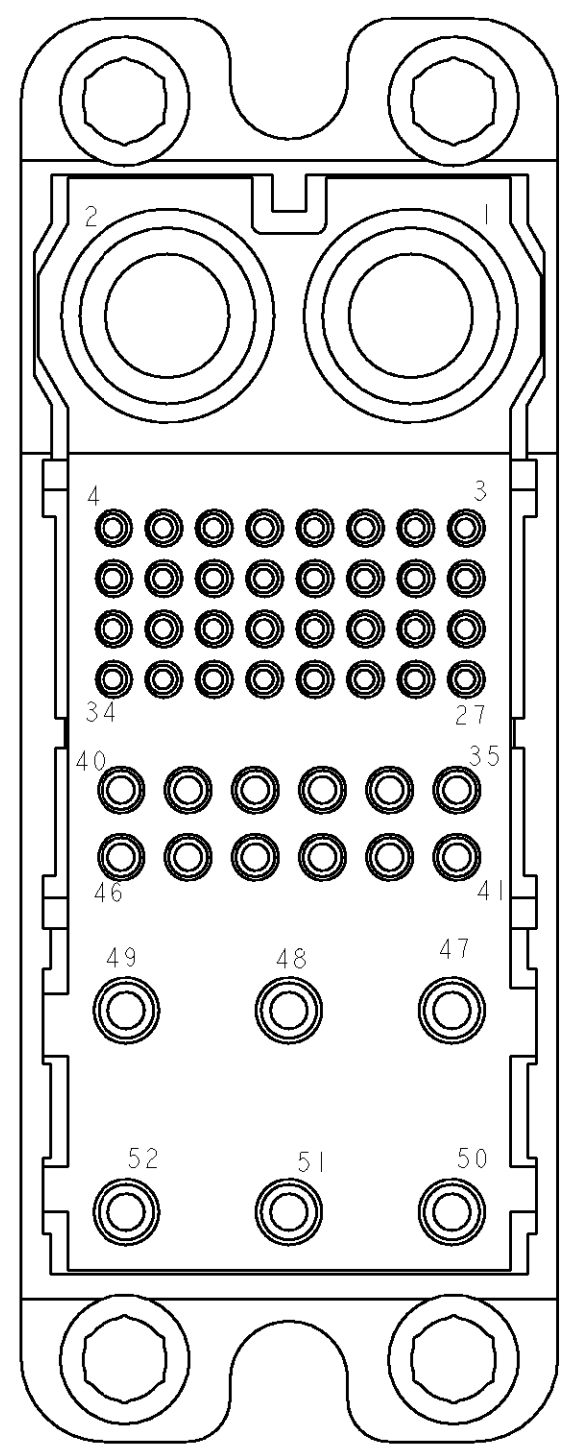
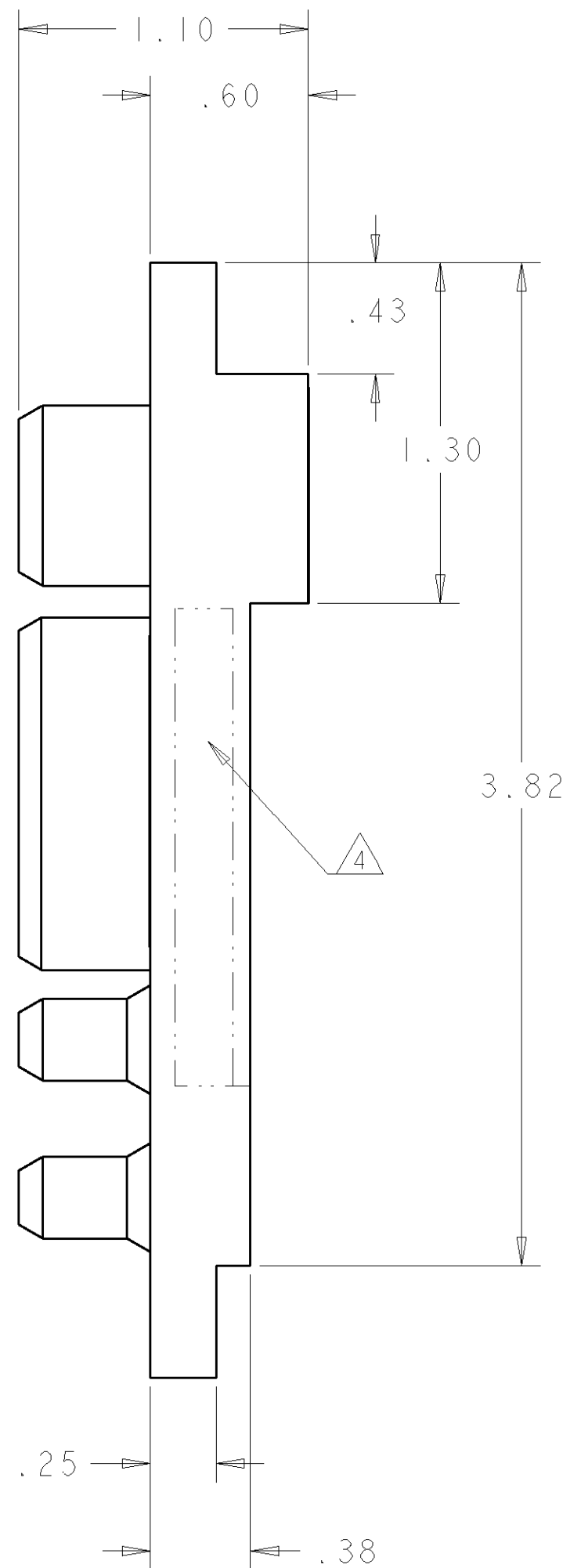
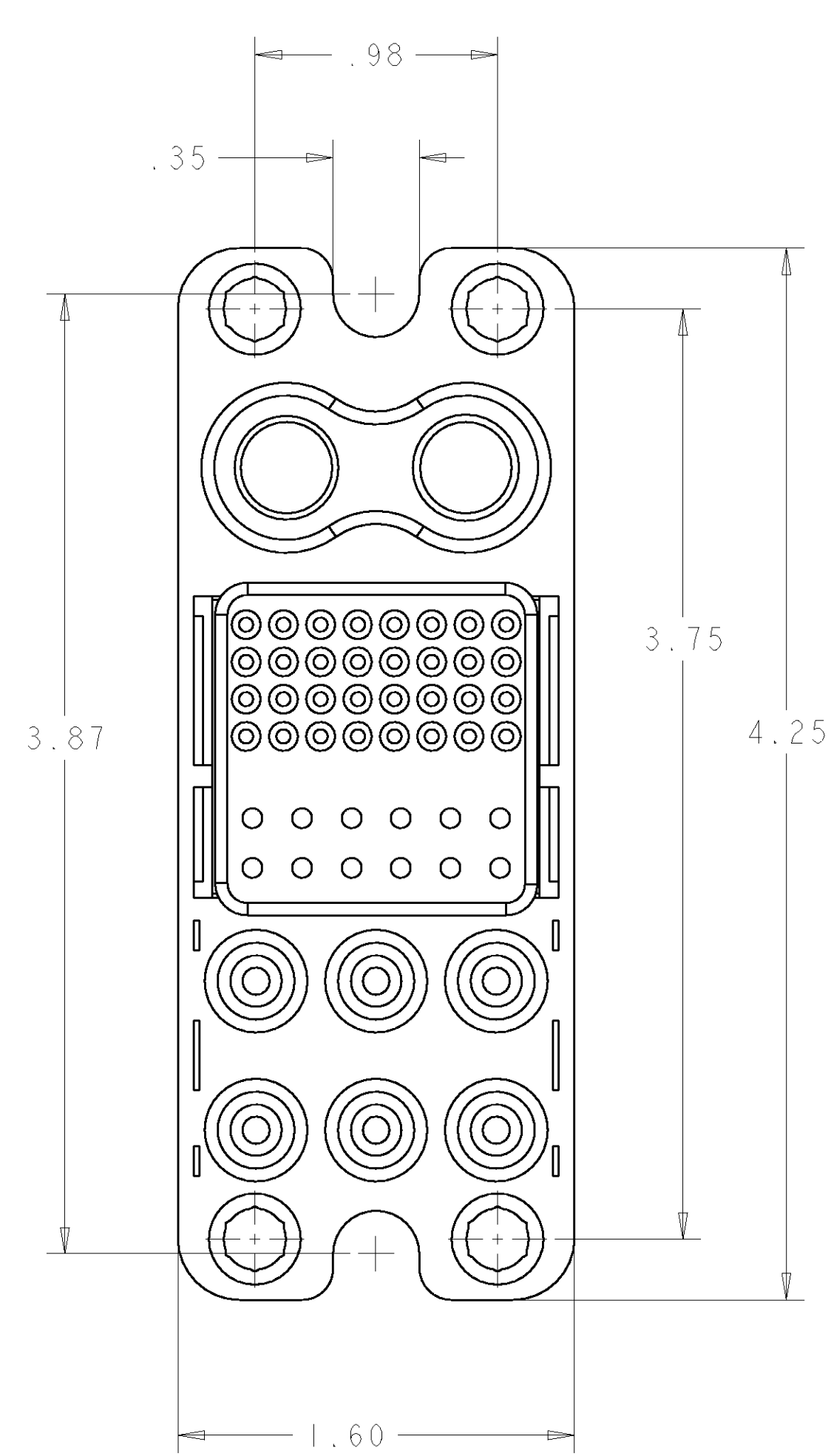


THIS DRAWING IS UNPUBLISHED. RELEASED FOR PUBLICATION 20  
 © COPYRIGHT 20 BY TYCO ELECTRONICS CORPORATION. ALL RIGHTS RESERVED.

LOC	DIST	REVISIONS					
GP	00	P	LTR	DESCRIPTION	DATE	DWN	APVD
		A		RELEASED	27JULY06	RG	DO



REAR VIEW

- SOCKET CONTACTS SIZE #0
- SOCKET CONTACTS SIZE #20 (B)
- SOCKET CONTACTS SIZE #16 (C)
- SOCKET CONTACTS SIZE #12 (D)

5	E	2	1650401-1	SHOULDER SCREW, M5 X 0.8 THD
5	D	6	6648318-1	CONTACT, SOCKET, #12, CRIMP
5	C	12	6648319-1	CONTACT, SOCKET, #16, CRIMP
5	B	32	1648325-1	CONTACT, SOCKET, #20, CRIMP
	A	1	1648186-2	CONNECTOR, SOCKET
	ITEM	-2	PART NUMBER	DESCRIPTION

**ELCON TOP DRAWER**

THIS DRAWING IS A CONTROLLED DOCUMENT FOR TYCO ELECTRONICS CORPORATION. IT IS SUBJECT TO CHANGE AND THE CONTROLLING ENGINEERING ORGANIZATION SHOULD BE CONTACTED FOR THE LATEST REVISION.

DWN	R. GRZYBOWSKI	27JULY06	Tyco Electronics Harrisburg, PA 17105-3608
CHK	D. ORRIS	27JULY06	
APVD	S. FLICKINGER	27JULY06	
NAME	TOP DRAWER SOCKET HOUSING ASSEMBLY		
DIMENSIONS:	INCHES 0 PLC ± 1 PLC ± 2 PLC ±.02 3 PLC ±.010 4 PLC ± ANGLES ±.5 FINISH		PRODUCT SPEC APPLICATION SPEC WEIGHT CUSTOMER DRAWING
MATERIAL			SIZE CAGE CODE DRAWING NO RESTRICTED TO
			A200779C-6651487 SCALE 2:1 SHEET 1 OF 2 REV A

