



BE SERIES

DUAL-FUSE IEC INLET FILTERS



INTRODUCTIONS

1. Applications for UL 544 & UL 2601 health care equipment.
2. Designed as a general purpose filter with a switch effective EMI suppresion for both common and differential mode noise.
3. Bleeder resistor is added with suffix "-R".

COMPONENTS

PART NO.	Cx (uF)	L (mH)
02BEEG3FM	0.1	4.0
04BEEG3FM		1.8
06BEEG3FM		0.8

MINIMUM INSERTION LOSS IN dB

COMMON MODE (L-G) IN 50 OHM SYSTEM						
CURRENT RATING	FREQUENCY-MHz					
	.15	.50	1.0	5.0	10	30
2A	20	30	30	25	20	8
4A	15	25	25	25	20	10
6A	10	15	20	20	20	15
DIFFERENTIAL MODE (L-L) IN 50 OHM SYSTEM						
2A	5	15	25	40	45	30
4A	5	10	21	40	40	35
6A	4	10	15	35	30	35

MECHANICAL CONSTRUCTION



BEEG3FM

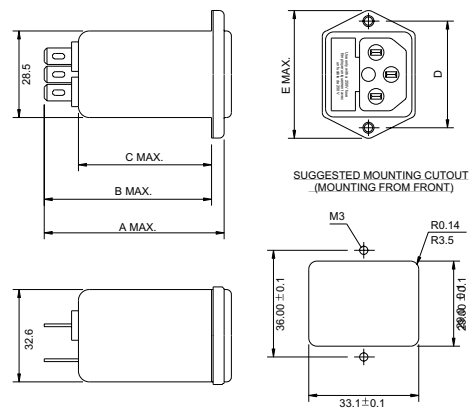
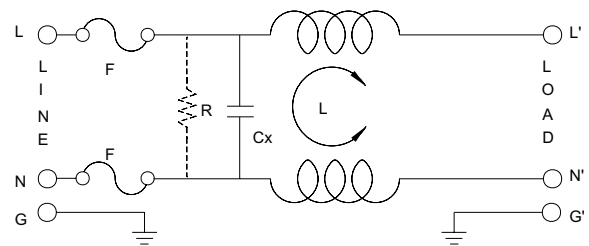
SPECIFICATIONS

1. Maximum leakage current each line-to-ground @ 115VAC 60Hz: 2uA @ 250VAC 50Hz: 5uA
2. Hipot rating (one minute) line-to-ground: 2250VDC line-to-line: 1450VDC
3. Operating frequency: 50/60Hz
4. Rated voltage: 115/250VAC

SERIES DIMENSIONS

DELTA PART NO.	STYLE	DIMENSIONS IN INCHES/mm				
		A	B	C	D	E
02BEEG3FM	EG3FM					
04BEEG3FM	EG3FM	2.25 57.0	2.09 53.0	1.66 42.0	1.42 36.0	1.74 44.0
06BEEG3FM	EG3FM					

ELECTRICAL SCHEMATIC



UNIT: INCH
mm