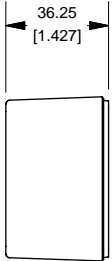


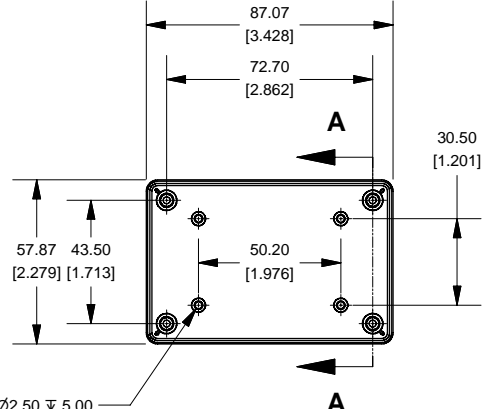
# 1591XXLS Enclosure

B

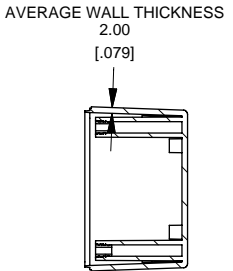
B



**SIDE VIEW OF BOX**



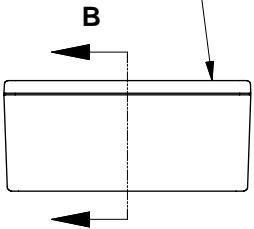
**TOP VIEW OF BOX**



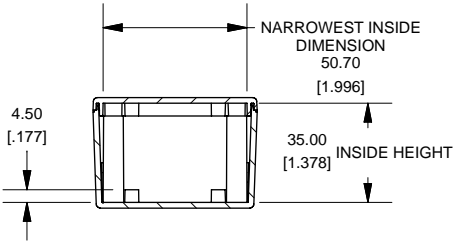
**SECTION A-A**



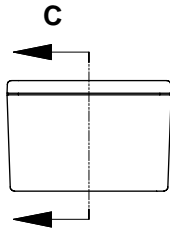
Cover Screws #4 x 1/2" Self-Tapping Screws



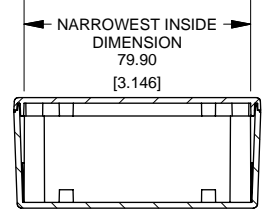
**SIDE VIEW OF ENCLOSURE**



**SECTION B-B**



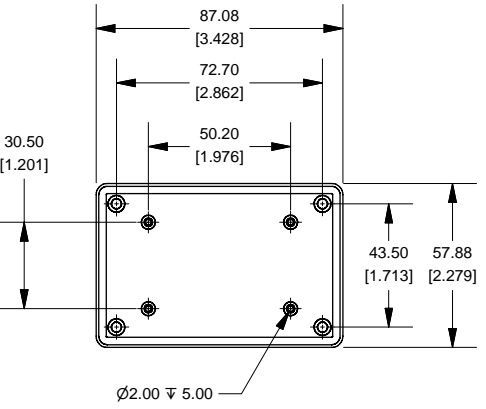
**C**



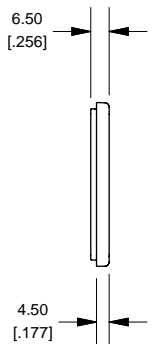
**SECTION C-C**

A

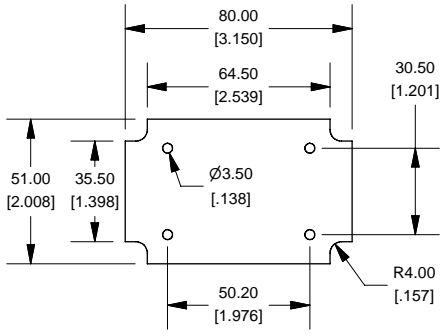
A



**BOTTOM VIEW OF LID**



**SIDE VIEW OF LID**



Max Size PCB. Fits in Box or in Lid.  
Not supplied with Enclosure

**Note:**

Enclosures available modified, Milling, Drilling, Silk Screening.  
Solid models of this enclosure available in STEP or IGES.  
Contact Factory [mjm@hammondmfg.com](mailto:mjm@hammondmfg.com)

NOTE	
Enclosure molded from GPABS UL-94HB plastic	
Other materials / colours available. Consult factory.	

1591XXLS	
1591XXLS Enclosure	
Black - RAL 7011	1591XXLSBK
ACCESSORIES	
Black Cover Screws	1591TS100BK
PCB Screws	1593ATS50 (pkg 50)
[ #4 x 1/4" self-tapping (6.4mm) ]	1593ATS100 (pkg 100)



2

1