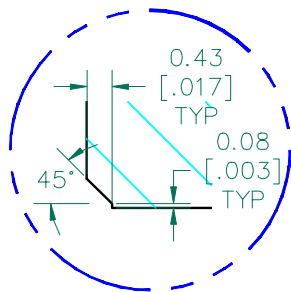


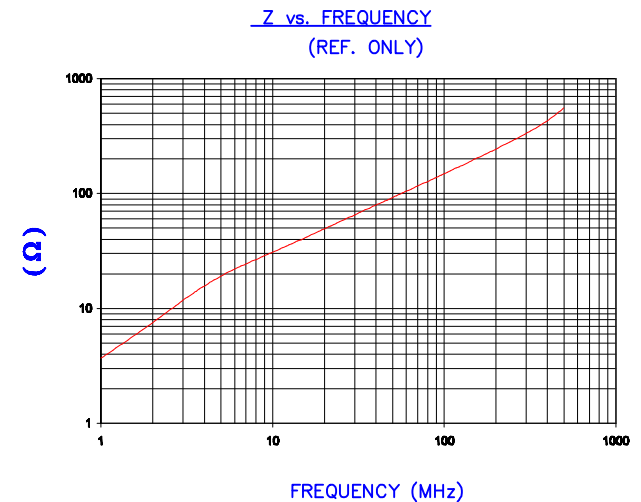
DETAIL A



DETAIL A  
SCALE 8:1

**UNCONTROLLED  
DOCUMENT**

IMPEDANCE ( Z )			
Frequency	25 MHz	100 MHz	300 MHz
Nominal (REF)	62 Ω	154 Ω	323 Ω
Minimum	- Ω	123 Ω	- Ω

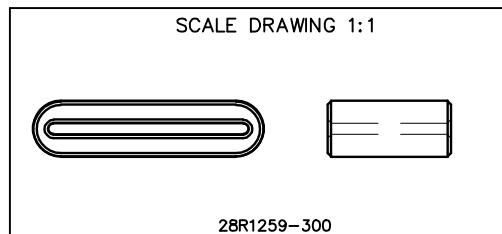


AGILENT E4991A Impedance/Material Analyzer  
HP 16092A Test Fixture, REF # 3032

FERRITE CORE DIMENSIONS (SPEC): mm[Inches]

A	32.00 [1.260]	+	0.50 [.020]
B	27.80 [1.094]	+	0.50 [.020]
C	17.00 [.669]	+	1.00 [.039]
D	7.75 [.305]	+	0.50 [.020]
E	1.50 [.060]	+	0.50 [.020]

WEIGHT/1000 16.09 kgs [35.47 Lbs]



DIMENSIONS ARE IN mm[INCHES].

REV	DESCRIPTION	DATE	INT
F	UPDATE MIN Z SPECS & COMPANY LOGO	07/30/07	TMB
E	UPDATE MIN Z SPEC@100 Mhz, ADD REF #	02/04/04	JRK
D	UPDATE FORMAT CURVE & Z SPECS	05/06/03	JRK
C	UPDATE TO CNZ FORMAT, ADD Z CURVE	07/08/02	JRK
B	UPDATE PRINT FOR ELECTRONIC DATABASE COR. DETAIL "A"	11/22/00	IAJ
A	ORIGINAL DRAFT	05/26/99	BAC

THIS DOCUMENT CONTAINS INFORMATION WHICH IS PROPRIETARY AND CONFIDENTIAL TO STEWARD. NO PRODUCTION OR PUBLICATION OF THIS DOCUMENT IN WHOLE OR IN PART SHALL BE MADE WITHOUT WRITTEN AUTHORIZATION FROM STEWARD.

**Steward** | **Laird**

PROJECT/PART NUMBER:	REV	PART TYPE:	DRAWN BY:
28R1259-300	F	FERRITE RIBBON CORE	BAC
DATE:	SCALE:	MATERIAL:	
05/26/99	3 : 1	NiZn Ferrite	
GAD #	TOOL #		
28R1259-300-F	R1259		