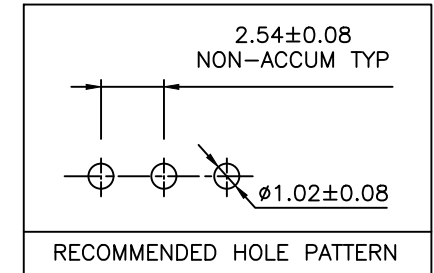
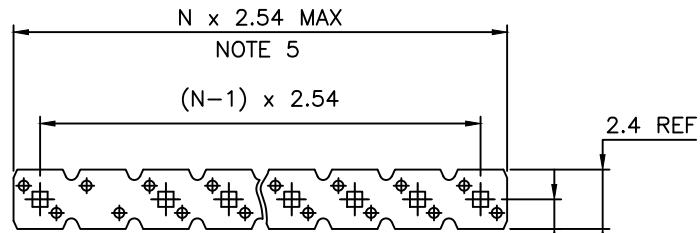


PRODUCT NUMBER

77312-YXX-LF

- RoHS COMPATIBLE
SEE NOTE 7
- PACKAGING SEE NOTE 8
- PIN STYLE
- PLATING SEE SHEET 2



NOTES:

1. HOUSING MAT'L : HIGH TEMPERATURE THERMOPLASTIC. UL94V-0 COLOR: BLACK
2. PIN MATERIAL : PHOSPHOR BRONZE
3. PRODUCT PACKAGED IN POLY BAGS.
4. 9N MIN RETENTION IN EITHER DIRECTION
5. TO DETERMINE DIMENSIONS :
N = NUMBER OF POSITIONS PER ROW
EXAMPLE : 8 POS N x 2.54 = 20.32mm
6. UNDERPLATING : 1.27µm Ni MIN
7. RoHS COMPATIBLE PRODUCT SPECIFICATIONS

a - PLATING:

- "LF" MEANS THE PRODUCT IS LEAD-FREE, 2µm MINIMUM MATTE TIN OVER 1.27µm MINIMUM NICKEL UNDERPLATE.

b - MANUFACTURING PROCESS COMPATIBILITY

- THE HOUSING WILL WITHSTAND EXPOSURE TO 260°C ±5°C SOLDER BATH TEMPERATURE FOR 5 SECONDS IN A WAVE SOLDER APPLICATION WITH A 1.6mm MIN THICK CIRCUIT BOARD.

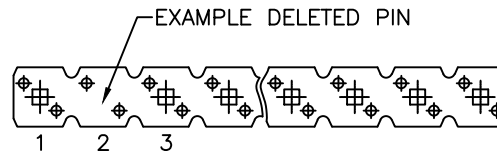
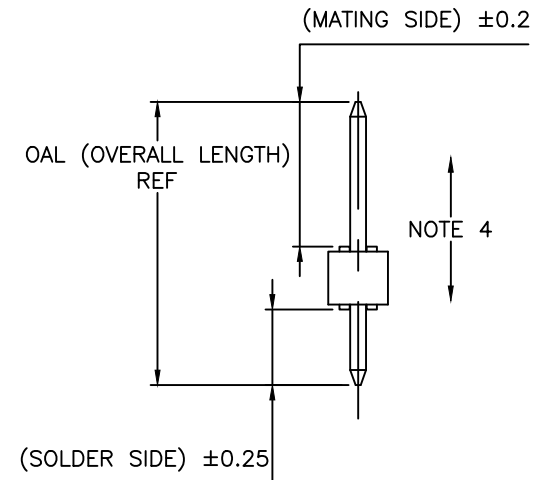
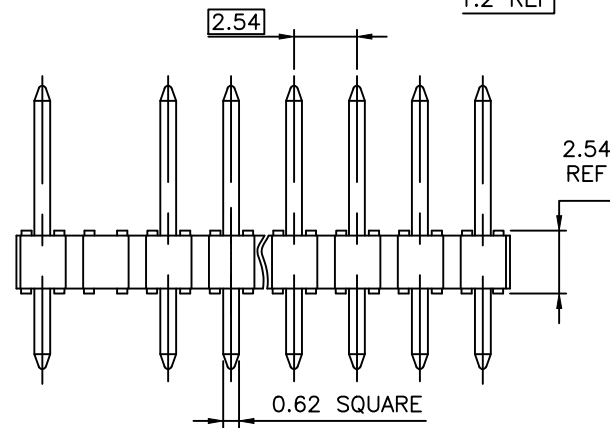
c - LABELING:

- MEETS PACKAGING SPECS AS PER GS-14-920

d - LEGAL STATEMENT: SEE GS-47-0004

8. PACKAGING

- BLANK = POLYBAGS
- KV = TAPE&REEL PACKAGING WITHOUT PICK UP CAP FOR CUSTOMER DEDICATED PART. ONLY P/N 77312-496KVLF

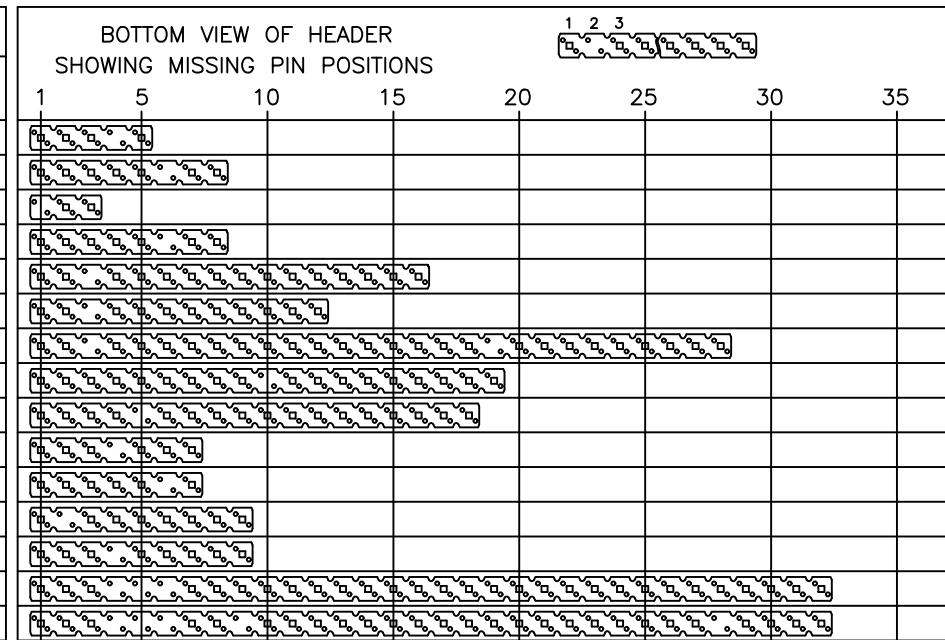


BOTTOM VIEW

PRELIMINARY

mat'l. code SEE NOTES		surface ISO 1302 ✓		tolerance ISO 406 ISO 1101		projection mm		product family BSTIK	
ltr ecn no dr date		tolerances unless otherwise specified		angles Linear		scale 5:1		title HEADER SR,STR, POL,DUPLEX,2.54mm	
AR F-24825 AMA 16.08.26		AS F-25332 DDE 16.11.15		AT F-25396 LMU 16.11.21		AU F-28244 DDE 17.09.20		dr COMPAGNON J 95.10.27	
AN B-21118 LMU 15.06.10		AP F-24327 AMA 16.06.17		enrg JMC		chr JMC		95.10.27	
sheet index		revision		AU T N Y H		1 2 3 4 5		dwg no 77312 sheet 1 of 5 size A3	
								type CUSTOMER Drawing	

PIN STYLE	PRODUCT DEFINITION			
	NB OF POS	MATING SIDE	SOLDER SIDE	("OAL") REF
01	1x5	5.84	3.42	11.8
02	1x8	5.84	3.42	11.8
03	1x3	5.84	3.42	11.8
04	1x8	5.72	2.54	10.8
05	1x16	5.72	2.54	10.8
06	1x12	5.72	2.54	10.8
07	1x28	5.84	3.42	11.8
15	1x19	5.84	3.42	11.8
16	1x18	5.84	3.42	11.8
17	1x7	5.84	3.42	11.8
18	1x7	5.84	3.42	11.8
19	1x9	5.84	3.42	11.8
20	1x9	5.84	3.42	11.8
21	1x32	5.84	3.42	11.8
22	1x32	5.84	3.42	11.8



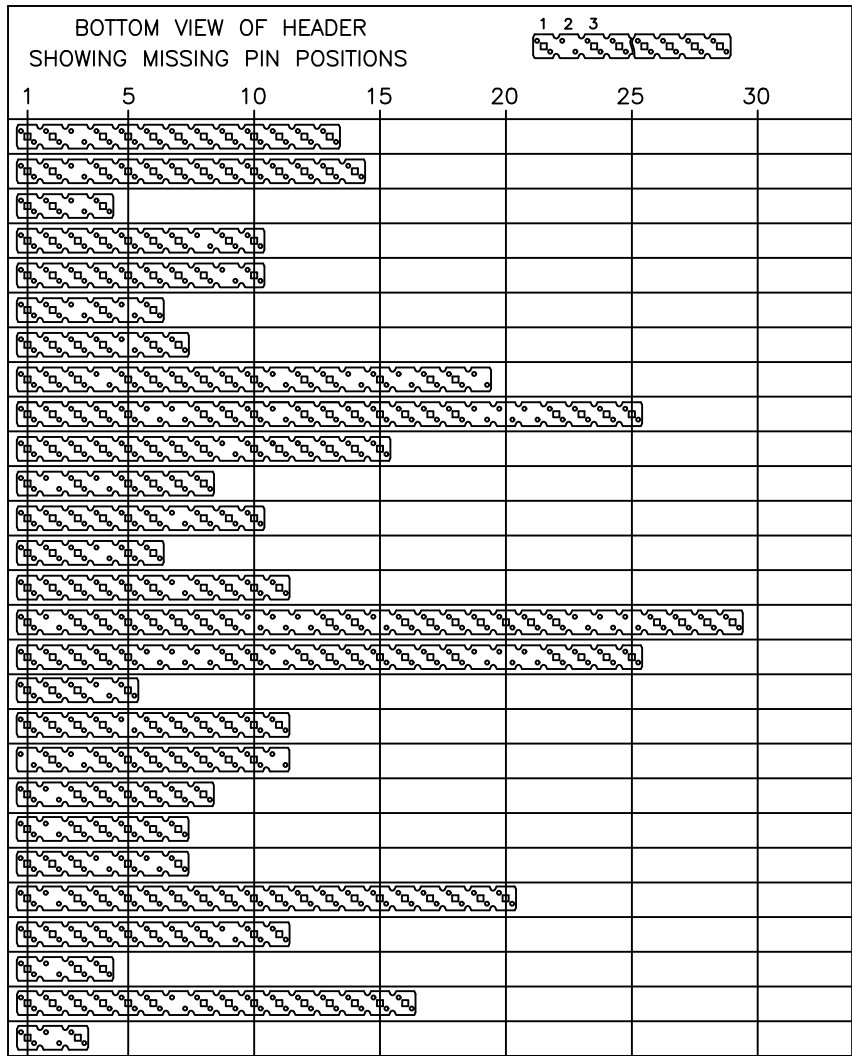
77312-GXXLF	0.76μm FULL GXT	
77312-SXXLF	0.38μm FULL GXT	
77312-8XXLF	0.38μm Au/GXT	2.0-7.5μm Sn MATTE
77312-5XXLF	0.25μm Au/GXT	2.0-7.5μm Sn MATTE
77312-4XXLF	2.0-7.5μm FULL MATTE TIN	
77312-2XXLF	1.27μm Au	2.0-7.5μm Sn MATTE
77312-1XXLF	0.76μm Au/GXT	2.0-7.5μm Sn MATTE
77312-1XXSLF	0.76μm Au/GXT	GOLD FLASH
PLATING CODE	CONTACT AREA	REMAINDER
	PLATING THICKNESS OVER 1.27μm Ni	

mat'l. code		surface		tolerance		projection		product family	
		ISO 1302		ISO 406 ISO 1101				BSTIK	
ltr		ecn no		dr		date		title	
S		B-18917		LMU		14.09.26		HEADER,SR,STR,	
T		B-21118		LMU		15.06.10		POL,DUPLX,2.54mm	
		angles		linear		mm		scale 1:1	
M		F10707		LMU		01.11.28		dr COMPAGNON J	
N		F06-0196		LMU		06.06.20		enr JMC	
P		F08-0148		RTR		08.03.31		chr	
R		B-17773		LMU		14.05.26		appd JMC	
sheet		revision							
index		sheet							



Copyright FCI

PIN STYLE	PRODUCT DEFINITION			
	NB OF POS	MATING SIDE	SOLDER SIDE	("OAL") REF
23	1x 13	5.84	3.42	11.8
24	1x 14	5.84	3.42	11.8
25	1x 4	5.84	3.42	11.8
26	1x 10	5.84	3.42	11.8
27	1x 10	5.84	3.42	11.8
28	1x 6	5.72	2.54	10.8
29	1x 7	5.84	3.42	11.8
30	1x 19	5.84	3.42	11.8
31	1x 25	5.84	3.42	11.8
32	1x 15	5.84	3.42	11.8
33	1x 8	5.84	3.42	11.8
34	1x 10	5.84	3.42	11.8
35	1x 6	5.84	3.42	11.8
36	1x 11	5.84	3.42	11.8
37	1x 29	5.84	3.42	11.8
38	1x 25	5.84	3.42	11.8
39	1x 5	5.72	2.54	10.8
40	1x 11	5.72	3.05	11.3
41	1x 11	5.72	3.05	11.3
42	1x 8	7.75	3.06	13.35
43	1x 7	5.84	3.42	11.8
44	1x 7	5.72	2.54	10.8
45	1x 20	5.72	7.64	15.9
46	1x 11	5.72	3.05	11.3
48	1x 4	5.72	3.05	11.3
49	1x 16	5.72	7.64	15.9
50	1x 3	5.72	3.05	11.3

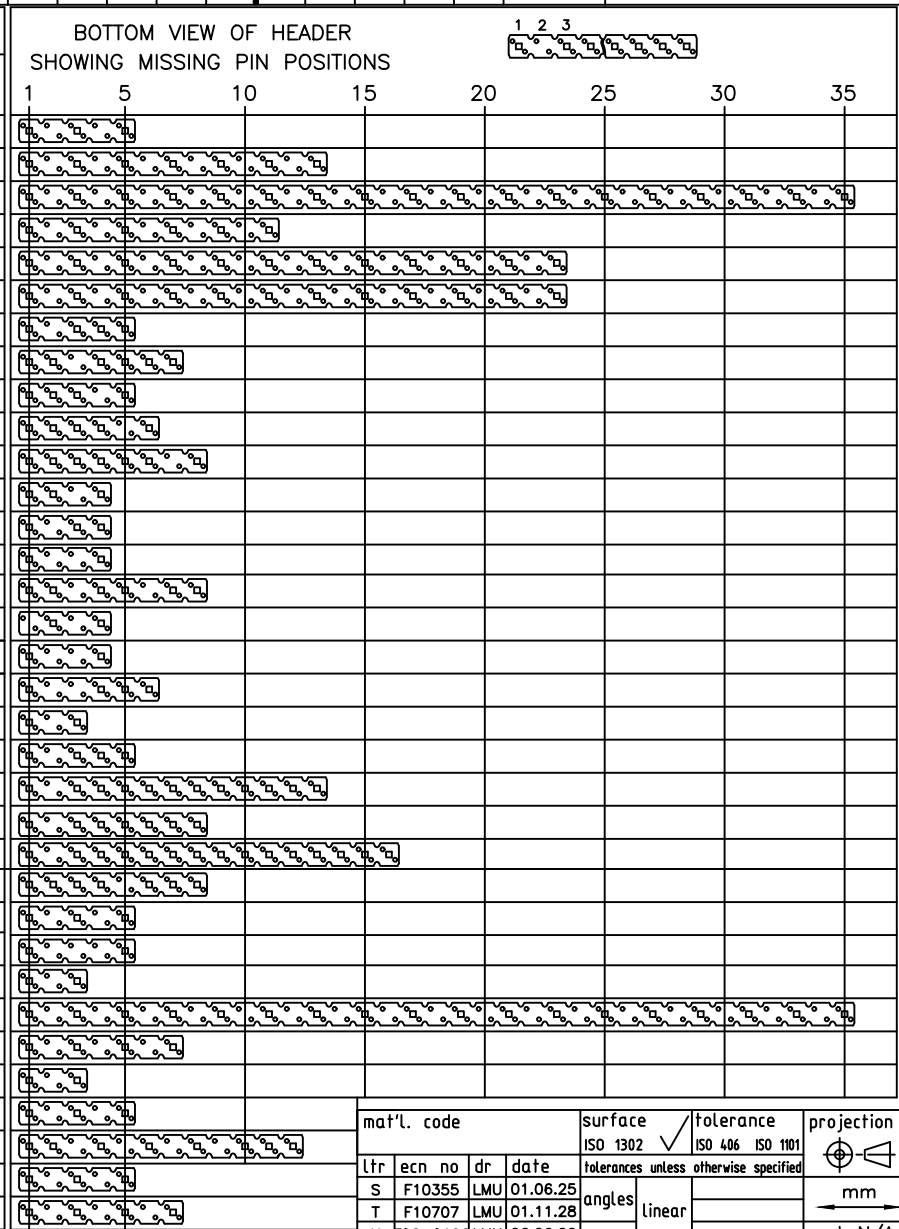


FCIconnect.com

Copyright FCI

mat'l. code		surface		tolerance		projection		product family	
		ISO 1302		ISO 406		ISO 1101		BSTIK	
ltr		ecn no		dr		date		title	
J		F40810		JMC		94.10.20		HEADER, SR, STR,	
K		F50801		JMC		95.10.27		POL, DUPLEX, 2.54mm	
L		F10707		LMU		01.11.28		scale 1:1	
M		F06-0196		LMU		06.06.20		FCI	
N		F11-0034		LMU		11.03.03		dwg no	
				dr		COMPAGNON J		sheet 3 of - size	
				enrg		JMC		77312 A3	
				chr				type	
				appd		JMC		CUSTOMER Drawing	
sheet		revision							
index		sheet							

PIN STYLE	PRODUCT DEFINITION			
	NB OF POS	MATING SIDE	SOLDER SIDE	("OAL") REF
51	1x5	5.72	3.05	11.3
52	1x13	5.72	3.05	11.3
53	1x35	5.72	3.05	11.3
54	1x11	5.72	3.05	11.3
55	1x23	12.83	3.03	18.4
56	1x23	17.5	3.46	23.5
57	1x5	5.84	3.42	11.8
58	1x7	5.72	3.05	11.3
59	1x5	5.72	3.05	11.3
60	1x6	5.72	3.05	11.3
61	1x8	5.72	3.05	11.3
62	1x4	5.72	3.05	11.3
63	1x4	15.57	2.84	20.95
65	1x4	5.72	2.54	10.8
66	1x8	5.72	2.54	10.8
67	1x4	5.72	3.05	11.3
68	1x4	5.72	3.05	11.3
69	1x6	5.72	3.05	11.3
70	1x3	5.72	2.54	10.8
71	1x5	5.84	2.42	10.8
72	1x13	5.72	2.54	10.8
73	1x8	5.84	2.41	10.8
74	1x16	5.84	2.41	10.8
75	1x08	5.84	2.41	10.8
76	1x05	2.50	1.80	6.84
77	1x05	2.50	1.80	6.84
78	1x03	8.13	2.33	13.00
79	1x35	5.84	3.42	11.80
80	1x07	2.50	1.80	6.84
81	1x03	24.90	3.00	30.40
82	1x05	20.65	11.00	34.15
83	1x12	5.84	3.42	11.80
84	1x05	8.00	2.90	13.40
85	1x07	8.00	2.90	13.40



mat'l. code		surface		tolerance		projection	
		ISO 1302		ISO 406 ISO 1101			
		tolerances unless otherwise specified				mm	
lfr	ecn no	dr	date	angles	linear	scale N/A	
S	F10355	LMU	01.06.25				
T	F10707	LMU	01.11.28				
U	F06-0196	LMU	06.06.20				
V	F11-0034	LMU	11.03.03	dr	COMPAGNON J	95.10.11	
W	F11-0045	LMU	11.04.06	enr	JMC	95.10.27	
X	F11-0329	LMU	11.11.17	chr			
Y	B-16703	LMU	14.01.09	appd	JMC	95.10.27	
sheet	revision						
index	sheet						

product family		BSTIK	
title		HEADER, SR, STR, POL, DUPLEX, 2.54mm	
dwg no	77312	sheet 4 of	size A3
type	CUSTOMER	Drawing	

FCconnect.com
 Copyright FCJ

PIN STYLE	PRODUCT DEFINITION				BOTTOM VIEW OF HEADER SHOWING MISSING PIN POSITIONS								
	NB OF POS	MATING SIDE	SOLDER SIDE	("OAL") REF	1	5	10	15	20	25	30	35	
86	1x15	12.56	0.8	15.90									
87	1x17	12.56	0.8	15.90									
88	1x13	5.72	3.05	11.30									
89	1x13	5.84	3.42	11.80									
90	1x08	7.50	3.42	13.46									
91	1x07	12.83	3.03	18.40									
92	1x03	3.55	3.05	9.14									
93	1x05	3.55	3.05	9.14									
94	1x17	11.60	5.05	19.15									
95	1x07	5.84	3.05	11.43									
96	1x03	11.76	3.60	17.90									



Copyright FCI

mat'l. code		surface		tolerance		projection		product family	
		ISO 1302 <input checked="" type="checkbox"/>		ISO 406 ISO 1101				BSTIK	
ltr	ecn no	dr	date	tolerances unless otherwise specified		mm		title	
H	F-28244	DDE	17.09.20	angles				HEADER,SR,STR, POL,DUPLEX,2.54mm	
C	B-20230	LMU	15.02.09	Linear		scale N/A		dwg no	
D	F-24327	AMA	16.06.17	dr	L.MULIN	14.05.26	sheet 5 of		size
E	F-24825	AMA	16.08.26	enr	JMC	14.05.26	77312		A3
F	F-25332	DDE	16.11.15	chr			type		Drawing
G	F-25396	LMU	16.11.21	app	05.26	95.10.27	CUSTOMER		
sheet index	revision sheet								