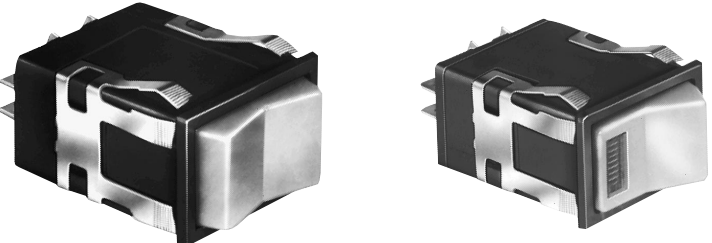


Manual Switches

Power Duty Rocker

AML34/36 Series

INCANDESCENT, NEON, OR NON-LIGHTED DISPLAY



Rocker operators ordered separately.

| | |
|---------------------|---------|
| Electrical Data | page 19 |
| Rockers | page 51 |
| Lamps | page 58 |
| Mounting Dimensions | page 60 |

FEATURES

- Same circuitry, and electrical rating as power duty paddle switches.
- Neon lamp circuitry can be isolated or integral on 2-pole switches; isolated-only on 1-pole switches (see schematics).
- UL recognized, CSA certified.
- AML34 lamp circuit independent of switch circuit.

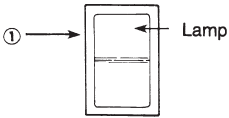


AML34 Series: 2-pole only.
AML36 Series: 1-pole and 2-pole.

AML34 ORDER GUIDE

AML34 accepts one incandescent lamp which can be furnished installed or ordered separately.

| AML34 E | B | A | 4 | AA | 01 |
|--|-------------------|---|---|---|--|
| Housing Type | Bezel Color | Incandescent Lamp Type | Terminal Type | Circuitry Codes | Operating Action |
| AML34 E Rectangular Non. Illum. AML34 F Rectangular 1 Lamp Ckt. | B Black | A No Lamp Installed B 6 V Lamp* C 14 V Lamp* E 28 V Lamp* | 4 .187 × .020 (Solder or Quick-Connect) | Silver Contacts: AA 1-Pole (One Form A Single-Throw) AC 2-Pole (Two Form A) | 01 Maint. ON Maint. OFF |

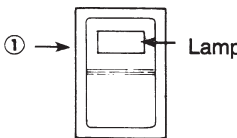


* Lamps will be installed per each lamp circuit specified in the Housing Type.

AML36 ORDER GUIDE

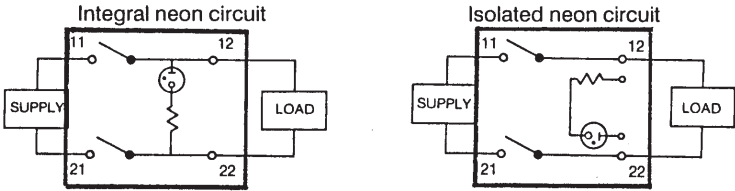
AML36 has neon lamp wired to 125 or 250 VAC resistor.

| AML36 F | B | B | 4 | AA | 01 |
|--|-------------------|--|---|--|--|
| Housing Type | Bezel Color | Neon Lamp Voltage | Terminal Type/ Lamp Circuit | Circuitry Codes | Operating Action |
| AML36 F Rectangular 1 Neon Lamp | B Black | Red 125 VAC C 250 VAC Green M 125 VAC P 250 VAC | 4 .187 × .020 (Solder or Quick-Connect) With Isolated Lamp Circuit 7 .187 × .020 (Solder or Quick-Connect) With Integral Lamp Circuit | Silver Contacts: AA (One Form A Single-Throw) Not available with terminal type 7 AC 2-Pole (Two Form A) | 01 Maint. ON Maint. OFF |



① The "MICRO SWITCH" identification is shown on this side of the switch housing.

Example: **AML36FBB4AA01**
Rectangular rocker switch housing; black bezel; 125 VAC neon lamp; .187 × .020 terminals with isolated lamp circuit; 1-Pole Form A single-throw; with circuit ON in one extreme position and OFF in the other.



Manuals