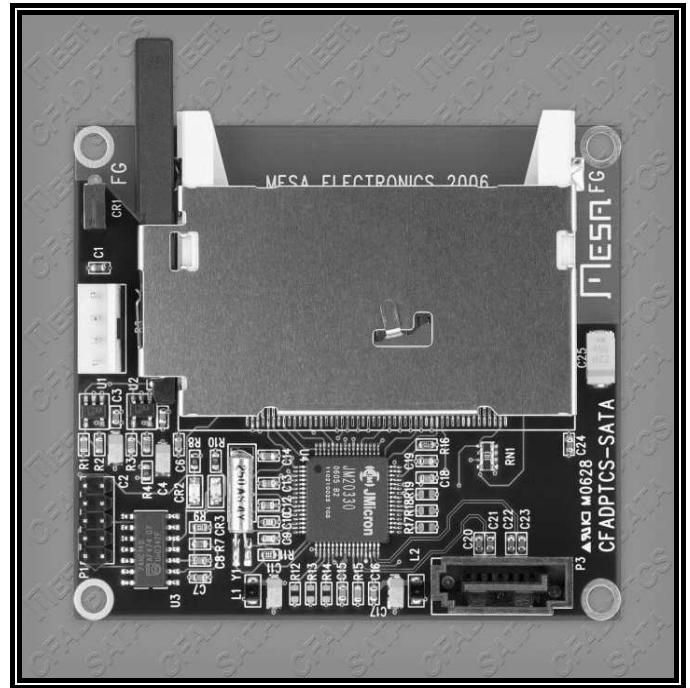




CFADPT9 SATA COMPACT FLASH ADAPTER

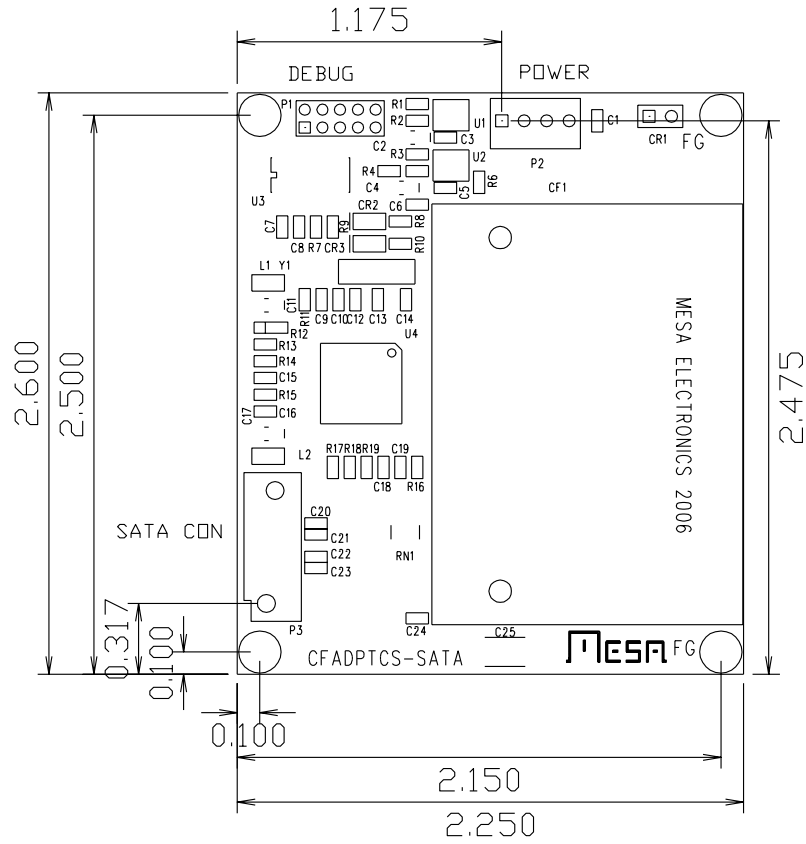
- **SATA to CF adapter**
- **Small form factor**
- **Built in push button card ejector**
- **LED activity indicator**
- **Quiet 4 layer PCB**
- **CF and SATA hot swap capable**
- **Supports DMA capable CF cards to UltraDMA 150**
- **Made in USA - local support**
- **2 year warranty**



The CFADPT9 is a SATA to Compact Flash adapter on a small PCB. The form factor matches our CFADPTCS IDE to CF adapter.

The CFADPT9 supports both PIO mode (0 through 4) and DMA capable CF cards up to UltraDMA150.

CF Card removal resets the SATA controller, allowing hot swap of CF cards. The CFADPT9 also supports SATA hot swap. The CFADPT9 uses a single 5V power supply from the host system. CF card activity, SATA link status and Reset LEDs are provided.



ORDERING INFORMATION:

CFADPT9 SATA -- COMPACT FLASH ADAPTER