

PT 1,5/ 3-PH-5,0 CLIP

Order No.: 1755745



<http://eshop.phoenixcontact.de/phoenix/treeViewClick.do?UID=1755745>

Plug component, Nominal current: 10 A, Rated voltage (III/2): 400 V,
Number of positions: 3, Pitch: 5 mm, Color: green, Metal surface: Sn

Commercial data

| | |
|--------------------------|---------------------|
| GTIN (EAN) | 4046356334921 |
| sales group | E402 |
| Pack | 250 pcs. |
| Customs tariff | 85366990 |
| Weight/Piece | 0.00324 KG |
| Catalog page information | Page 187 (NTK-2010) |

<http://www.download.phoenixcontact.com>
Please note that the data given here has been taken from the online catalog. For comprehensive information and data, please refer to the user documentation. The General Terms and Conditions of Use apply to Internet downloads.

Technical data

Dimensions / positions

| | |
|------------------------|---------|
| Pitch | 5 mm |
| Dimension a | 10 mm |
| Number of positions | 3 |
| Tightening torque, min | 0.35 Nm |
| Tightening torque max | 0.4 Nm |

Technical data

| | |
|---------------------------|-------------------|
| Range of articles | PT 1,5/..-PH CLIP |
| Insulating material group | I |

| | |
|-------------------------------------|---------------------|
| Rated surge voltage (III/3) | 4 kV |
| Rated surge voltage (III/2) | 4 kV |
| Rated surge voltage (II/2) | 4 kV |
| Rated voltage (III/2) | 400 V |
| Rated voltage (II/2) | 630 V |
| Connection in acc. with standard | EN-VDE |
| Nominal current I_N | 10 A |
| Nominal voltage U_N | 250 V |
| Nominal cross section | 1.5 mm ² |
| Maximum load current | 10 A |
| Insulating material | PA |
| Inflammability class acc. to UL 94 | V0 |
| Stripping length | 6 mm |
| Nominal voltage, UL/CUL Use Group B | 300 V |
| Nominal current, UL/CUL Use Group B | 5 A |
| Nominal voltage, UL/CUL Use Group D | 300 V |
| Nominal current, UL/CUL Use Group D | 5 A |

Connection data

| | |
|--|----------------------|
| Conductor cross section solid min. | 0.2 mm ² |
| Conductor cross section solid max. | 1.5 mm ² |
| Conductor cross section stranded min. | 0.2 mm ² |
| Conductor cross section stranded max. | 1.5 mm ² |
| Conductor cross section stranded, with ferrule without plastic sleeve min. | 0.25 mm ² |
| Conductor cross section stranded, with ferrule without plastic sleeve max. | 1 mm ² |
| Conductor cross section stranded, with ferrule with plastic sleeve min. | 0.25 mm ² |
| Conductor cross section stranded, with ferrule with plastic sleeve max. | 1 mm ² |
| Conductor cross section AWG/kcmil min. | 26 |
| Conductor cross section AWG/kcmil max | 14 |
| Minimum AWG according to UL/CUL | 28 |
| Maximum AWG according to UL/CUL | 14 |

Certificates / Approvals



Certification CUL, UL

CUL

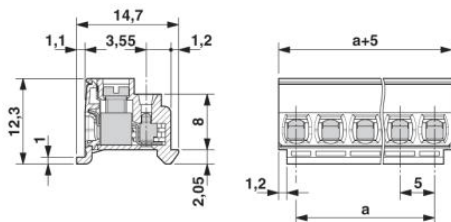
| | |
|-----------------------|-------|
| Nominal voltage U_N | 300 V |
| Nominal current I_N | 5 A |
| AWG/kcmil | 28-14 |

UL

| | |
|-----------------------|-------|
| Nominal voltage U_N | 300 V |
| Nominal current I_N | 5 A |
| AWG/kcmil | 28-14 |

Diagrams/Drawings

Dimensioned drawing



Address

PHOENIX CONTACT Inc., USA
586 Fulling Mill Road
Middletown, PA 17057, USA
Phone (800) 888-7388
Fax (717) 944-1625
<http://www.phoenixcon.com>



© 2010 Phoenix Contact
Technical modifications reserved;