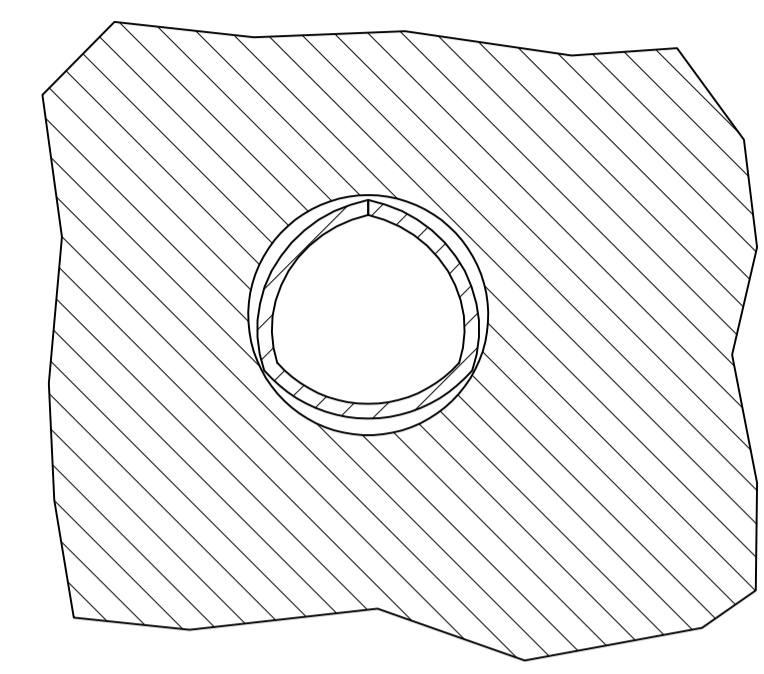
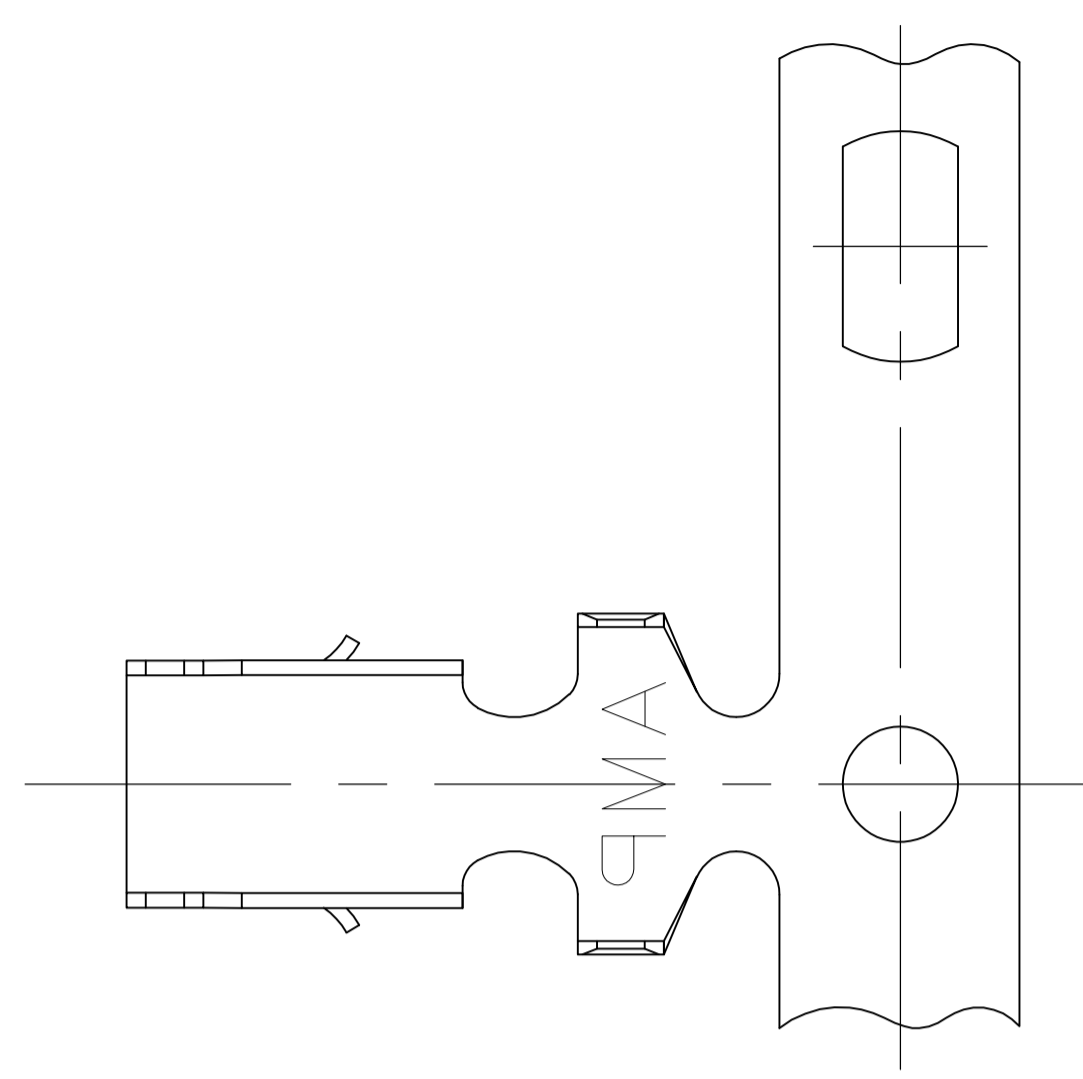
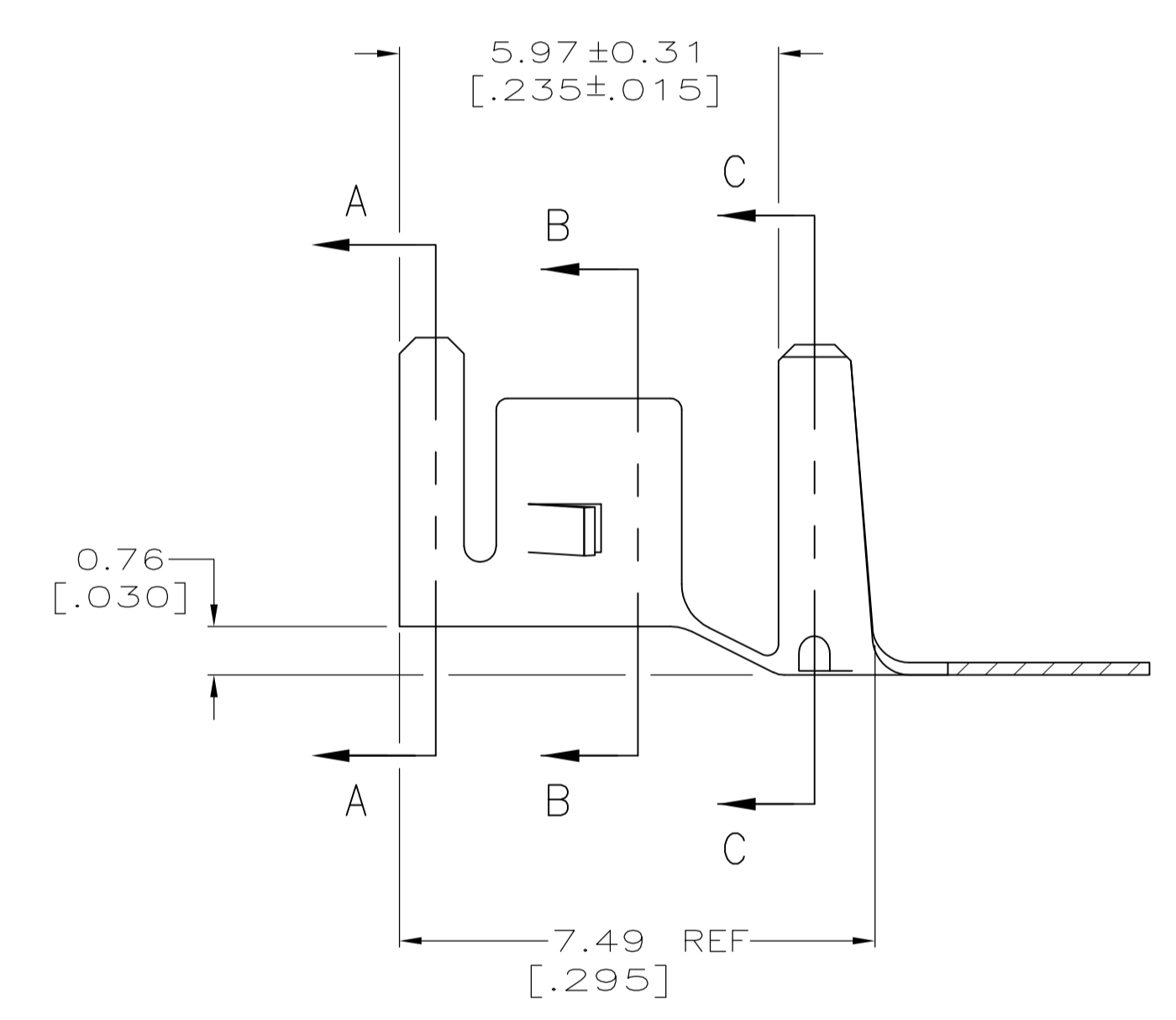


LOC		DIST		REVISIONS			
CM	00	REV	DATE	BY	CHK	APPV	
B2		REVISED PER ECO-12-014997	23AUG12	KH	SM		

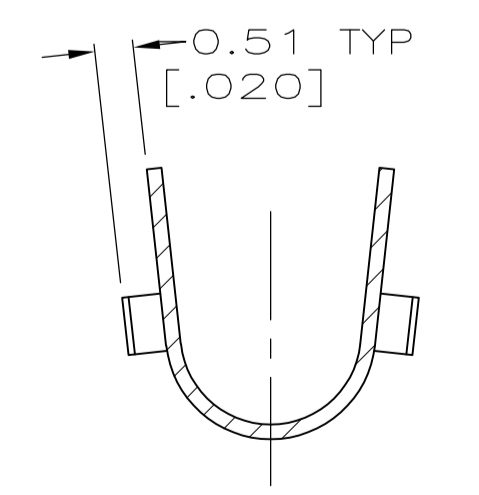
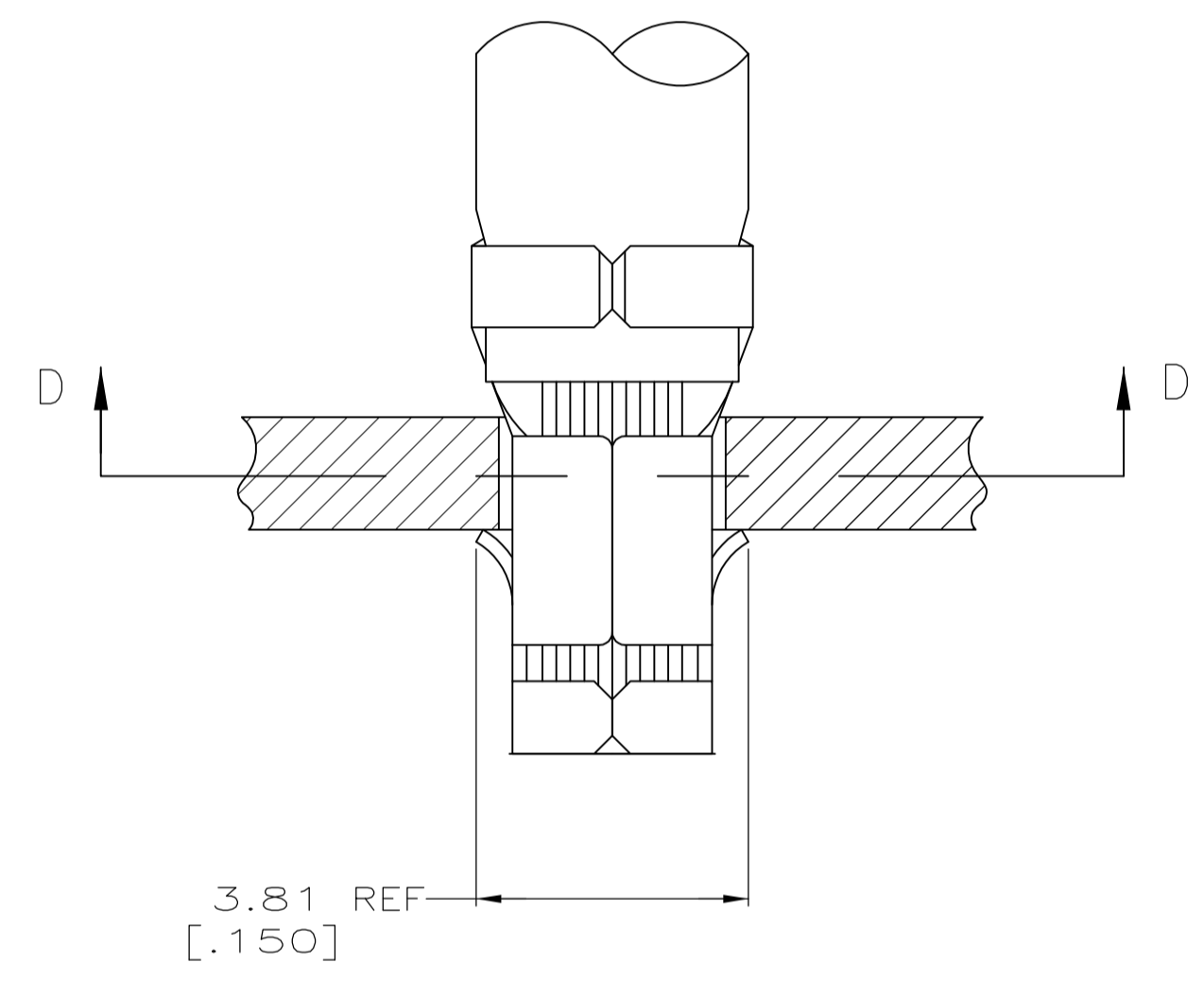
- 1 PARTS COMPLY WITH AMP SOLDERABILITY SPEC 109-11-5.
- 2 0.00508 [.000200] MIN BRIGHT TIN-LEAD.
- 3 WIRE RANGE: 3 mm<sup>2</sup> (12 AWG).
- 4 INSULATION RANGE: 2.29 - 3.81 [.090 - .150] DIA.
- 5 DIMENSIONS IN BRACKETS ARE IN INCHES.
- 6 0.00508 [.000200] MIN BRIGHT TIN.



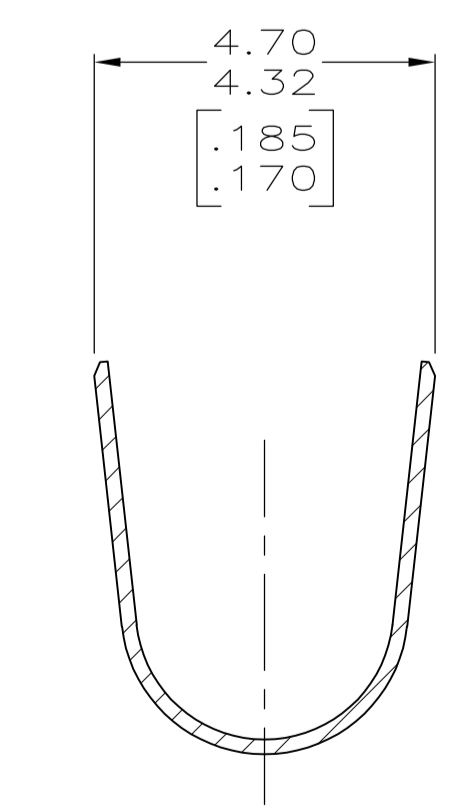
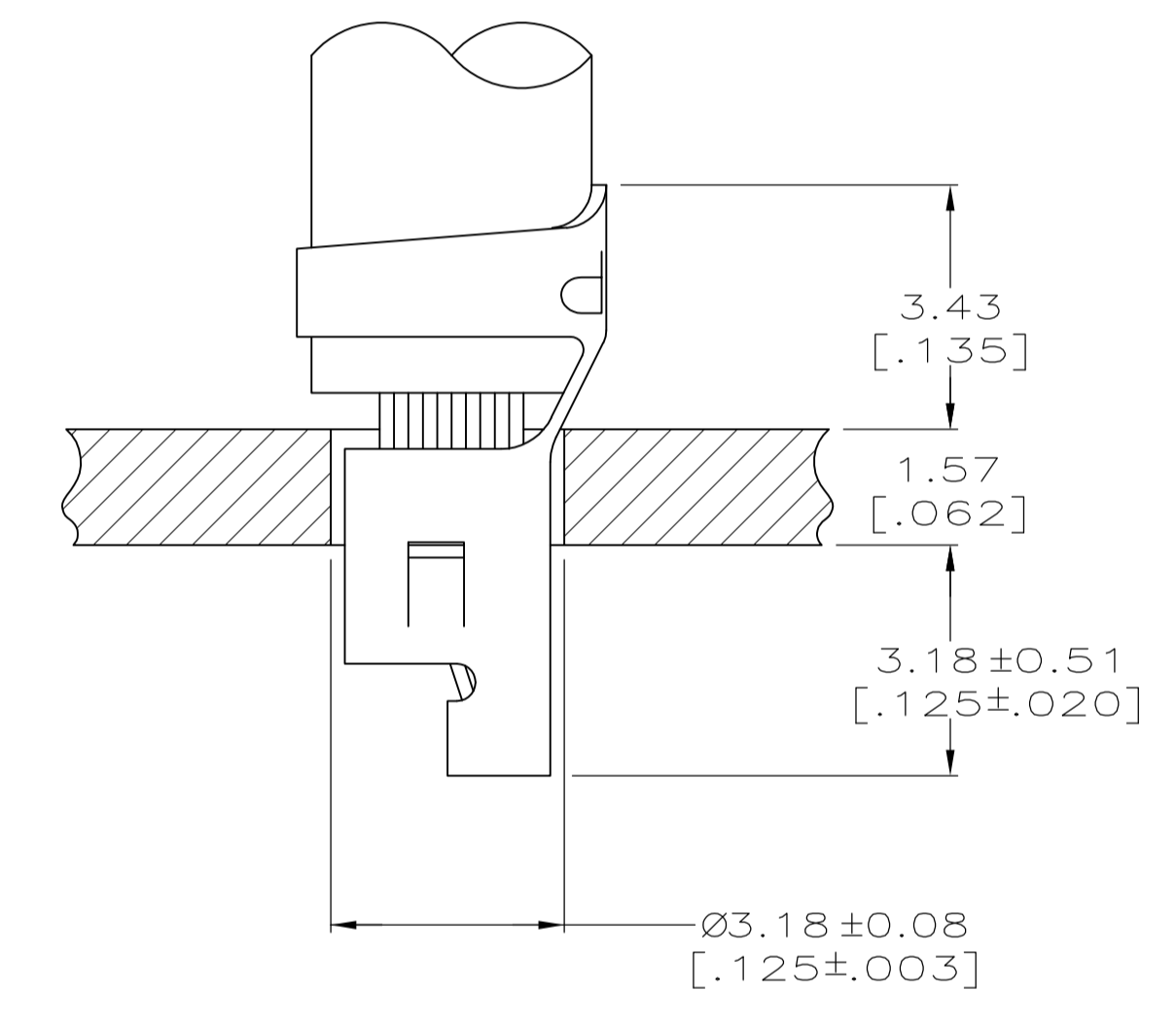
SECTION D-D



SECTION A-A



SECTION B-B



SECTION C-C

6	3-794013-1
2	<del>794013-1</del>
FINISH	PART NO.

SUPERSEDED BY 3-794013-1

THIS DRAWING IS A CONTROLLED DOCUMENT.		DIN S. CARPENTER 21AUG2003		TE Connectivity	
DIMENSIONS: INCHES		TOLERANCES UNLESS OTHERWISE SPECIFIED:		APVD J. ELLIS 21AUG2003	
0 PLC ±		1 PLC ±		NAME	
1 PLC ±		2 PLC ± 0.13 [.005]		TERMINAL, AMP-IN	
2 PLC ±		3 PLC ±		APPLICATION SPEC	
3 PLC ±		4 PLC ±		114-1016	
4 PLC ANGLES ±		FINISH		SIZE	
MATERIAL 0.198 [.0078] PH BRZ		FINISH		CAGE CODE	
				DRAWING NO	
				A1 00779	
				DRAWING NO	
				C=794013	
				RESTRICTED TO	
				-	
				CUSTOMER DRAWING	
				SCALE 10:1	
				SHEET 1 OF 1	
				REV B2	

METRIC