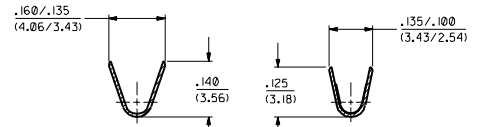
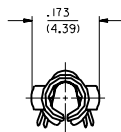
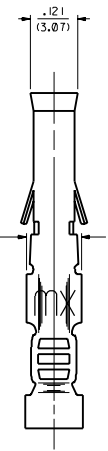
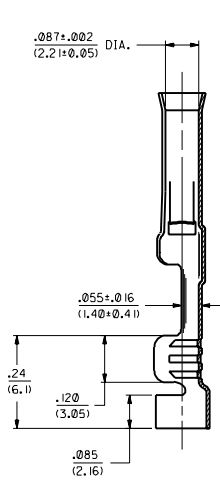
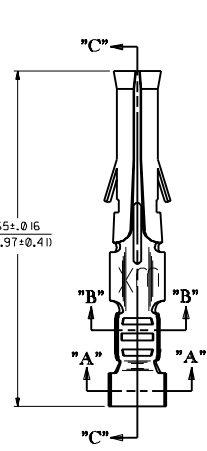


| PART NO. | ENG. NO. |
|------------|----------------|
| 02-09-1122 | 2273-A(P90 I) |
| 02-09-1123 | 2273-A(P90 IL) |
| - | - |
| - | - |
| - | - |
| - | - |
| - | - |
| - | - |



SECTION "A-A"

SECTION "B-B"



SECTION "C-C"

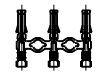
LEGEND
 2273-A(****)*
 * - FORM BLANK-CHAIN L-LOOSE
 P-PREPLATE BLANK-POSTPLATE
 - FINISH CODE

- NOTES:
1. TERMINAL FOR USE WITH .093/(2.36) SERIES HOUSINGS AND WILL ACCEPT 18 THRU 22 AWG WIRE.
 2. INSERTION FORCE: 2.0 LBS. AVG. WHEN TERMINAL IS INSERTED INTO AN .093 SERIES HOUSING.
 3. CONTACT RETENTION: 20 LBS. MIN.
 4. THIS PART CONFORMS TO PRODUCT SPEC. 02-09.

MATERIAL NOTES:
 1. CARTRIDGE BRASS, ALLOY *C26000
 .008/(0.20) THICK, SPRING TEMPER

FINISH CODES:
 901 HOT TIN DIP .000020/(0.0005) MIN.

CHAIN FORM
 FULL SCALE



| | | |
|---|---|----|
| B | REVISE PER EER US 0799 C/C 2/10/94 | RW |
| A | FINAL RELEASE ECP 11/975 C/C 4/5/91 | RW |

| | | | | | |
|--|--|---------------------------|--|-------------------|--|
| DIMENSIONS SHOWN METRIC INCH | | MFG. SH. REV. L.T.R. | | REVISIONS | |
| TITLE | | REVISE ONLY ON CAD SYSTEM | | DATE | |
| CRIMP TERM, FEMALE .093/(2.36) DIA. FOR 18 THRU 22 AWG WIRE | | REV. NO. 101 | | 14/5/91 | |
| MOLEX INCORPORATED | | MFG. NO. | | SD-2273-A | |
| PART NO. 2273-A | | SCALE 6:1 | | DWG. NO. 502273X1 | |
| DRAWN BY CWF | | CHECKED BY RW | | DATE 10/1/91 | |
| APPROVED BY CWF | | SCALE 6:1 | | DWG. NO. 502273X1 | |
| THIS DRAWING CONTAINS INFORMATION THAT IS PROPRIETARY TO MOLEX INC. AND SHOULD NOT BE USED WITHOUT WRITTEN PERMISSION. | | DWG. NO. 502273X1 | | SCALE 6:1 | |