

REV	DESCRIPTION	DATE	DWN	APR
A	NEW DRAWING PER ECO-14-007060	13MAY2014	NK	RH

BCD CODE 131

POS	#	1	2	3	4	5	6	7	8	9
C	X	X	X	X	X	X	X	X	X	X
1		X	X		X	X		X		X
2			X	X		X	X			
4				X	X	X	X			
8								X	X	

HEXADECIMAL CODE 3#1

POS	#	1	2	3	4	5	6	7	8	9	A	B	C	D	E	F
C	X	X	X	X	X	X	X	X	X	X	X	X	X	X	X	X
1		X	X	X	X	X	X	X	X	X	X	X	X	X	X	X
2			X	X		X	X		X	X		X	X		X	X
4				X	X	X	X				X	X	X	X		X
8								X	X	X	X	X	X	X	X	X

BCD COMPLEMENT CODE 137

POS	#	1	2	3	4	5	6	7	8	9
C	X	X	X	X	X	X	X	X	X	X
1	X	X	X	X	X	X	X	X	X	X
2	X	X		X	X		X	X		X
4	X	X	X						X	X
8	X	X	X	X	X	X	X	X		

HEXADECIMAL COMPLEMENT CODE 3#7

POS	#	1	2	3	4	5	6	7	8	9	A	B	C	D	E	F
C	X	X	X	X	X	X	X	X	X	X	X	X	X	X	X	X
1	X	X	X	X	X	X	X	X	X	X	X	X	X	X	X	X
2	X	X		X	X		X	X		X	X		X	X		X
4	X	X	X						X	X	X					X
8	X	X	X	X	X	X	X	X	X	X	X	X	X	X	X	X

BCD PLUS BCD COMPLEMENT CODE 141

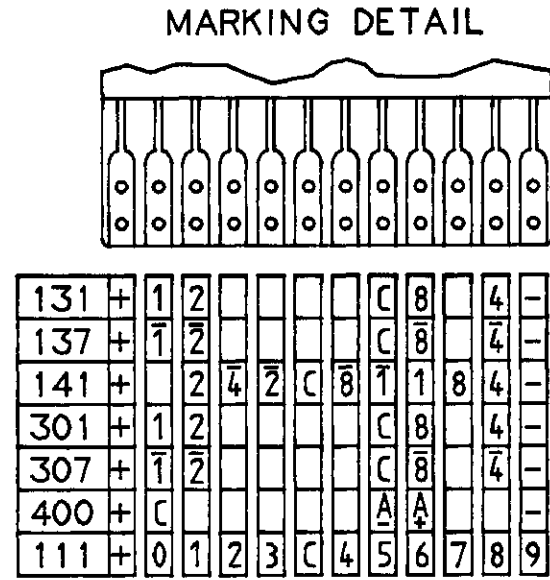
POS	#	1	2	3	4	5	6	7	8	9
C	X	X	X	X	X	X	X	X	X	X
1	X	X		X	X		X	X		X
2	X	X		X	X		X	X		X
4	X	X	X						X	X
8	X	X	X	X	X	X	X	X		
C	X	X	X	X	X	X	X	X	X	X
1	X	X	X	X	X	X	X	X	X	X
2		X	X		X	X		X	X	
4			X	X	X	X				X
8				X	X	X	X	X	X	X

DECIMAL CODE 111

POS	#	1	2	3	4	5	6	7	8	9
C	X	X	X	X	X	X	X	X	X	X
#	X									
1		X								
2			X							
3				X						
4					X					
5						X				
6							X			
7								X		
8									X	
9										X

CHANGE OVER SWITCH CODE 4#8

POS	C	A+	A-
+	X	X	
-	X		X
+	X	X	
-	X		X
+	X	X	
-	X		X
+	X	X	
-	X		X
+	X	X	
-	X		X

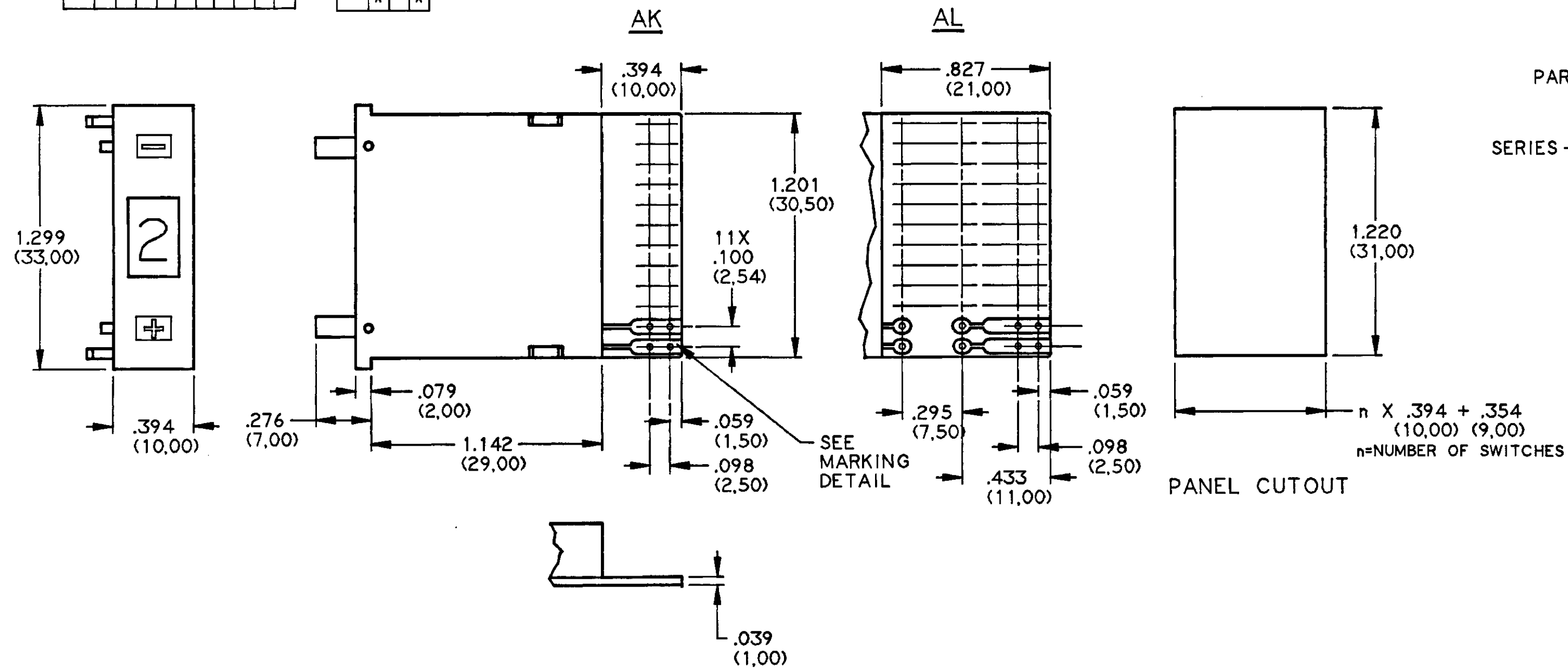


**SPECIFICATIONS:**

- CONTACT RATING: GOLD 0.4 VA @ 20 VDC OR AC.
- CONTACT CIRCUIT RESISTANCE: 0.20 OHM MAXIMUM.
- MECHANICAL LIFE: MORE THAN 10<sup>6</sup> OPERATIONS.
- OPERATING TEMPERATURE: -20°C TO +80°C.
- ACTUATION FORCE: APPROX. 16 oz

**MATERIALS:**

HOUSING: HIGH TEMPERATURE THERMOPLASTIC RESIN  
 BLACK MATTE FINISH  
 PC BOARD: FR4 GLASS EPOXY  
 PC BOARD CONTACTS AND TERMINALS: GOLD OVER NICKEL ON COPPER  
 MOVING CONTACTS: GOLD OVER NICKEL ON COPPER ALLOY  
 WINDOW: THERMOPLASTIC RESIN  
 CHARACTER COLOR: WHITE ON BLACK BACKGROUND  
 CHARACTER HEIGHT: 10/16 DIGIT .276 (7,00)/.169 (4,30)



PART NUMBER SEQUENCE

DPS10\*\*\*A\*\*

SERIES ——— TYPE: AK AL

CODE: 111  
 131  
 137  
 141  
 301  
 307  
 400

UNLESS OTHERWISE SPECIFIED DIMENSIONS ARE IN IN GND TOLERANCES PER DIN 7168					THIRD ANGLE PROJECTION	UNLESS OTHERWISE SPECIFIED DIMENSIONS ARE IN INCHES DO NOT SCALE PRINT			ORIGINAL DATE OF DRAWING: 10/9/92	TE Connectivity
GREATER THAN	.020 (0,50)	.236 (6,00)	1.181 (30,00)	4.724 (120,00)		12.402 (315,00)	DATABASE 81035	MAINCELL 81035	LIBRARY	
LESS THAN	.236 (6,00)	1.181 (30,00)	4.724 (120,00)	12.402 (315,00)	39.370 (1000,00)	MATERIAL: SEE SPECIFICATIONS ABOVE			CHECKED:	DATE:
	±.004 (±0,10)	±.008 (±0,20)	±.012 (±0,30)	±.020 (±0,50)	±.031 (±0,80)	FINISH:			APPROVED: <i>N. S. Kishan</i>	DATE: 11/10/92
									CODE IDENT. NO. 91506	DWG. SIZE C
									NEXT ASSY:	SCALE: 2/1 SHEET 1 OF 1