

REV	DESCRIPTION	DATE	DWN	APR
8	REVISED PER ECO-11-005139	28MAR11	RK	HMR

**SAFETY ORGANIZATION(S):**

THIS FILTER HAS BEEN FORMALLY RECOGNIZED, CERTIFIED OR APPROVED BY THE LISTED AGENCY. THEREFORE, ALL TEST/REQUIREMENTS SPECIFIED IN THE LATEST REVISION OF THE FOLLOWING AGENCY STANDARDS HAVE BEEN MET:

UL RECOGNIZED  
 CSA CERTIFIED  
 VDE APPROVED

UL 1283  
 CSA 22.2, NO.0,0.4,8  
 VDE 565-3

**OPERATING SPECIFICATIONS:**

**LINE VOLTAGE/CURRENT:** 10 AMP., 120/250 VAC  
 8 AMP./40°C, 250 VAC

**LINE FREQUENCY:** 50-60Hz

**MAX. CASE RISE @ RATED CURRENT:** 40°C

**MAX. LEAKAGE CURRENT, EACH LINE TO GROUND:** 0.5mA at 120V 60 Hz  
 1.0 mA at 250V 50 Hz

**OPERATING AMBIENT TEMP. RANGE:** -10°C TO +40°C @ RATED CURRENT, I<sub>r</sub>

IN AN AMBIENT, T<sub>a</sub>, HIGHER THAN 40°C, THE MAXIMUM OPERATING CURRENT, I<sub>o</sub>, IS AS FOLLOWS:

$$I_o = I_r \sqrt{\frac{85 - T_a}{45}}$$

**RELIABILITY SPECIFICATIONS:**

**STORAGE TEMPERATURE:** -40°C TO +85°C

**HUMIDITY:** 21 DAYS @ 40°C 95% RH

**CURRENT OVERLOAD TEST:** 6 TIMES RATED CURRENT FOR 8 SECONDS

**TEST SPECIFICATIONS:**

**INDUCTANCE:** 1.2 mH NOMINAL

**CAPACITANCE: (MEASURED @ 1 KHz, 0.25 VAC MAX., 25°C ±1°C)**

LINE TO GROUND: .011µF ±20%

LINE TO LINE: .813µF ±20%

**DISCHARGE RESISTOR:** 330 KΩ

**LINE/GROUND AND LINE/LINE INSULATION RESISTANCE (W/O DISCHARGE RESISTOR):** 6000 MΩ (MIN) AT 100 VDC 20°C AND 50% RH

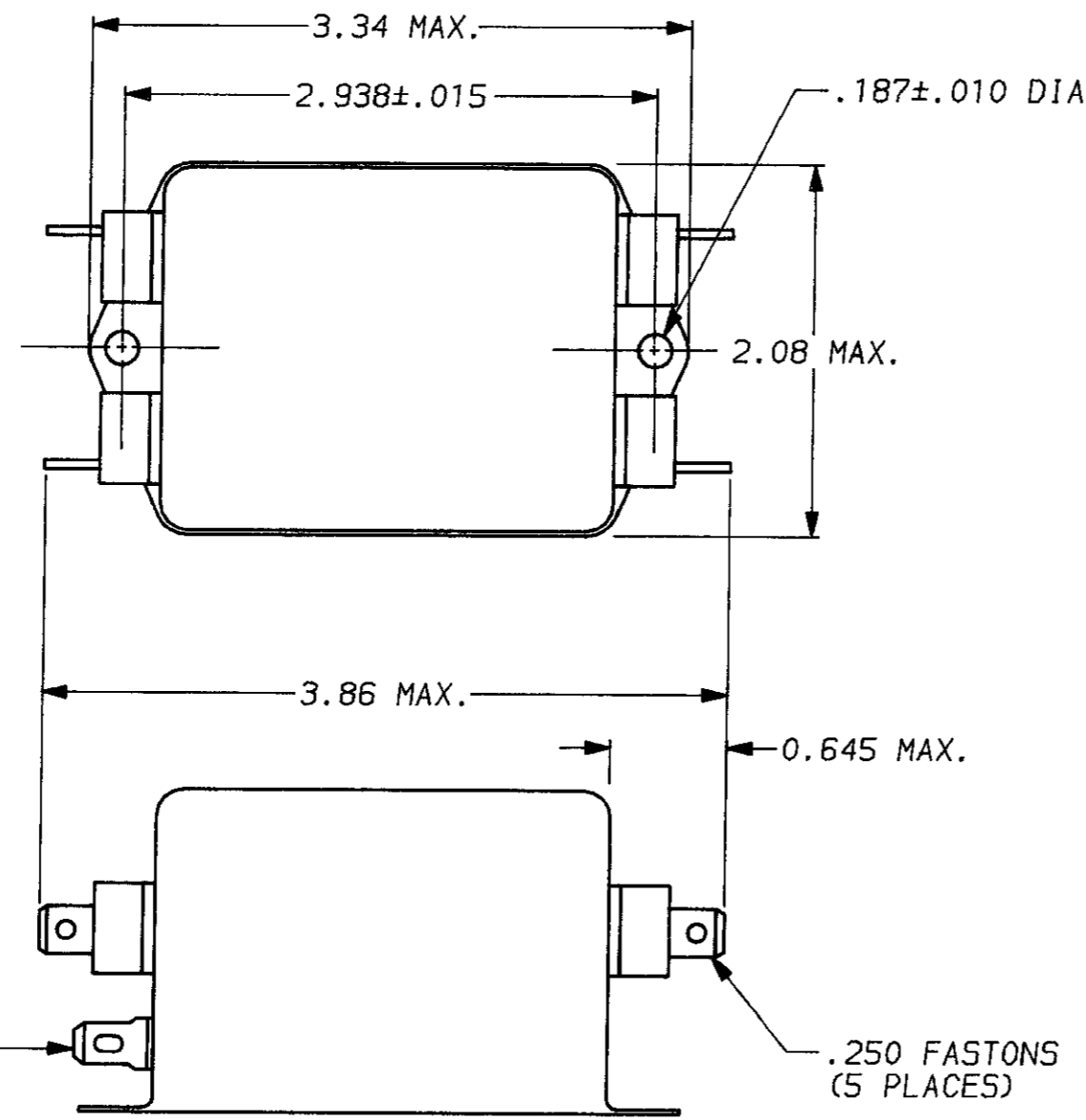
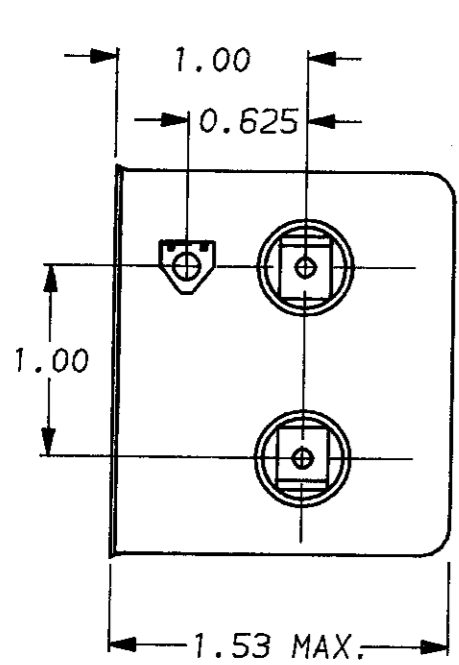
**RECOMMENDED RECEIVING INSPECTION HIPOT:**

LINES TO GROUND: 2250 VDC FOR 1 MINUTE

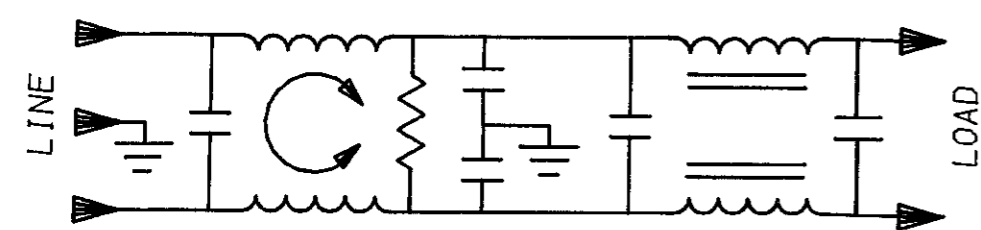
LINE TO LINE: 1450 VDC FOR 1 MINUTE

**FILTER APPROVAL:**

THE BEST WAY TO SELECT AND QUALIFY A FILTER IS FOR YOUR ENGINEERING TO TEST THE UNIT IN YOUR EQUIPMENT.



0.069 X 0.155 SLOT



50Ω - 50Ω (MINIMUM) INSERTION LOSS									
FREQUENCY MHz	.15	.2	.5	1	2	5	10	20	30
COMMON dB	17	20	30	41	47	55	60	56	48
DIFF. dB	25	25	65	65	65	65	65	55	55

TOLERANCE EXCEPT AS NOTED

DECIMAL: .XXX .XX .X ANGLES ± 1°

ENGLISH: ± .025

METRIC: ± —

MATERIAL: AS SUPPLIED

FINISH: AS SUPPLIED



POWER LINE FILTER

SCALE	DATE	DRG. NO.	REV.
NTS	9-12-89	10VV1.	8
DRW. BY	ORIGINATOR		
TDL	CW		