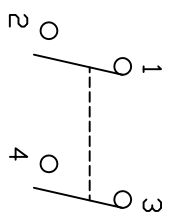
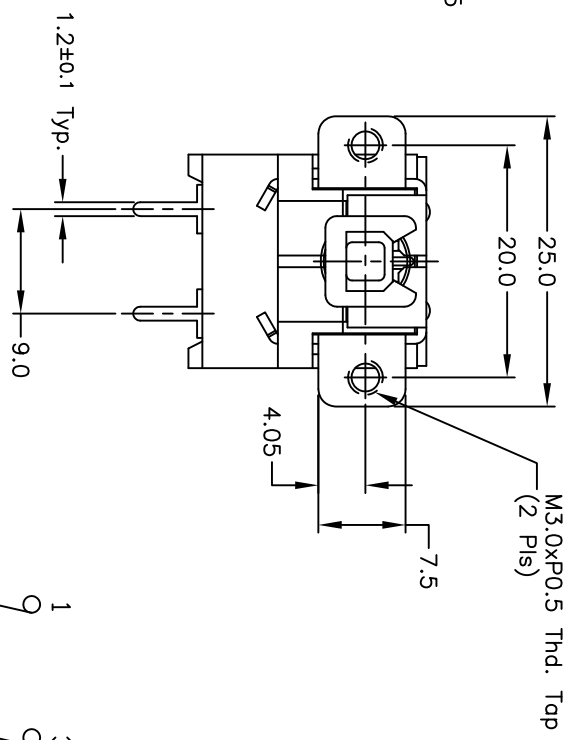
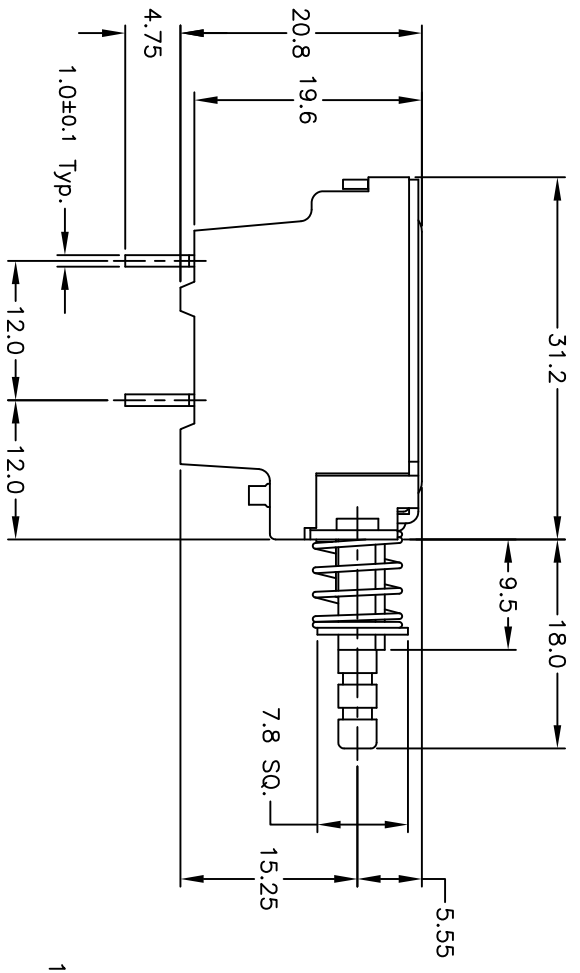


RECOMMEND P.C.B. LAYOUT



NOTES:

1. ALL DIMENSIONS IN MM
2. GENERAL TOLERANCE: 0.0=±0.4
0.00=±0.25
3. RATING: AC 250V 5A; IN-RUSH: 80A, TV-5
4. CONTACT RESISTANCE: 50m ohms MAX. (AT DC 5V 1A)
5. DIELECTRIC STRENGTH: AC 1,000V FOR 1 MINUTE
6. OPERATING FORCE: 500±100gf
7. TRAVEL: Full: 4.0mm; Lock: 2.5mm

CIRCUIT: DPST (Normally Open)
CONTACT CONFIGURATION



B	19646	ADDED LOGD	02/02/11	BMA
A	10235	RELEASED FOR PRODUCTION		
REV.	ECN No.	DESCRIPTION	DATE	CHKD

TITLE		SCALE	DATE	DR	DWG	REV
P297 EE P B		1.5:1	6/7/99	MM	P030115	B

THE INFORMATION CONTAINED IN THIS DOCUMENT IS PROPRIETARY TO E-SWITCH AND IS NOT TO BE COPIED OR TRANSFERRED