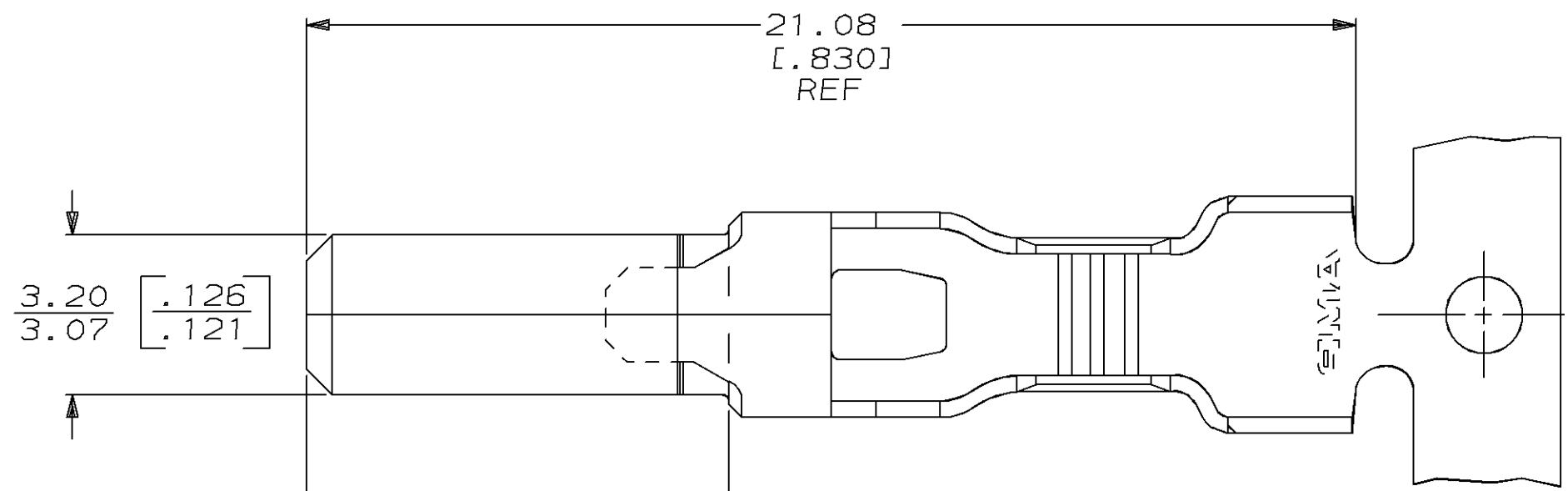
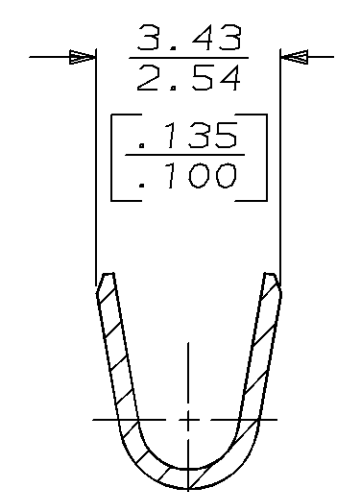
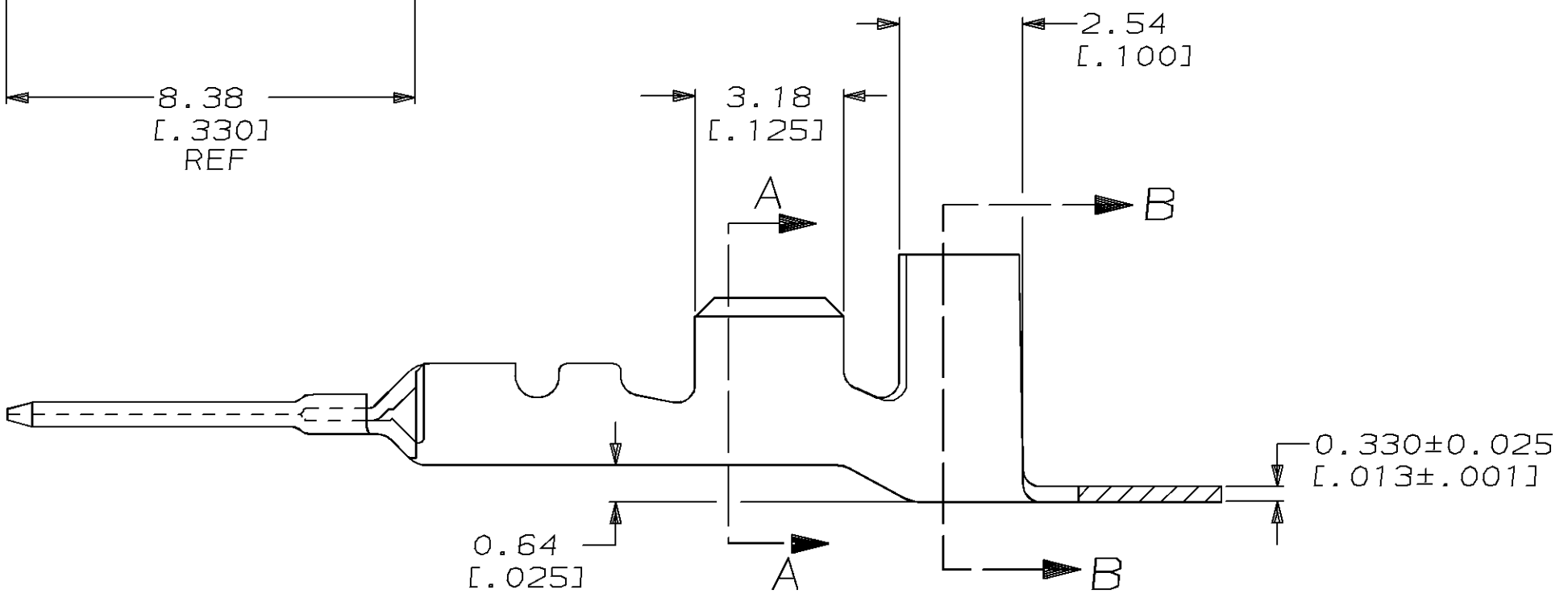
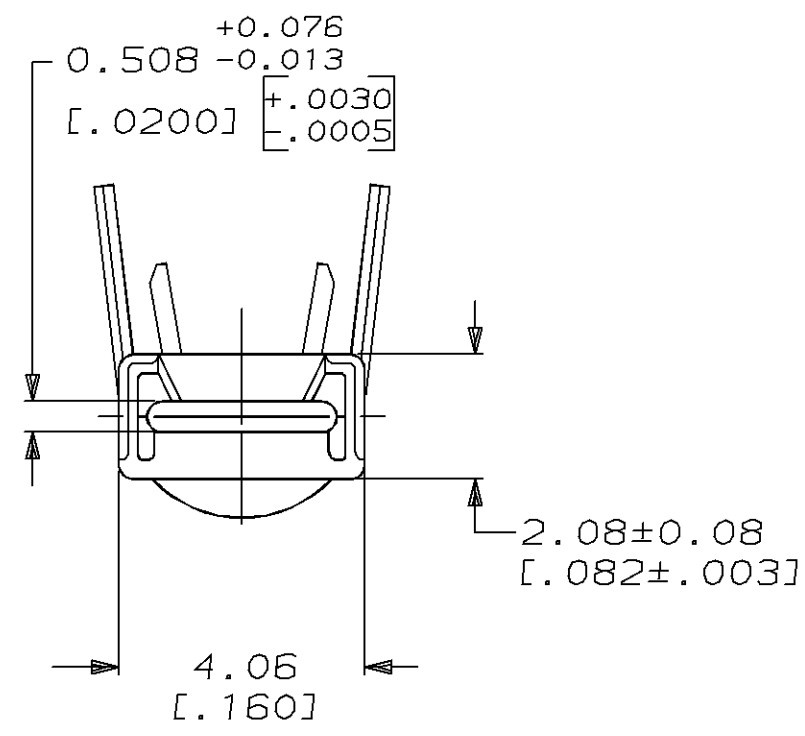


THIS DRAWING IS UNPUBLISHED. RELEASED FOR PUBLICATION, 19 .
 © COPYRIGHT 19 BY AMP INCORPORATED. ALL INTERNATIONAL RIGHTS RESERVED.

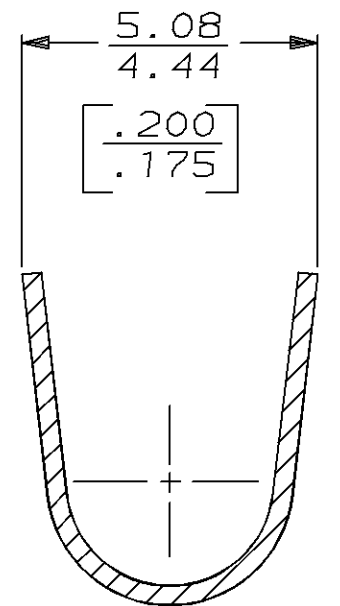
LOC	DIST	P	F	ZONE	LTR	REVISIONS	DATE	APPD
AF	50				C	REVISIED PER 0710-0055-96	12/FEB/96	PF/DD



1 CONTINUOUS STRIP ON REELS.
 (1) 0.8mm - [18] AWG - 2.84 [.112] INS DIA AND
 (1) 1.3mm - [16] AWG - 3.12 [.123] INSUL DIA.



SECTION A-A



SECTION B-B

	0.5 - 2.0mm ² [20-14] AWG	63627-1
INSULATION RANGE	WIRE RANGE	PART NO

DO NOT SCALE PRINT. UNLESS SPECIFIED DIMENSIONS IN mm [INCHES] TOLERANCES ON: 2 PLC DEC ± 0.25 [.010] 3 PLC DEC ± - ANGLES ± -	DR 3/25/92 P FORTNEY	AMP AMP Incorporated Harrisburg, PA 17105-3608	
	CHK 3/25/92 JR RUTH		
MATERIAL 4M BRASS	APPD 3/25/92 K SHANK	NAME CONTACT, 3.18 [.125] BLADE	
FINISH 0.002032 [.000080] MIN TIN PLATE PER MIL-T-10727	APPD 3/25/92 R WEAVILL	PRODUCT SPEC -	
	APPLICATION SPEC 114-49003	SIZE C	CAGE CODE 00779
	WEIGHT -	SCALE 8:1	DRAWING NO 63627
			SHEET 1 OF 1

METRIC