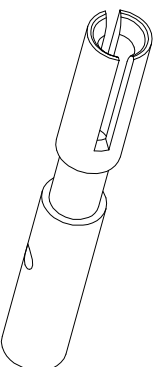
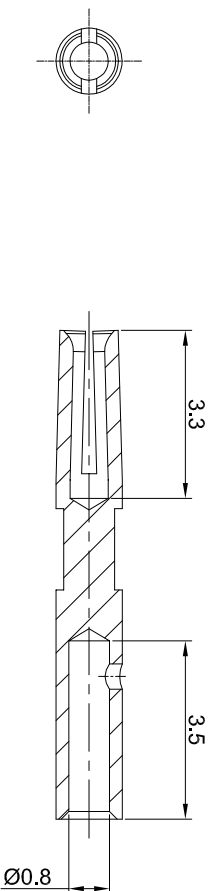
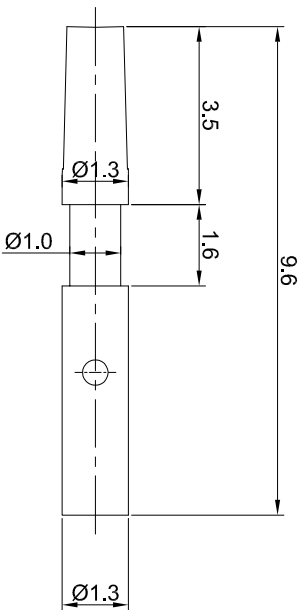


REVISIONS				
REV	ECO	DESCRIPTION	DATE	BY APPR
A1	-	RELEASED DRAWING	Jun.05.2018	White TOMMIY



- NOTES: UNLESS OTHERWISE SPECIFIED
- MATERIAL: COPPER ALLOY, GOLD PLATED
  - SPECIFICATIONS:
    - RATED CURRENT: 0.5 AMPS
    - CONTACT RESISTANCE: <12.5 milliohm
    - AVAILABLE WIRE RANGE: 22AWG~26AWG
    - ROHS COMPLIANT
  - ALL DIMENSIONS ARE FOR REFERENCE USE ONLY.

QUANTITY	SEE PART NUMBER CHART	PART NUMBER	DESCRIPTION	ITEM
1				1

### MATERIALS LIST

UNLESS OTHERWISE SPECIFIED	SIGNATURES	DATE
1) All dimensions are in millimeters) 2) Tolerances are as follows: DEC 2014 5 DEC 2014 5 PL DEC 2014 5 3) Note reference =	DRAWN: White CHECKED: Tod ENGINEER: APPROVAL: Tommy	JUN.05.2018 JUN.05.2018 JUN.05.2018

PROCESS SPECIFICATIONS:	CUSTOMER:	SIZE	TYPE	DWG NO:	REVISION
NEAT ASSTY:	THIS DRAWING IS SUPPLIED FOR INFORMATION ONLY. DESIGN FEATURES, SPECIFICATIONS AND PERFORMANCE DATA ARE THE PROPERTY OF AMPHENOL CORPORATION. NO RIGHTS OR PERMISSIONS ARE GRANTED FOR REPRODUCTION OR TRANSMISSION IN ANY FORM OR BY ANY MEANS, ELECTRONIC OR MECHANICAL, INCLUDING PHOTOCOPYING, RECORDING, OR BY ANY INFORMATION STORAGE AND RETRIEVAL SYSTEMS. DIMENSIONS ARE SUBJECT TO NORMAL MANUFACTURING VARIATIONS.	B	C-	SC000460	A1

Socket contact, 0.6mm, Crimp 22~26AWG

**Amphenol**

Sine Systems - www.amphenol-sine.com  
44724 Wadley Drive  
Clinton Township, MI 48036

TITLE:

Socket contact, 0.6mm, Crimp 22~26AWG

DWG NO: SC000460

REV: A1

SH: 1

OF: 1