

5

4

3

2

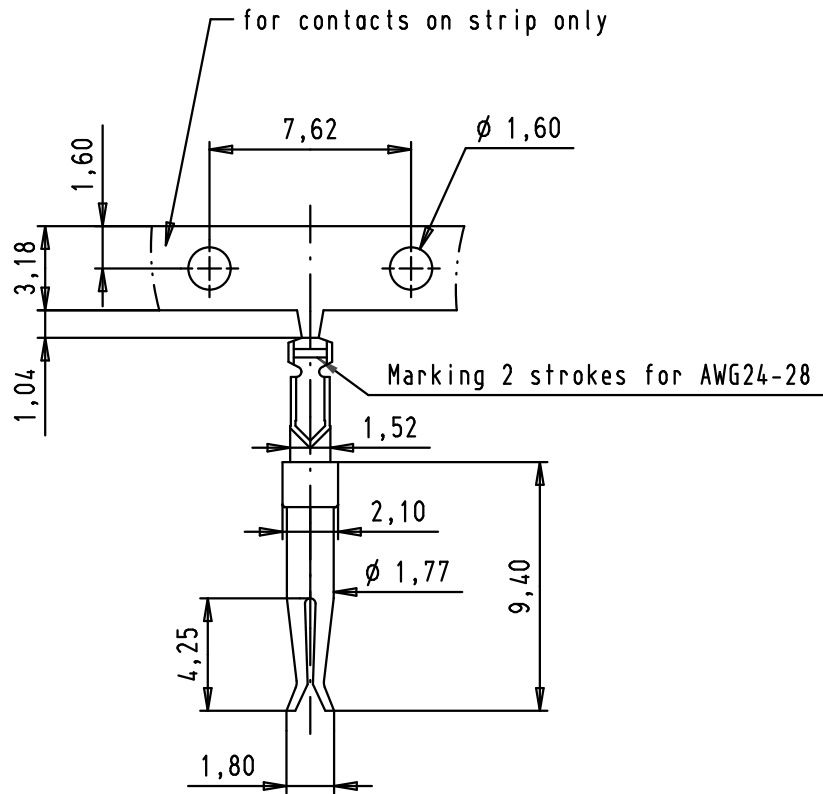
1

D

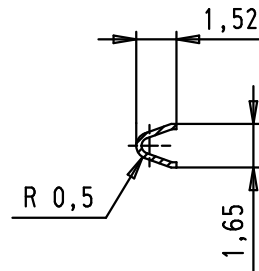
C

B

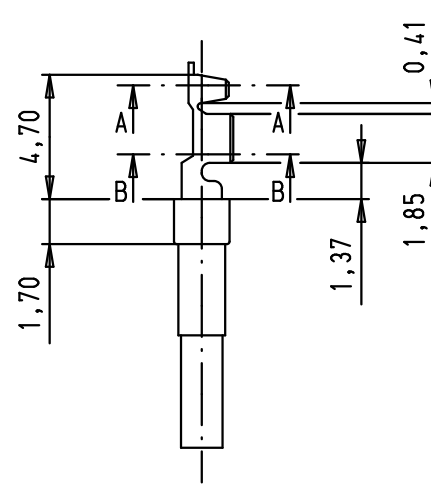
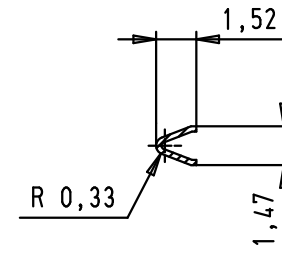
A



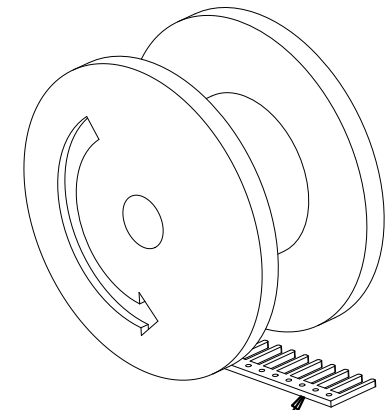
Section A-A



Section B-B





Reel unrolling left



orientation of crimping area

Base material: brass
 Plating: sliding contact selective gold plated over nickel
 nickel plated crimp area
 Number of contacts per reel: 500

				Det.	Name	 All Dim. in mm Orig. Size DIN A 4	D-Sub, stamped female AWG 24-28 crimp contact, reel unrolling left	Maßstab/ Scale 3,5:1	Blatt/ Page 1 / 1
			Detail.	24/03/03	PP				
			Insp.	13/01/12	JB				
			Stand.						
09 67 000 7268	PL2	36288	13/01/12	SD	HARTING EURL F-95972 Paris 	TB 09 67 000 726X Sub.			
09 67 000 7267	PL3	33937	01/03/07	PK					
09 67 000 7266	PL1	31476	24/03/03	PP					
Part number	Performance level	Mod.	Det.	Name					