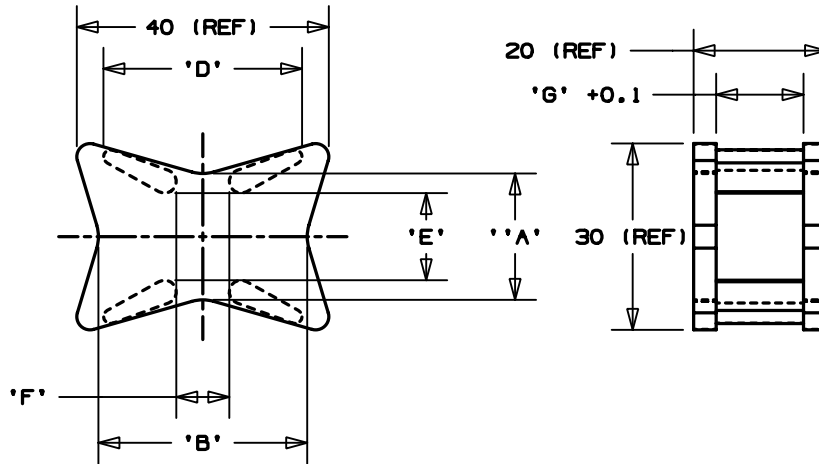


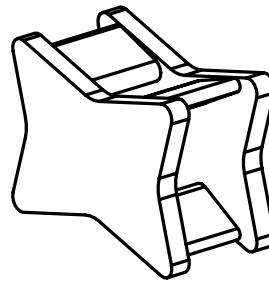
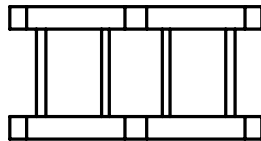
THIS COPY IS PROVIDED ON A RESTRICTED BASIS AND IS NOT TO BE USED IN ANY WAY DETRIMENTAL TO THE INTERESTS OF PANDUIT CORP.

PANDUIT PART NO.	DIMENSIONS							WEIGHT grams / 100 pcs
	'A'	'B'	'C'	'D'	'E'	'F'	'G'	
CSEH15A30-_20	18.6	31	26.8	30	11.6	8	13.2	833
CSEH15A30-_0								
CSEH15A30-_100								



NOTES:

- MATERIAL:**
 -_20 NYLON 6/6
 -_0 NYLON 6/6 UV STABILIZED
 -_100 POLYPROPYLENE UV STABILIZED
 IMPACT MODIFIED
- COLOR:** -_20, -_0, & -_100 BLACK
- FOR USE WITH PANDUIT CABLE TIE TYPE:**
 M- MINATURE I- INTERMEDIATE
 S- STANDARD H- HEAVY
 EH- EXTRA HEAVY
- SEE CURRENT PRICE SHEET FOR PART NUMBER SUFFIX DESIGNATION PACKAGE SIZE AND COLOR.



DIMENSIONS ARE METRIC [mm]	
CND FILENAME/LAYER# G1932BV_PB_CSEH15A30_00	
PANDUIT CORP. TINLEY PARK, ILLINOIS	
SPACER	
UNLESS OTHERWISE SPECIFIED, DIMENSIONAL TOLERANCES ARE: ±0.5mm	UNLESS OTHERWISE SPECIFIED, ALL DIMENSIONS ARE GIVEN IN METRIC, THIRD ANGLE PROJECTION.
DRAWN BY JAD	MAT'L:
DATE 4/28/03	SEE NOTE 1
CHK'D	SCALE NONE
REV	DRAWING NO. GB1932BV
DATE	CND SIZE A
BY	
CHK	

REV	DATE	BY	CHK	DESCRIPTION	ECN	R	CUST	SUP
R	4/28/03	JAD		INITIAL RELEASE	GB1932BV	R		