

PLEASE CHECK WWW.MOLEX.COM FOR LATEST PART INFORMATION

Part Number: [63813-8400](#)
Status: **Active**
Description: Extractor Tool for MOX, 0.63mm Receptacle Crimp Terminals

Documents:

[RoHS Certificate of Compliance \(PDF\)](#)

General

Product Family	Application Tooling
Series	T0201
Function	Extraction
Geographic Area	Global
Level of Automation	Manual
More Detailed Tech Information	applicationtooling@molex.com
Product Name	N/A
Survey	www.molex.com//review/apptool_survey.html
Tool Type	Handtool
UPC	884982141339

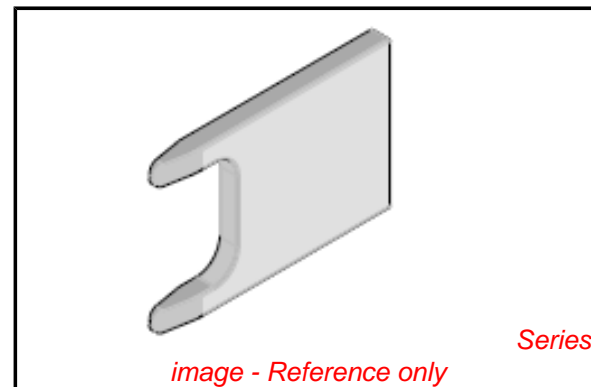
Physical

Net Weight	0.010/mg
------------	----------

Material Info

Reference - Drawing Numbers

Application Tooling Documents	ATS-638138400
-------------------------------	---------------



EU RoHS

China RoHS

Compliance Status

Not Reviewed

REACH SVHC

Not Reviewed

Low-Halogen Status

Not Reviewed

Need more information on product environmental compliance?

Email productcompliance@molex.com
 For a multiple part number RoHS Certificate of Compliance, [click here](#)

Please visit the [Contact Us](#) section for any non-product compliance questions.

Search Parts in this Series

[T0201Series](#)

Use With

[98982](#) 2.54mm Pitch MOX Receptacle Kit, 4 Rows, 40 Circuits