

®

**Thermofit Molded Parts**  
**Specification Control Drawing**  
**Limited Distribution**

Part Number : 209A300  
 Description : Hex Boot

**NOTES**

- All dimensions are in inches.
- Dimensions appearing in table are as follows:  
 a - As Supplied

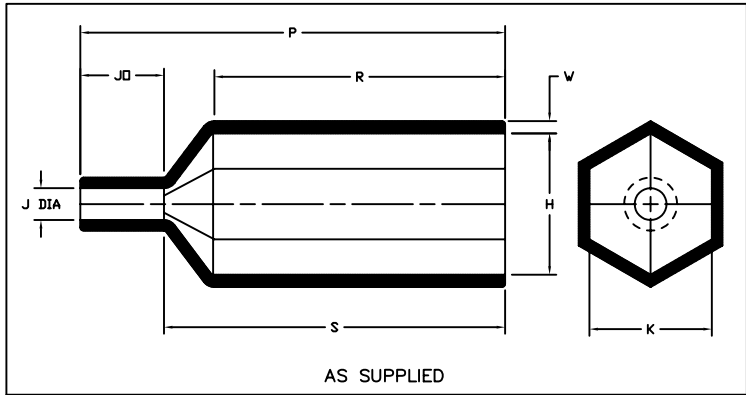


TABLE OF DIMENSIONS								
PART NUMBER	H	J	K	P	R	S	JO	W
	Max a	Min a	Max a	Ref a	+ .30 - .10 a	± .30 a	± .10 a	± .030 a
209A300	1.66	.375	1.44	5.00	3.50	4.00	1.00	.125

*Raychem*

RAYCHEM CORPORATION  
 300 CONSTITUTION DRIVE  
 MENLO PARK, CALIFORNIA 94025

Revision : A  
 Date : 2/10/99

Part Number : 209A300  
 Description : Hex Boot

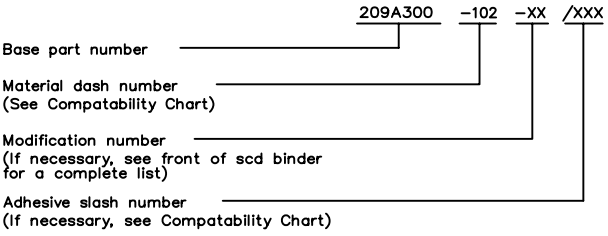
®

**Thermofit Molded Parts**  
**Specification Control Drawing**  
**Limited Distribution**

Part Number : 209A300  
 Description : Hex Boot

COMPATABILITY CHART					
MATERIAL DASH NO.	MATERIAL DESCRIPTION	RT SPEC	COATING SLASH NO.	COATING S NO.	COATING DESCRIPTION
-102	SRA	RT-1178			

**ORDERING INFORMATION**



THIS DRAWING IS SUBJECT TO CHANGE WITHOUT NOTICE; CONSULT YOUR  
 NEAREST FIELD REPRESENTATIVE FOR CURRENT REVISION

**If this document is printed it becomes uncontrolled. Check for the latest revision.**

*Raychem*

RAYCHEM CORPORATION  
 300 CONSTITUTION DRIVE  
 MENLO PARK, CALIFORNIA 94025

Revision : A  
 Date : 2/10/99

Part Number : 209A300  
 Description : Hex Boot