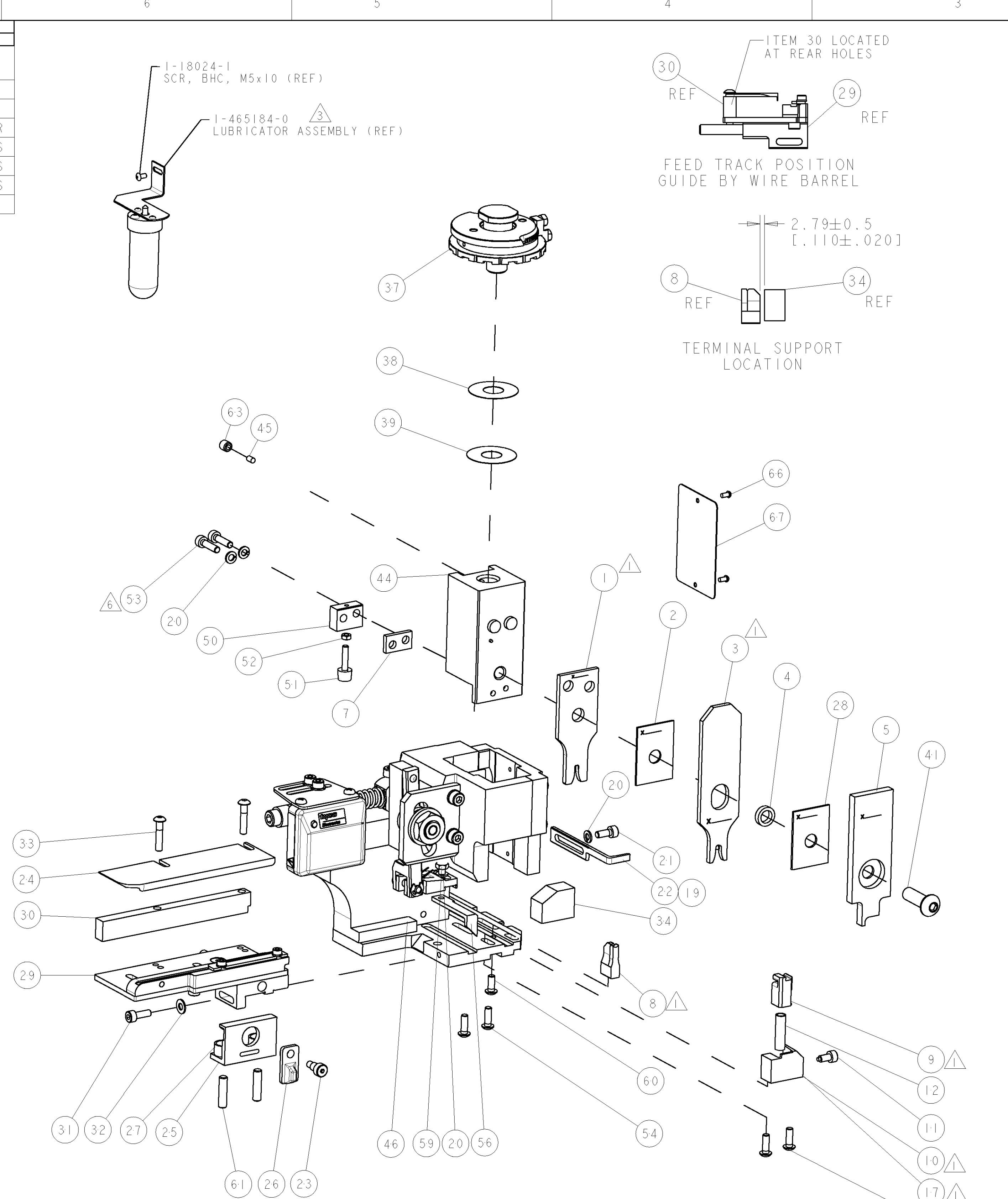


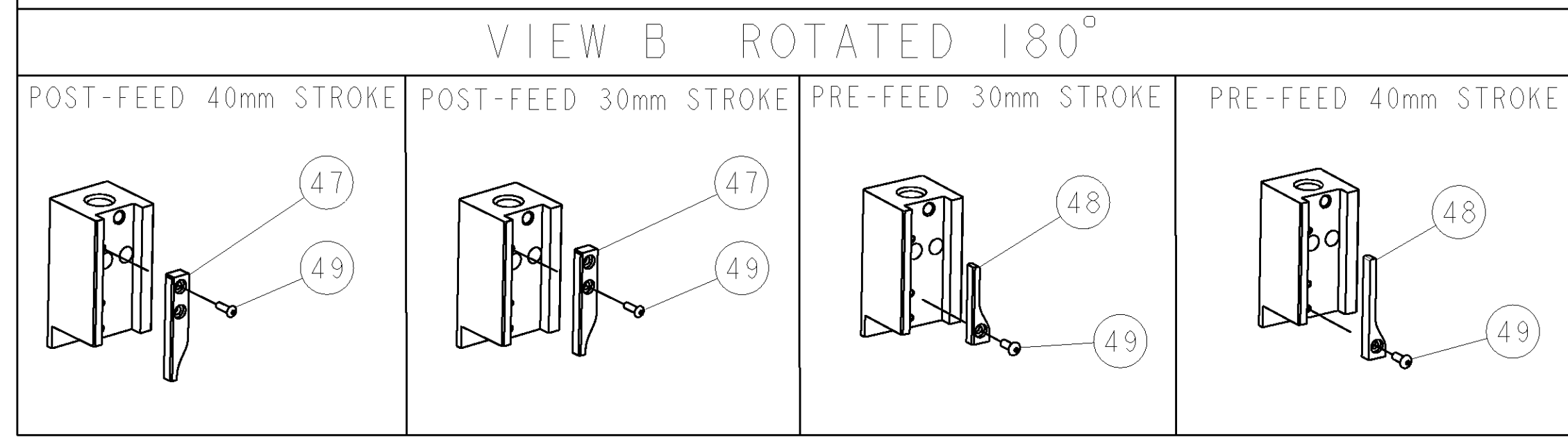
PART NUMBER	REV	TERMINATOR	FEED TYPE	DESCRIPTION
1528694-1	A	LEADMAKER	MECH POST FEED	CUTS CARRIER
1528694-2	A	BENCH	MECH PRE FEED	CUTS CARRIER
1528694-6	A	LEADMAKER	MECH POST FEED	CONTINUOUS CARRIER
7-1528694-1	A	LEADMAKER	MECH POST FEED	-1 AND SPARE PARTS
7-1528694-2	A	BENCH	MECH PRE FEED	-2 AND SPARE PARTS
7-1528694-6	A	LEADMAKER	MECH POST FEED	-6 AND SPARE PARTS
7-1528694-7	A	-	-	SPARE PARTS KIT

CRIMP DATA	GHW/LEAR TERMINAL	KROSCHU CRIMP SPEC
TERMINAL NAME: MDK 3 PLUS		
CRIMP	SIZE	TYPE
WIRE	2.54 [1.00 IN]	F
INSUL	4.06 [1.60 IN]	OV
WIRE STRIP LENGTH		APPL INSTRUCTIONS
4.30-5.10 [1.69-.200 IN]		408-8322 & 408-8490
TERMINAL APPL SPEC		FEED [3.46 [1.530 IN]
TERMINALS APPLIED		
TYCO PN	MANUF'S PN	
1949123-1	26627.331.710	
1949123-2	26627.331.179	
WIRE SIZE	CRIMP HEIGHT	REF SETTING
2.50mm ²	1.60 ±0.05 [1.063 ±.002 IN]	B4
1.50mm ²	1.45 ±0.05 [1.057 ±.002 IN]	C4

- RECOMMENDED SPARE PARTS.
2. GREASE RAM, CAM, CAM FOLLOWER AND FEED ROD LIGHTLY.
3. CERTAIN TERMINALS REQUIRE LUBRICATION. REFER TO THE APPLICATOR INSTRUCTION SHEET FOR MORE INFORMATION.
4. LUBRICATE DAILY PER THE APPLICATOR INSTRUCTION SHEET SUPPLIED WITH THE APPLICATOR.
5. CRIMP DATA SUPPLIED BY KROMBERG & SCHUBERT, BUT ALSO COMPLIES WITH TYCO CALCULATED CRIMP DATA.
6. ITEM 53, CUT TO LENGTH AT ASSEMBLY.



* WARNING
ON INSTALLATION, SET WIRE DISC TO LARGEST WIRE SIZE SETTING. USE OF SETTINGS BELOW MIN. REQUIRED CRIMP HEIGHT SETTING WILL CAUSE DAMAGE TO CRIMP TOOLING.



-77	-76	-72	-71	-6	-2	-1	PART NO	DESCRIPTION	ITEM NO
-	-	-	-	-	-	-	-	-	84
-	-	-	-	-	-	-	-	-	83
-	-	-	-	-	-	-	-	-	82
-	-	-	-	-	-	-	-	-	81
-	-	-	-	-	-	-	-	-	80
-	-	-	-	-	-	-	-	-	79
-	-	-	-	-	-	-	-	-	78
-	-	-	-	-	-	-	-	-	77
-	-	-	-	-	-	-	-	-	76
-	-	-	-	-	-	-	-	-	75
-	-	-	-	-	-	-	-	-	74

SET UP GAGE 458637-3		LOC	DIST	REVISONS					
P	LTR	DESCRIPTION	DATE	BY	APPD				
A		SEE ECO-06-022048	18SEP2006	DP	MC				
-	-	-	-	-	-	-	73		
-	-	-	-	-	-	-	72		
-	-	-	-	-	-	-	71		
-	-	-	-	-	-	-	70		
-	-	-	-	-	-	-	69		
-	-	-	-	-	-	-	68		
-	-	-	-	-	-	-	67		
-	-	-	-	-	-	-	66		
-	-	-	-	-	-	-	65		
-	-	-	-	-	-	-	64		
-	-	-	-	-	-	-	63		
-	-	-	-	-	-	-	62		
-	-	-	-	-	-	-	61		
-	-	-	-	-	-	-	60		
-	-	-	-	-	-	-	59		
-	-	-	-	-	-	-	58		
-	-	-	-	-	-	-	57		
-	-	-	-	-	-	-	56		
-	-	-	-	-	-	-	55		
-	-	-	-	-	-	-	54		
-	-	-	-	-	-	-	53		
-	-	-	-	-	-	-	52		
-	-	-	-	-	-	-	51		
-	-	-	-	-	-	-	50		
-	-	-	-	-	-	-	49		
-	-	-	-	-	-	-	48		
-	-	-	-	-	-	-	47		
-	-	-	-	-	-	-	46		
-	-	-	-	-	-	-	45		
-	-	-	-	-	-	-	44		
-	-	-	-	-	-	-	43		
-	-	-	-	-	-	-	42		
-	-	-	-	-	-	-	41		
-	-	-	-	-	-	-	40		
-	-	-	-	-	-	-	39		
-	-	-	-	-	-	-	38		
-	-	-	-	-	-	-	37		
-	-	-	-	-	-	-	36		
-	-	-	-	-	-	-	35		
-	-	-	-	-	-	-	34		
-	-	-	-	-	-	-	33		
-	-	-	-	-	-	-	32		
-	-	-	-	-	-	-	31		
-	-	-	-	-	-	-	30		
-	-	-	-	-	-	-	29		
-	-	-	-	-	-	-	28		
-	-	-	-	-	-	-	27		
-	-	-	-	-	-	-	26		
-	-	-	-	-	-	-	25		
-	-	-	-	-	-	-	24		
-	-	-	-	-	-	-	23		
-	-	-	-	-	-	-	22		
-	-	-	-	-	-	-	21		
-	-	-	-	-	-	-	20		
-	-	-	-	-	-	-	19		
-	-	-	-	-	-	-	18		
-	-	-	-	-	-	-	17		
-	-	-	-	-	-	-	16		
-	-	-	-	-	-	-	15		
-	-	-	-	-	-	-	14		
-	-	-	-	-	-	-	13		
-	-	-	-	-	-	-	12		
-	-	-	-	-	-	-	11		
-	-	-	-	-	-	-	10		
-	-	-	-	-	-	-	9		
-	-	-	-	-	-	-	8		
-	-	-	-	-	-	-	7		
-	-	-	-	-	-	-	6		
-	-	-	-	-	-	-	5		
-	-	-	-	-	-	-	4		
-	-	-	-	-	-	-	3		
-	-	-	-	-	-	-	2		
-	-	-	-	-	-	-	1		
-77	-76	-72	-71	-6	-2	-1	PART NO	DESCRIPTION	ITEM NO
DIMENSIONS:		TOLERANCES UNLESS OTHERWISE SPECIFIED:		DWN		DATE		Tyco Electronics Harrisburg, PA 17105-3608	
mm [IN]		0 PLC ±		M. CLIFFORD		11AUG2006		NAME	
1 PLC ±		1 PLC ±		PRODUCT SPEC		11AUG2006		FINE ADJUST SIDE FEED HDI APPLICATOR	
2 PLC ±		2 PLC ±		APPLICATION SPEC		See Table		SIZE	
3 PLC ±		3 PLC ±		WEIGHT		A1		00779	
4 PLC ±		4 PLC ±		CUSTOMER DRAWING		SCALE		3:5	
ANGLES ±		FINISH		SHEET		1		OF	
				REV		A			