

MODEL:

# SR42UBDPWD

## SmartRack® Deep & Wide Rack Enclosure



42 Rack Units



3000 lb.  
Stationary  
Load Capacity



2250 lb.  
Rolling  
Load Capacity



Heavy-Duty  
Casters



Locking Doors &  
Side Panels



Standard  
19-inch  
Rack Width



Toolless  
Mounting Slots



Adjustable  
Rails with  
Easy-View  
Depth Index



Airflow  
Exceeds  
Server OEM  
Requirements



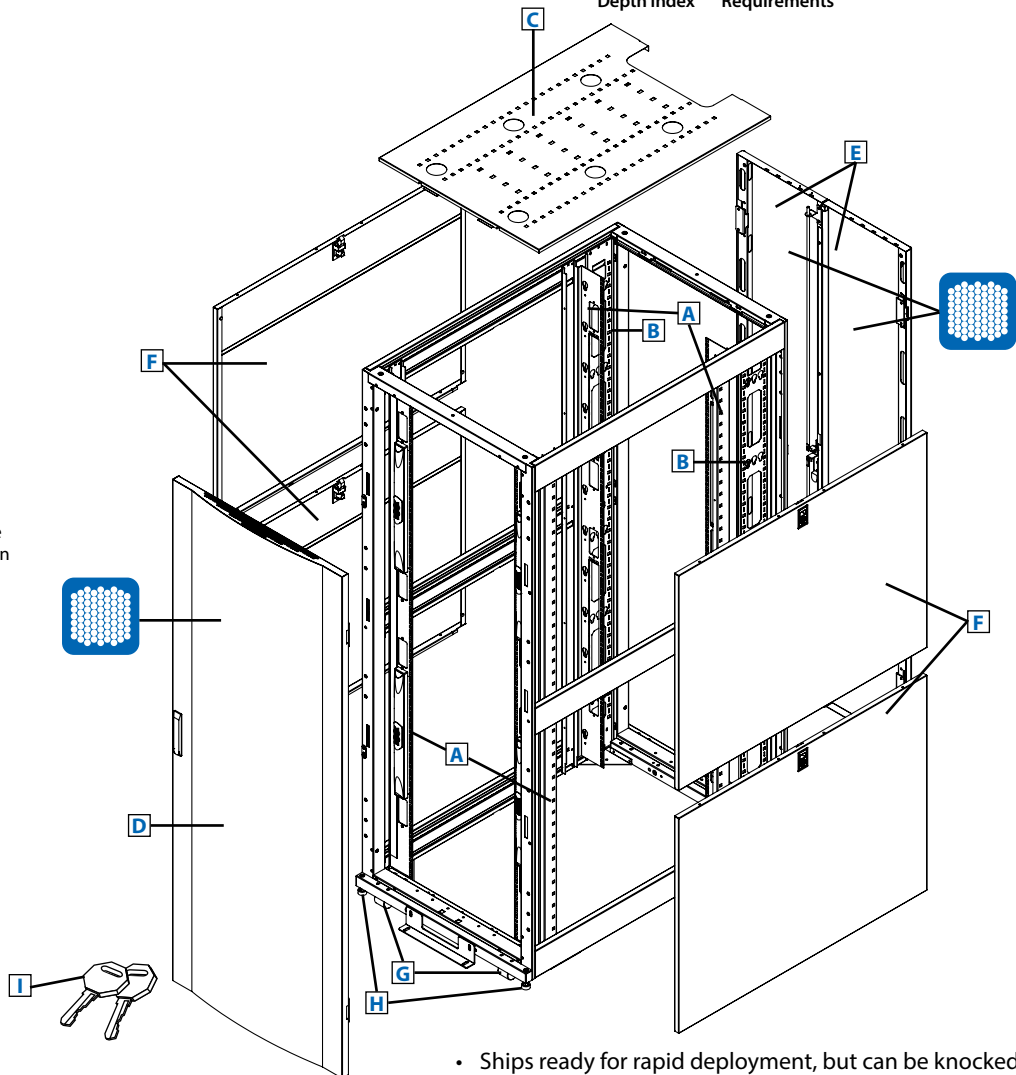
Integrated  
Baying Tabs



Square Hole  
Mounting

- A** Adjustable Mounting Rails
- B** Adjustable PDU Mounting Rails with Toolless Mounting Slots (2 rails hold up to 4 vertical PDUs)
- C** Roof Panel (Removable)
- D** Front Door (Lockable/Removable/Reversible)
- E** Split Rear Doors (2) (Lockable/Removable)
- F** Side Panels (4) (Lockable/Removable)
- G** Heavy-Duty Casters (4)
- H** Heavy-Duty Levelers (4)
- I** Keys (For doors and side panels.)

Also Includes: Owner's manual, 2 shipping/stabilizing brackets and rackmount equipment mounting hardware (50 cage nuts, 50 mounting screws, 50 nylon cup washers).



- Ships ready for rapid deployment, but can be knocked down for easy reassembly in confined spaces
- Modular design optimized for quick configuration and reconfiguration
- Ideal for rack-mount server, network and telecom applications



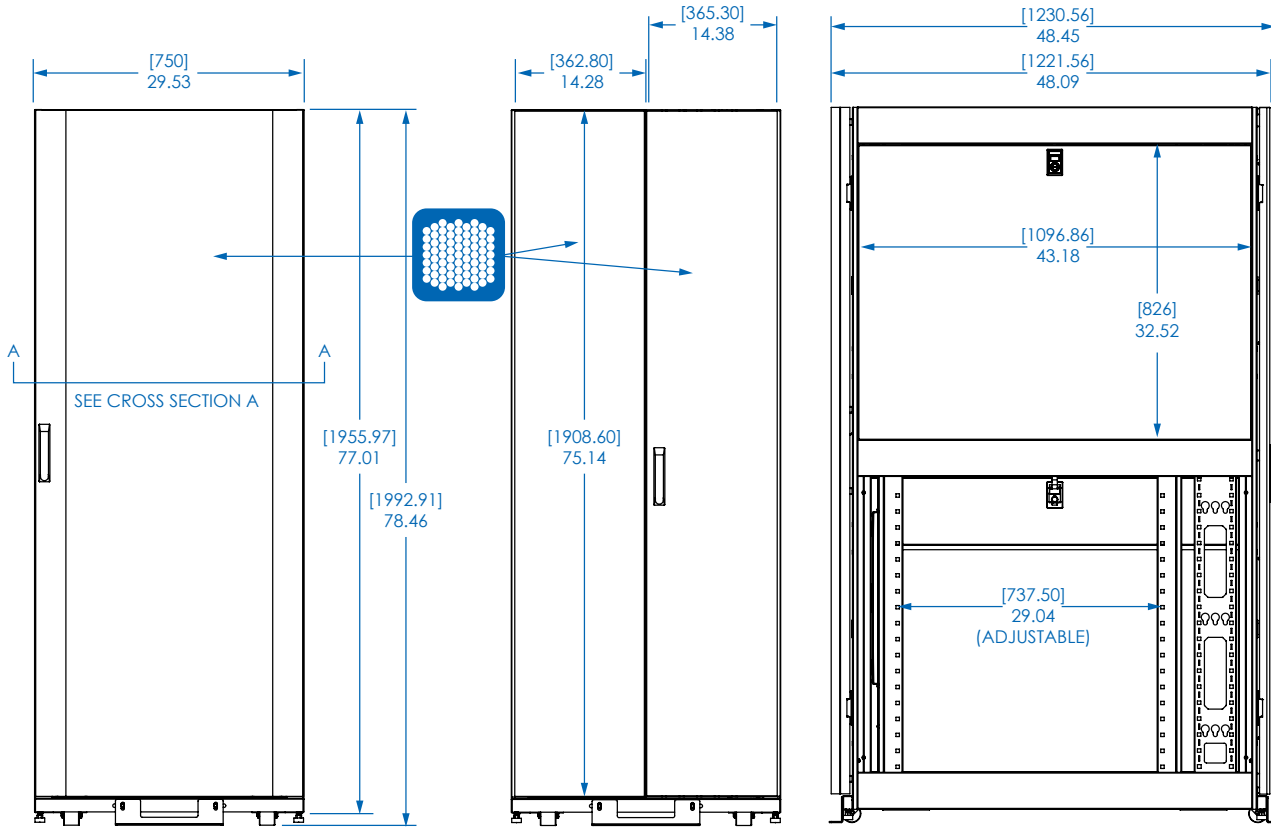
### Specifications

Model	SR42UBDPWD
Rack Spaces	42U
Stationary Load Rating	3000 lb. / 1363 kg
Rolling Load Rating	2250 lb. / 1022 kg
Unit Dimensions (H x W x D)	78.5 x 29.5 x 48.5 in. / 1994 x 750 x 1230 mm
Shipping Dimensions (H x W x D)	85 x 32 x 54 in. / 2159 x 813 x 1372 mm
Unit Weight	342 lb. / 155 kg
Shipping Weight	404 lb. / 183 kg
Certifications	EIA-310-E, IEC 60297-3-100, DIN 41494, UL 60950, RoHS, NOM, PCI-DSS

SEE NEXT PAGE FOR DETAILED UNIT MEASUREMENTS



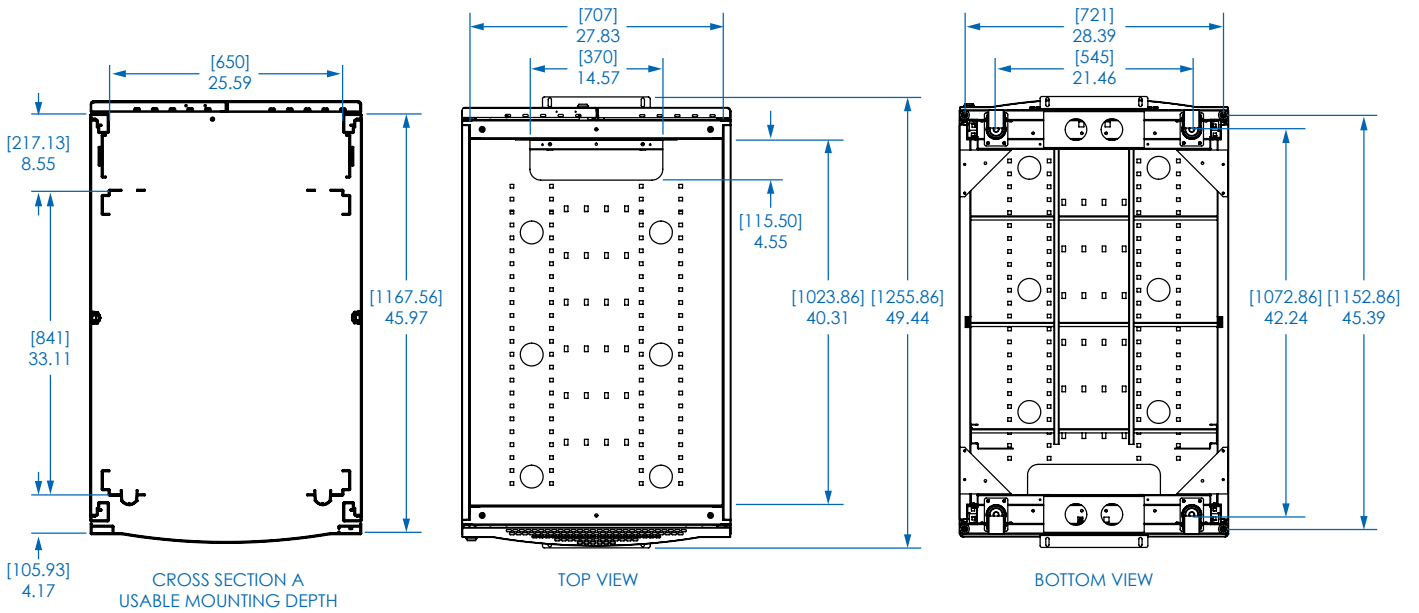
1111 W. 35th Street  
Chicago, IL 60609 USA  
773.869.1234  
www.tripplite.com



FRONT VIEW

REAR VIEW

SIDE VIEW



CROSS SECTION A  
USABLE MOUNTING DEPTH

TOP VIEW

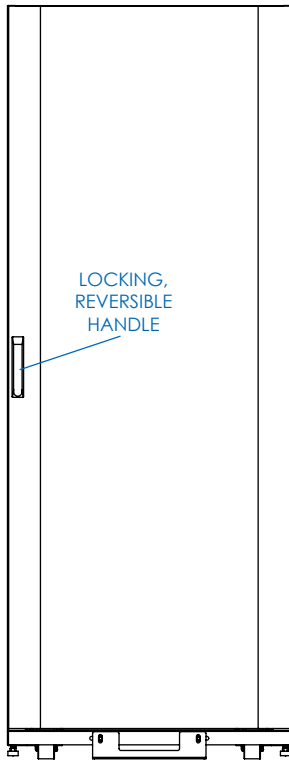
BOTTOM VIEW

MODEL:  
**SR42UBDPWD**



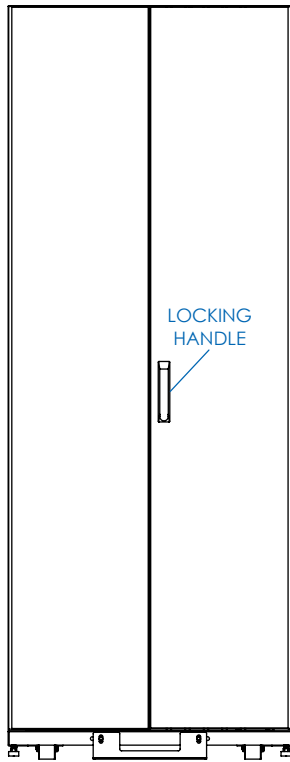
Dimensions: [mm] INCHES

Tripp Lite has a policy of continuous improvement. Specifications are subject to change without notice.



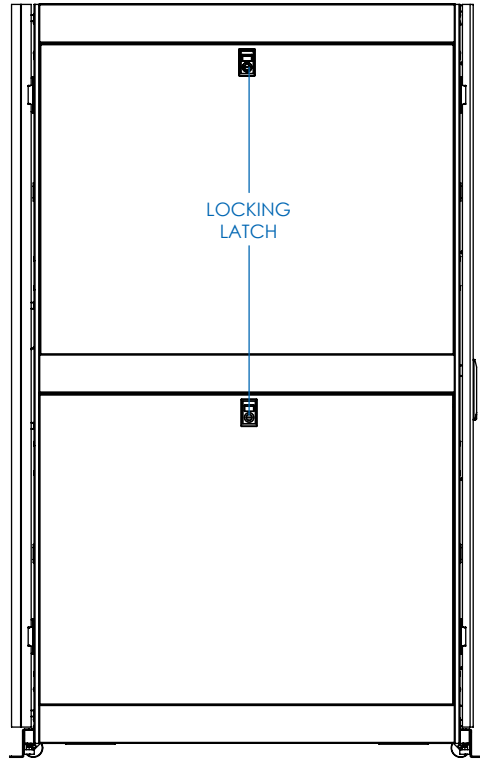
LOCKING,  
REVERSIBLE  
HANDLE

FRONT VIEW



LOCKING  
HANDLE

REAR VIEW



LOCKING  
LATCH

SIDE VIEW

Dimensions: [mm] INCHES

Tripp Lite has a policy of continuous improvement. Specifications are subject to change without notice.

MODEL:  
**SR42UBDPWD**

**TRIPP·LITE**

1111 W. 35th Street  
Chicago, IL 60609 USA  
773.869.1234

[www.triplite.com](http://www.triplite.com)