

IBC04-36S12

1/8th brick bus converter

Data Sheet

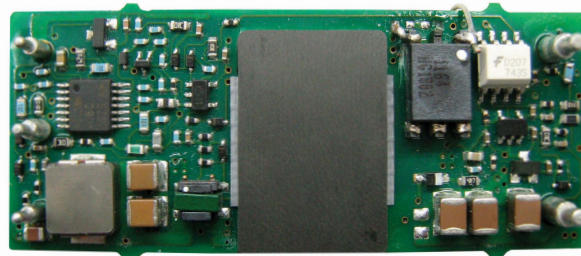
Total Power: 50 W
Input Voltage: 18 - 60 V
Single Output: 12 V

SPECIAL FEATURES

- Ultra wide input range
- Optimised for contact cooling
- Low ripple and noise
- Fixed switching frequency
- High capacitive load capability
- Pre-bias start-up capability
- Basic insulation system
- Through hole termination
- Open frame construction

SAFETY

- UL 60950-1
- CE Mark



The IBC04-36S12 is the latest wide-range input isolated DCDC converter specifically designed to supply non-isolated converter architectures. It operates from an ultra-wide input range of 18 Vdc to 60 Vdc and provides a regulated output voltage of 12 V. The output is rated to a power level up to 50 W.

Its protection features include non-latching OCP and OTP with non-latching OVP. It also has an enable pin on the primary side of the converter. The unit is an open frame design that is optimised for either contact-cooled applications or forced airflow applications.

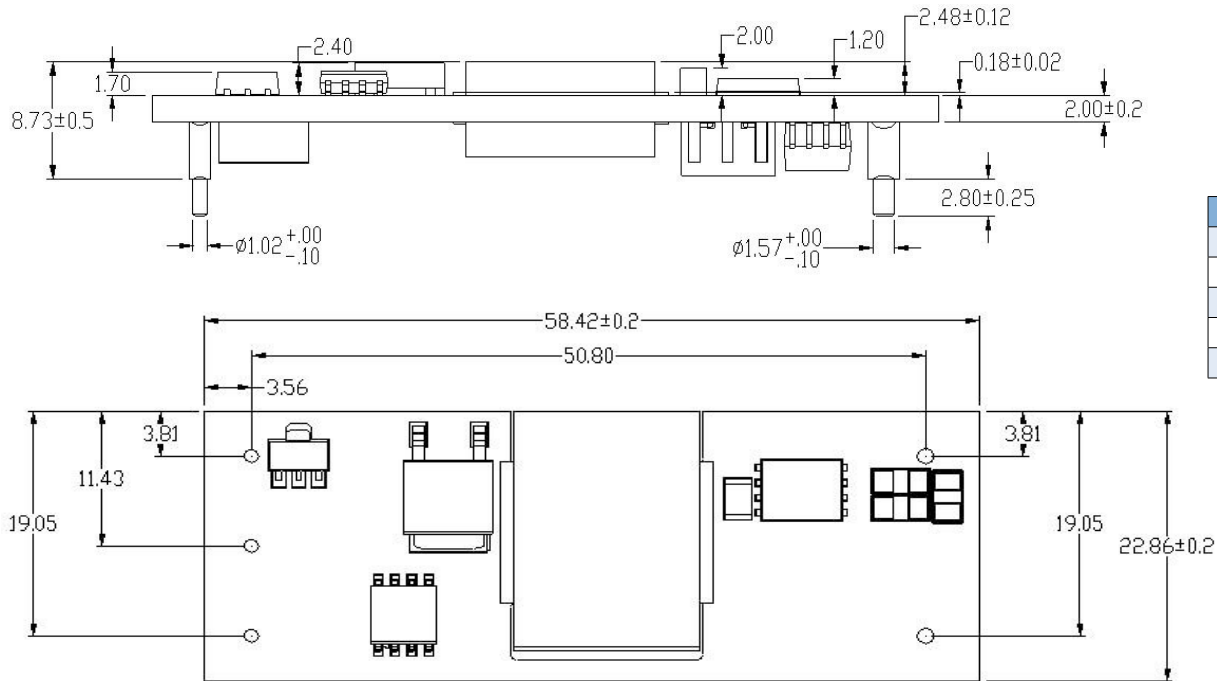
Electrical Specifications

Input	
Input range:	18 Vdc to 60 Vdc
Input surge:	100 V for 100 mSec
Efficiency:	92% typ (> 89.5% @ 2.8 A out - 4 A out & 18 Vin - 55 Vin)
Control	
Enable:	TTL compatible positive or negative enable
Output	
Output voltage:	12 Vdc
Output current:	0 A to 4 A
Ripple and noise:	50 mV rms, 200 mV pk-pk
Regulation (total error band):	±5% Vout
Over current protection:	5 A
Over voltage protection:	15 V
Output overshoot:	10% (Iout = Imax, Temperature = 25 °C)
Over temp protection:	115 °C Typical
Output capacitance:	0 uF to 2000 uF
Switching frequency:	Fixed switching frequency 300 Khz Nominal (265 Khz min to 335 Khz Max at 25 °C)
Isolation voltage:	1500 Vdc
Transient response:	600 mV deviation 600 uS recovery (25% - 75% Iout)
UVLO Turn-on:	18 Vdc
UVLO Turn-off:	16 Vdc

Environmental Specifications

Storage temperature:	-40 to +105 °C
Ambient operating temp:	-40 to +85 °C
MTBF:	>1 Million hours target

Mechanical Specifications



Pin #	Designation
PIN 1	+V _{IN}
PIN 2	Enable
PIN 3	-V _{IN}
PIN 4	-V _{OUT}
PIN 5	+V _{OUT}

Ordering Information

Input Voltage	Output Voltage	Output Current	Efficiency	Part Number
18 - 60 Vdc	12 V	4 A	91%	IBC04-36S12 (-SJ/-J)

Note:

- Standard converter is negative enable
- '-SJ' = surface mount option RoHS-6 compliant
- '-J' = RoHS-6 compliant

Notes

- 20 Mhz bandwidth. External 100 uF electrical capacitor and 1 uF ceramic capacitor placed across +Vout and -Vout; 150 uF e-cap or equivalent placed across +Vin and -Vin.
- Efficiency measurements taken at full load and nominal line and Tamb = 25 °C
- All specifications taken at nominal line, full load and Tamb = 25 °C unless otherwise noted
- Mechanical dimensions are for reference only. Dimensions are in MM. Mechanical tolerance = ±0.5 mm
- Technical reference notes should be consulted for detailed information when available.
- All specifications are subject to change without notice
- Warranty 2 years
- The through-hole terminated modules are intended for wave-soldering process – special request for other manufacturing processes to be made to Artesyn

WORLDWIDE OFFICES

Americas

2900 S.Diablo Way
Tempe, AZ 85282
USA
+1 888 412 7832

Europe (UK)

Waterfront Business Park
Merry Hill, Dudley
West Midlands, DY5 1LX
United Kingdom
+44 (0) 1384 842 211

Asia (HK)

14/F, Lu Plaza
2 Wing Yip Street
Kwun Tong, Kowloon
Hong Kong
+852 2176 3333

ARTESYN
EMBEDDED TECHNOLOGIES

www.artesyn.com

While every precaution has been taken to ensure accuracy and completeness in this literature, Artesyn Embedded Technologies assumes no responsibility, and disclaims all liability for damages resulting from use of this information or for any errors or omissions. Artesyn Embedded Technologies, Artesyn and the Artesyn Embedded Technologies logo are trademarks and service marks of Artesyn Embedded Technologies, Inc. All other names and logos referred to are trade names, trademarks, or registered trademarks of their respective owners. © 2014 Artesyn Embedded Technologies, Inc.

For more information: www.artesyn.com/power
For support: productsupport.ep@artesyn.com