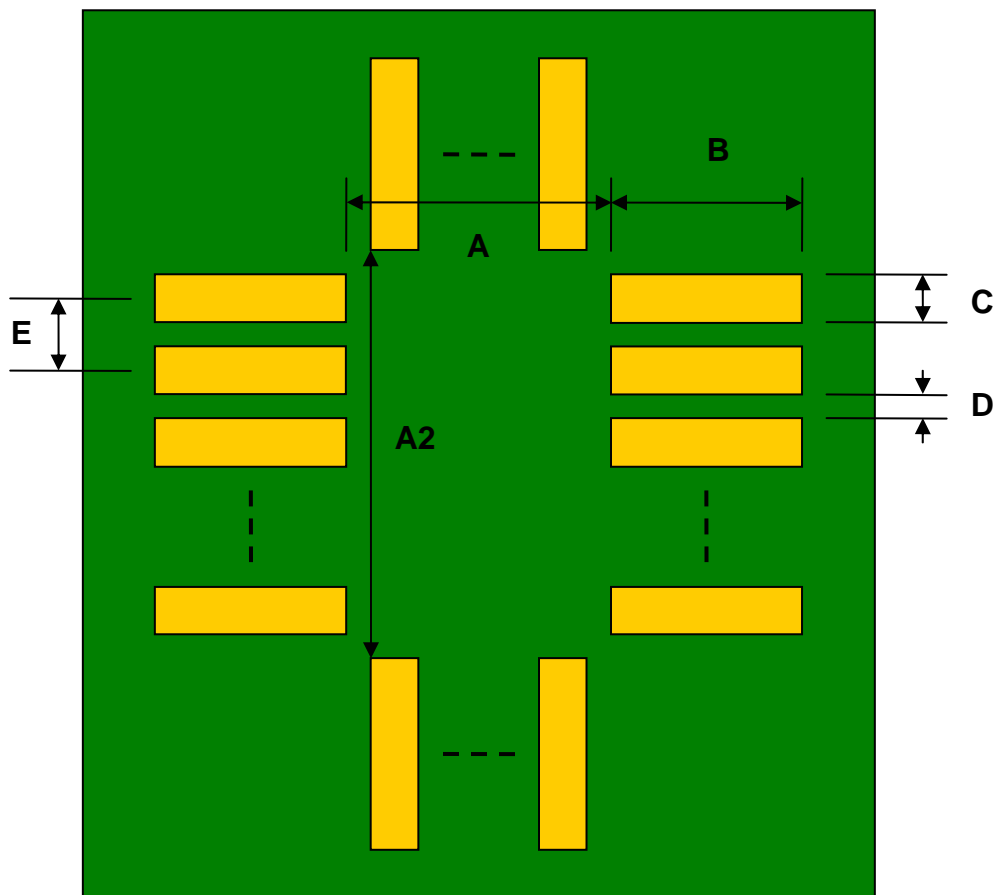


LLP-20 to DIP-20 SMT Adapter (0.4 mm pitch, 3 x 2.5 mm body)

REF.	DIMENSIONS					
	mm			inches		
	MIN.	TYP.	MAX.	MIN.	TYP.	MAX.
A		1.70				
A2		2.20				
B		2.00				
C		0.20				
D		0.20				
E		0.40				
F					0.300	
G					0.100	
H					0.025	

Top View (SMT Footprint)



(Representative drawing only - not to scale)

Bottom View (DIP Pins)



(Representative drawing only - not to scale)

Side View (DIP Pins)



(Representative drawing only - not to scale)