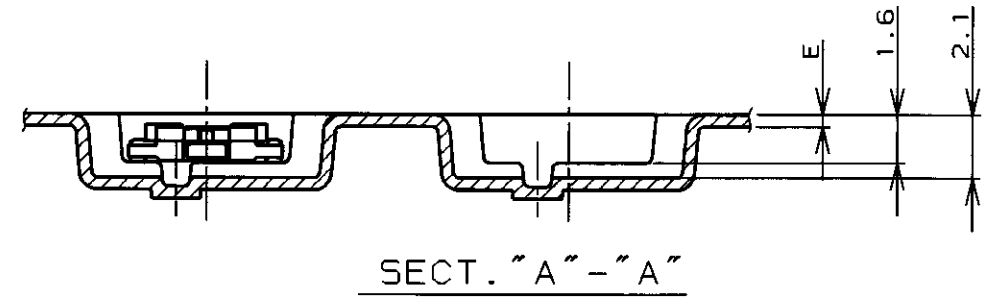
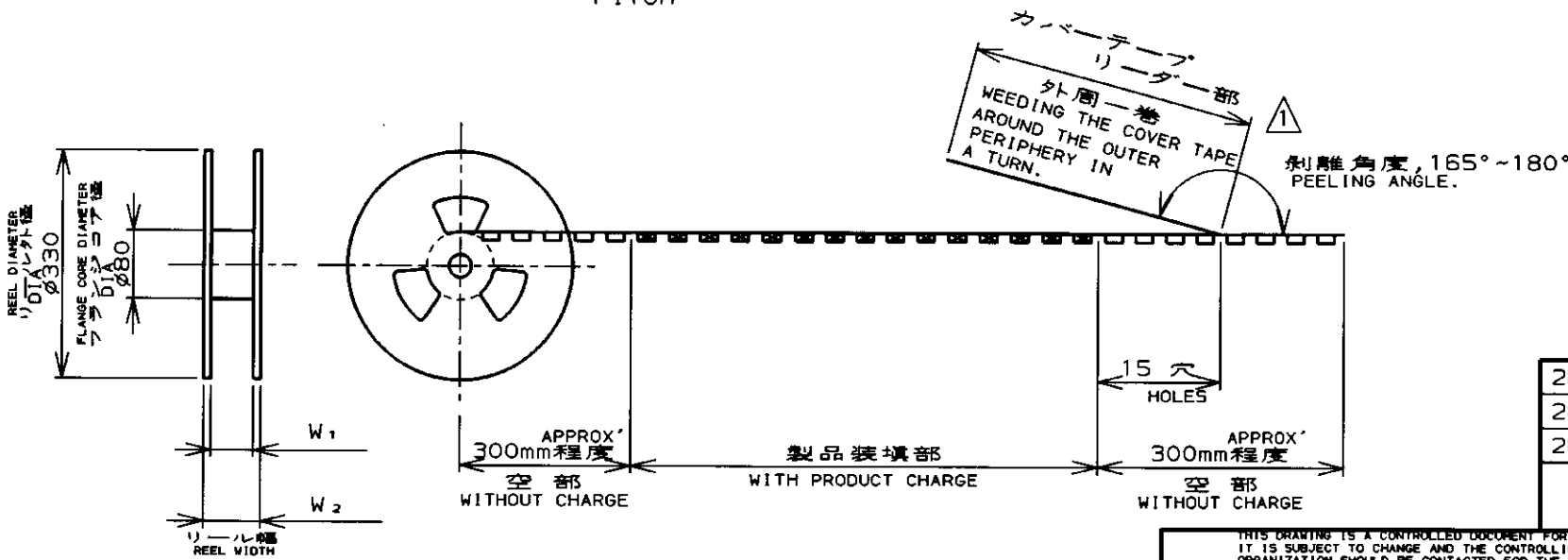
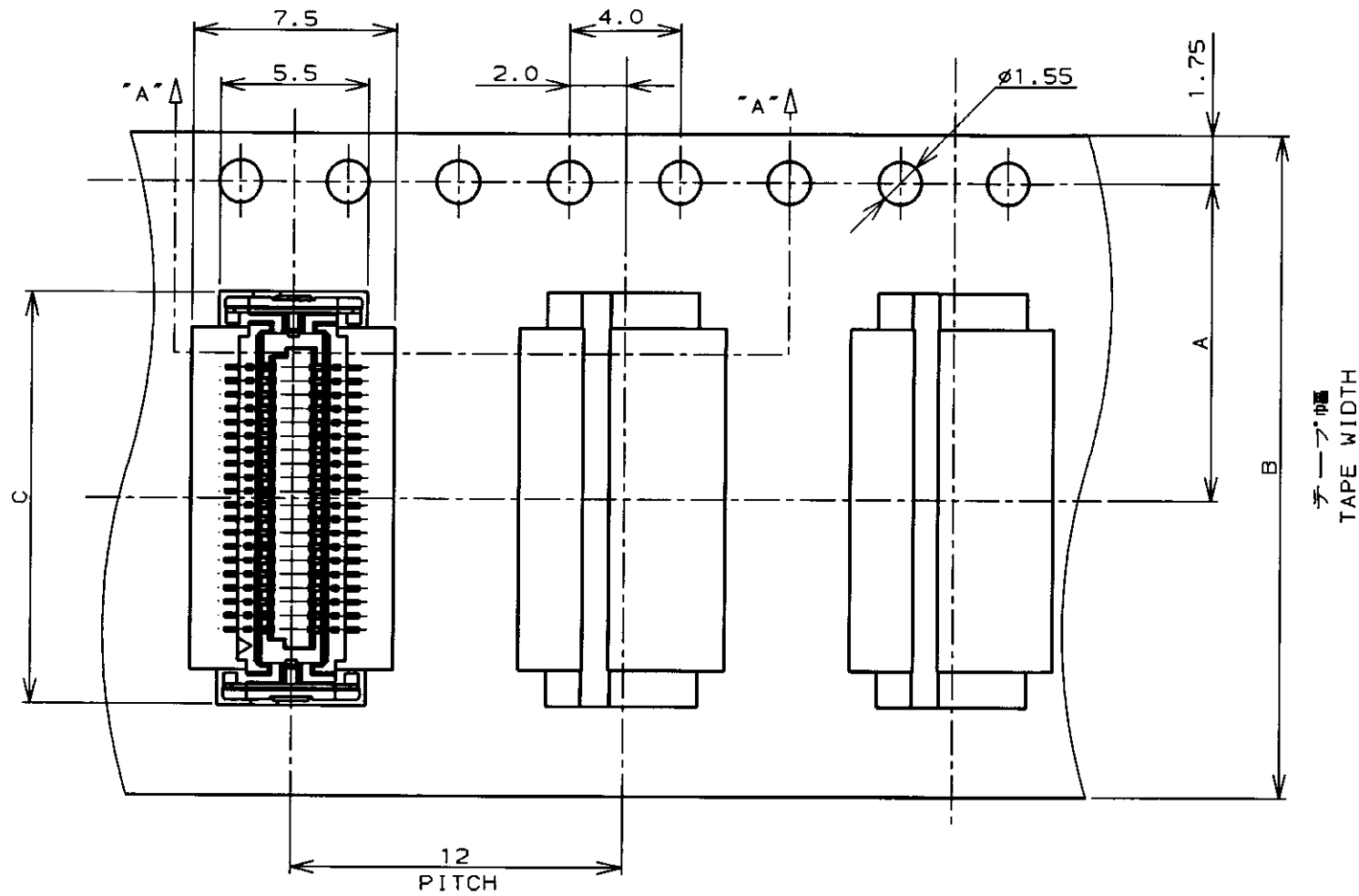


LOC		DIST		REVISIONS						
J				P	LTR	DESCRIPTION	ECN	DATE	DWN	APVD
					0	RELEASED	FJ00-5477-96	12/5/96	S.K.	S.K.



28.4	24.4	0.4	15.0	24	11.5	1500	40	4-353686-0	4-353687-0
28.4	24.4	0.4	12.5	24	11.5	1500	30	3-353686-0	3-353687-0
28.4	24.4	0.4	10.0	24	11.5	1500	20	2-353686-0	2-353687-0
W2	W1	E	C	B	A	数量 (ヶ) QTY/REEL	極数 Pos.	コネクタ型番 (シラ状) CONNECTOR P/N (L/P)	リール巻 コネクタ型番 TAPING P/M

THIS DRAWING IS A CONTROLLED DOCUMENT FOR AMP INCORPORATED. IT IS SUBJECT TO CHANGE AND THE CONTROLLING ENGINEERING ORGANIZATION SHOULD BE CONTACTED FOR THE LATEST REVISION.

AMP 日本エー・エム・ピー株式会社 Kawasaki, Japan

ON TAPING (EMBOSS)  
0.5mm PITCH FS CONN. RECEPTACLE ASSEMBLY WITH KEY WITHOUT BOSS & POLYIMIDE FILM

DIMENSIONS: 単位: 概 mm

TOLERANCES UNLESS OTHERWISE SPECIFIED

一般公差  
10% :  $\pm 0.2$   
30% :  $\pm 0.25$   
100% :  $\pm 0.3$   
ANGLE :  $\pm 3^\circ$

MATERIAL 材料

FINISH 仕上

APVD: S. Kajinuma 12/5/96  
CHK: K. Asahara 12/5/96  
S. Kobayashi 12/5/96

PRODUCT SPEC 製品規格

APPLICATION SPEC 取付適用規格

WEIGHT

CUSTOMER DRAWING

SIZE: A3 CAGE CODE: 00779 DRAWING NO: 353687

SCALE: 尺度 SHEET: 1 OF 1 REV: 0