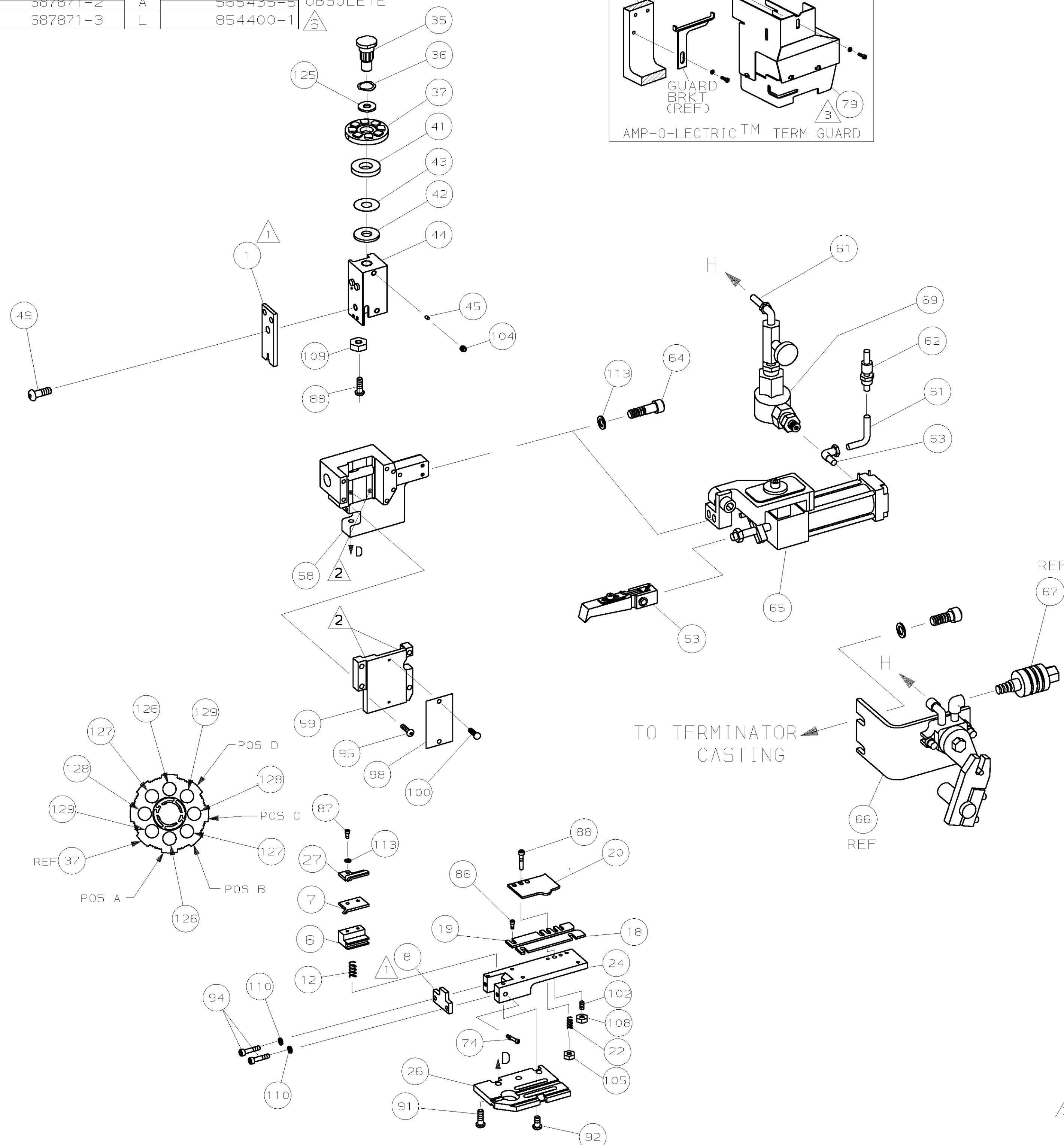
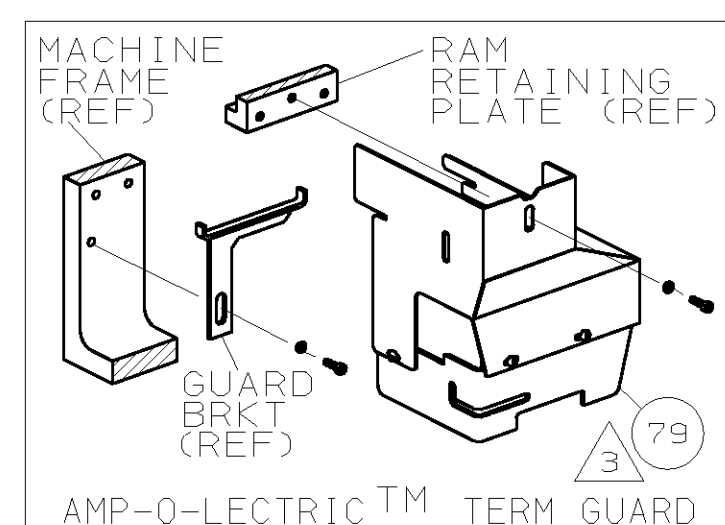


PART NUMBER	REV	FIRST USED
687871-1	M	565435-5
687871-2	A	565435-5
687871-3	L	854400-1

OBSOLETE



- 1 RECOMMENDED SPARE PARTS.
- 2 GREASE LIGHTLY.
- 3 GUARD MUST BE IN PLACE WHEN OPERATING APPLICATOR IN A BENCH MACHINE.
- 4 SEE DRAWING FOR COMPONENTS
- 5. SET UP WIRE ONLY.
 PAD A, (2) 16AWG.
 PAD B, (1) 16AWG + (1) 18AWG.
 PAD C, (2) 18AWG.
 PAD D, (2) 20AWG.
- 6 SINGLE WIRE ONLY

TERMINAL NAME: THRU SPLICE		CRIMPING DATA			
		PAD LTR	CRIMP HEIGHT	WIRE SIZE	
	40504	A	.087 ±.002	5000-5400 CMA	
	40868	B	.082 ±.002	4000-4800 CMA	
	40881	C	.077 ±.002	3000-3800 CMA	
	40933	D	.072 ±.002	2000-2800 CMA	
	41132	CRIMP	SIZE	TYPE	RANGE
	41397	WIRE	.120	F	2048-5250 CMA
	42262	INSUL	-	-	-
	42931	FEED	APPL INST	SET UP GAGE	LAYOUT
	61492	.202	408-8039	458638-1	-
	281174	WIRE STRIP LENGTH	.192-.232		

QTY	REV	U/M	DESCRIPTION	ITEM NO			
2	-	2	-	C	8-354778-5	PIN, WIRE DISC (.2920)D	129
2	-	2	-	C	7-354778-5	PIN, WIRE DISC (.2870)C	128
2	-	2	-	C	6-354778-5	PIN, WIRE DISC (.2820)B	127
2	-	2	-	C	5-354778-5	PIN, WIRE DISC (.2770)A	126
1	-	1	-	A	986950-1	WASHER, FLAT PRECISION	125
							124
							123
							122
							121
							120
							119
							118
							117
							116
							115
							114
2	-	2	-	A	21024-3	WASHER, LOCK (NO 6) STRIPPER & SHEAR	113
							112
							111
2	-	2	-	A	21024-4	WASHER, LOCK (NO. 8) SHEAR BL	110
1	-	1	-	A	21019-1	NUT, HEX (1/4-20) RAM	109
2	-	2	-	A	21018-6	NUT, HEX (8-32) DRAG	108
							107
							106
1	-	1	-	A	21022-4	NUT, HEX (1/4-20) DRAG	105
1	-	1	-	A	21009-2	SCR, SKT SET (1/4-20X.25) RAM	104
							103
2	-	2	-	A	5-21061-5	SCR, SKT SET (8-32X.88) DRAG	102
							101
2	-	2	-	A	21017-2	SCR, DRIVE (#2x.19) ID PLATE	100
							99
1	-	1	-	B	464249-1	PLATE, IDENTIFICATION	98
							97
							96
4	-	4	-	A	3-21000-9	SCR, SHC (10-32X1.00)	95
4	-	4	-	A	2-21000-9	SCR, SHC (8-32X.75) CAP	94
							93
2	-	2	-	A	3-21002-3	SCR, BHC (1/4-20X.50) ST 6D PL	92
3	-	3	-	A	2-22733-8	SCR, BHC (1/4-20X.62) H5G	91
							90
							89
2	-	2	-	A	21001-7	SCR, SHC (1/4-20X 1.25) DRAG	88
2	-	2	-	A	2-21000-0	SCR, SHC (6-32X.50) SLUG BLADE	87
4	-	4	-	A	1-21002-6	SCR, SHC (6-32X.25) STRIP GUIDE	86
							85
							84
							83
							82
							81
							80
-	-	1	-	A	463924-1	GUARD ASSY	79
							78
							77
							76
							75
1	-	1	-	A	690461-4	SCREW, SHEAR STOP	74
							73
							72
							71

QTY	REV	U/M	DESCRIPTION	ITEM NO
-3	-2	-1	U/M	DWG SIZE
REVISION OF EACH ASSY NO (WHEN BLANK, USE DWG REVISION)				
PARTS LIST				

QTY	REV	U/M	DESCRIPTION	ITEM NO			
-1	-	BENCH MODEL K	AIRFEED	70			
-2	-	BENCH MODEL K	AIRFEED	69			
-3	-	LEADMAKER	AIRFEED	68			
-	-	1	-	C	692655-5	AIR FEED VALVE ASSY	67
-	-	REF	-	A	24042-2	VALVE, SHUT OFF	66
-	-	REF	-	C	692655-6	AIR FEED VALVE ASSY	65
1	-	1	-	B	460277-1	AIR FEED ASSY	64
2	-	2	-	A	3-21000-9	SCR, SHC 10-32X1.00 AIR ASSY	63
1	-	-	-	A	22294-6	ELBOW, TUBING 1/8NPT - 1/4 T	62
1	-	-	-	A	23238-1	QUICK DISCONNECT	61
12.00	-	-	IN	A	27319-4	TUBING, POLY-FLO Ø.25	60
1	-	1	-	C	458408-1	CAP, RAM	59
1	-	1	-	D	458414-1	HOUSING	58
							57
							56
							55
							54
1	-	1	-	B	460680-1	FEED FINGER ASSY	53
							52
							51
							50
1	-	1	-	A	7-21002-7	BOLT, CRIMPER (5/16-24X.75)	49
							48
							47
							46
1	-	1	-	A	690191-1	PLUG, NYLON	45
1	-	1	-	C	458413-1	RAM	44
1	-	1	-	A	690125-1	WASHER, LAMINATED	43
1	-	1	-	A	690124-1	WASHER, RAM	42
1	-	1	-	A	690223-2	SPACER, INSULATION DISC	41
							40
							39
							38
1	-	1	-	D	354777-1	WIRE DISC, PLASTIC	37
1	-	1	-	A	22480-5	WASHER, SPRING	36
1	-	1	-	B	690212-1	POST, RAM	35
							34
							33
							32
							31
							30
							29
							28
1	-	1	-	A	458405-1	STRIPPER	27
1	-	1	-	D	458411-1	PLATE, BASE	26
							25
1	-	1	-	B	458412-1	PLATE, STRIP GUIDE	24
							23
1	-	1	-	A	2-22283-9	SPRING, DRAG	22
							21
1	-	1	-	A	458403-1	DRAG, STOCK	20
1	-	1	-	B	458406-2	GUIDE, STRIP (REAR)	19
1	-	1	-	C	458404-2	GUIDE, STRIP (FRONT)	18
							17
							16
							15
							14
							13
1	-	1	-	A	6-22282-8	SPRING, SHEAR HOLDER	12
							11
							10
							9
1	-	1	-	D	458407-2	ANVIL	8
1	-	1	-	B	458410-2	BLADE, SLUG	7
1	-	1	-	D	458409-2	HOLD DOWN, TERMINAL	6
							5
							4
							3
							2
1	-	1	-	C	1-456409-0	CRIMPER, WIRE	1

QTY	REV	U/M	DESCRIPTION	ITEM NO
-3	-2	-1	U/M	DWG SIZE
REVISION OF EACH ASSY NO (WHEN BLANK, USE DWG REVISION)				
PARTS LIST				

THIS DRAWING IS UNRELEASED. RELEASED FOR PUBLICATION BY AMP INCORPORATED. ALL RIGHTS RESERVED. COPYRIGHT 19

LOC A
66

DIMENSIONS IN INCHES. DO NOT SCALE PRINT. TOLERANCES UNLESS OTHERWISE SPECIFIED:
 2 PLC DEC ±.25
 3 PLC DEC ±.125
 4 PLC DEC ±.0625
 ANGLES ±.005
 SURF TEXTURE: ✓
 REMOVE BURRS, BREAK SHARP EDGES R.015 MAX

DR	6/28/94	APP	6-28-94	
D. SALTZER		T. BEDDICK		
CHK	6-28-94	REL	7/13/94	
C. ERISMAN		B. MORGAN		

NAME: END FEED HDM APPLICATOR MACHINE REF: MINI APPL
 SCALE: 1 OF 1 SHEET REV: M
 CASE CODE: 00779 CUSTOMER AND ASSEMBLY DRAWING RESTRICTED TO