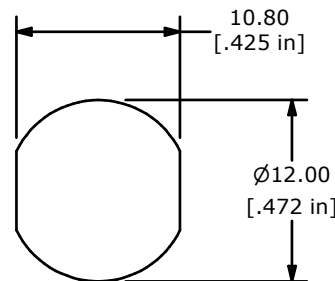
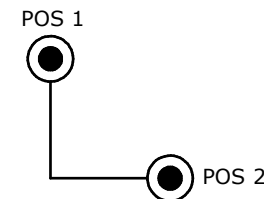


NOTES:

1. ALL DIMENSIONS IN MM[INCH]
2. GENERAL TOLERANCE: x.x= ± 0.4  
x.xx= ± 0.25
3. TERM. NOS. FOR REFERENCE ONLY.
4. RATING: 1A @125VAC, 0.5A @250VAC
5. CONTACT RESISTANCE: 20milli-OHMS MAX.
6. DIELECTRIC STRENGTH: 1,500 V rms @SEA LEVEL
- ▲7. MATERIALS:  
HOUSING: ZINC ALLOY W/CHROME PLATING  
CYLINDER: ZINC ALLOY W/CHROME PLATING  
TERMINAL AND CONTACTS: SILVER PLATED  
KEYS (2) KEY CODE 1001: ZINC ALLOY, CHROME PLATING
8. ▲ DENOTES CRITICAL PARAMETER.
9. 2002/95/EC (ROHS) COMPLIANT



RECOMENDED PANEL CUTOUT



CIRCUIT: SPDT  
CONTACT CONFIGURATION  
90° INDEXING

SWITCH FUNCTION	
POS 1	POS 2
↑	→
1-2	3-4

LEGEND

● = INDICATES KEY PULL POSSIBLE



E-SWITCH®				
TITLE KO105B1001				
SCALE	DATE	DR	DWG	REV
	3/18/2010	BLR	K100304	B

B	20918	1001 KEY CODE	12/11/12	EBP
A	18810	Release For Production	3/18/10	BLR
REV	PCR NO	DESCRIPTION	DATE	BY
THE INFORMATION CONTAINED IN THIS DOCUMENT IS PROPRIETARY TO E-SWITCH AND IS NOT TO BE COPIED OR TRANSFERRED				