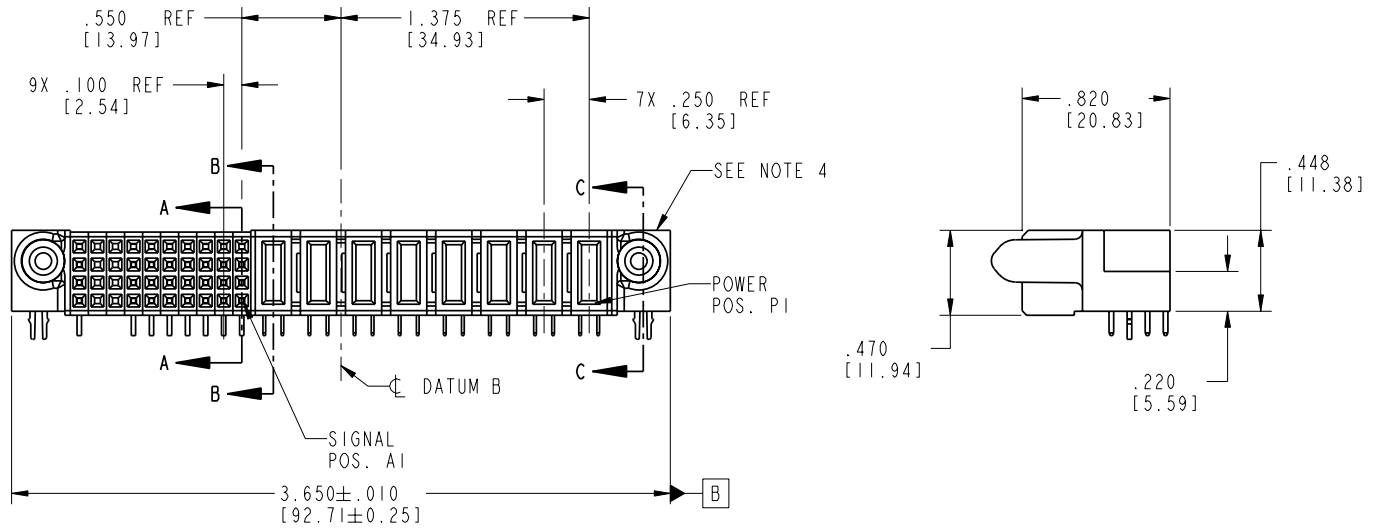
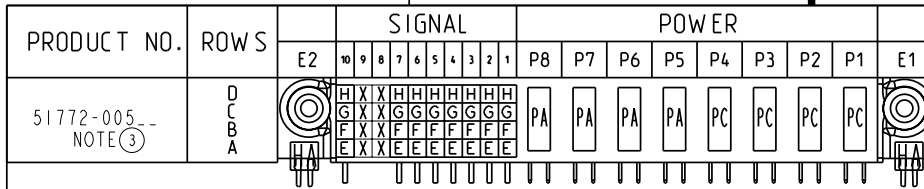


Tous droits strictement réservés. Reproduction ou communication o des tiers interdite sous quelque forme que ce soit sans autorisation écrite du propriétaire. Propriété de c FCI. Droits de reproduction FCI.

All rights strictly reserved. Reproduction or issue to third parties in any form without written authority from the proprietor. Property of FCI. Copyright FCI.



CODE	DIM "M" MATING LENGTH	CONTACT TYPE
PA	.042 [1.07]	POWER
PC	.092 [2.34]	POWER
H	N/A [N/A]	SIGNAL
G	N/A [N/A]	SIGNAL
F	N/A [N/A]	SIGNAL
E	N/A [N/A]	SIGNAL
HA	N/A [N/A]	HOLD-DOWN
X	OMITTED	OMITTED

mat'l code SEE NOTE 2				tolerances unless otherwise specified		CUSTOMER		 www.fciconnect.com
lfr	ecn no.	dr	date	linear		COPY	projection	
A	DG06-0083	RYAN	03/02/06	.XX±.01/0.X±0.3				
				.XXX±.005/0.XX±0.13			title	
				.XXX±.002/0.XXX±0.051			8P + 40S	
				angles	0°±2°		R/A SOLDER RECEPTACLE	
				dr	RYAN YUAN 03/02/06	INCH/MM	product family	
				engr	SALLY LUO 03/02/06	scale	PwrBlade	
				chr	BEER FU 03/02/06	1:1	code	
				appd	JOSEPH HSIA 03/02/06		213	
sheet index	revision sheet	A 1	A 2	A 3	A 4		size	
							dwg no	
							51772-005	
							sheet	
							1 of 4	

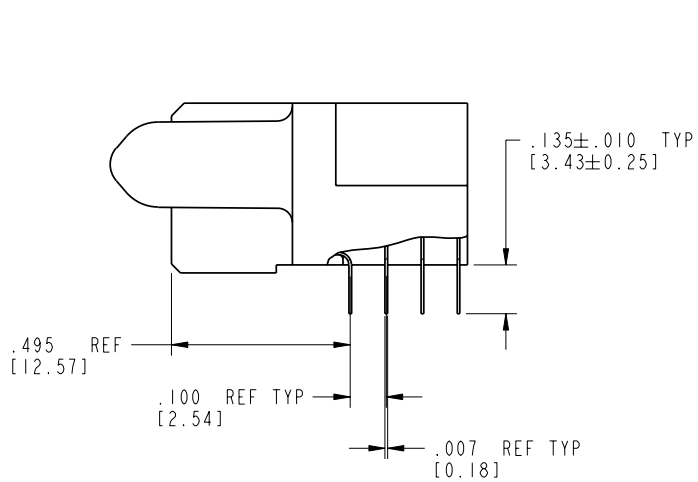
cage code 22526

Pro/E

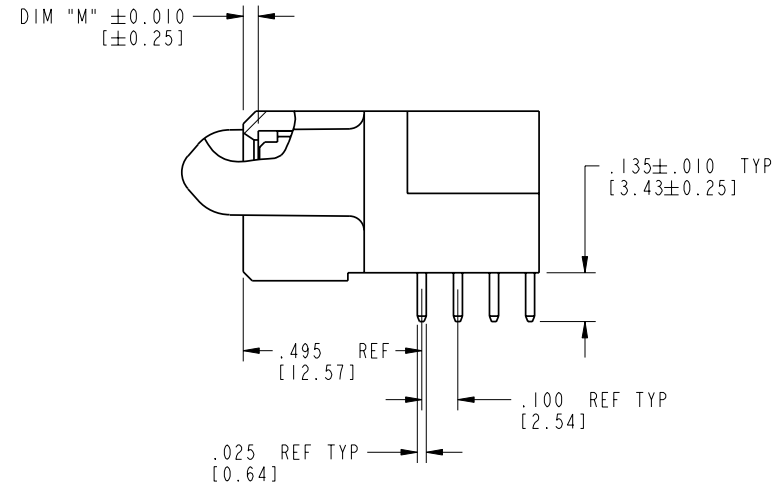
Tous droits strictement reserves. Reproduction ou communication a des tiers interdite sous quelque forme que ce soit sans autorisation écrite du propriétaire. Propriete de c FCI. Droits de reproduction FCI.

All rights strictly reserved. Reproduction or issue to third parties in any form whatever is not permitted without written authority from the proprietor. Property of FCI. Copyright FCI.

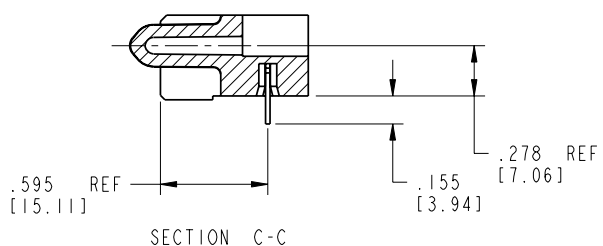
PRODUCT NUMBER  
51772-005--  
NOTE ③



BROKEN-OUT SECTION A-A  
SCALE 2:1



BROKEN-OUT SECTION B-B  
SCALE 2:1



SECTION C-C

mat'l code				SEE NOTE 2	tolerances unless otherwise specified		CUSTOMER		 www.fciconnect.com
lfr	ecn no.	dr	date	linear	.XX±.01/0.X±0.3	COPY		projection	
A				angles	.XXX±.005/0.XX±0.13	INCH/MM		title	
				dr	.XXX±.002/0.XXX±0.051	scale		8P + 40S	
				enrg	0° ± 2°	1:1		R/A SOLDER RECEPTACLE	
				chr	RYAN YUAN 03/02/06	product family		PwrBlade	
				appd	SALLY LUO 03/02/06	size		code	
					BEER FU 03/02/06	A		213	
					JOSEPH HSIA 03/02/06	51772-005		sheet	
sheet index	revision sheet							2 of 4	

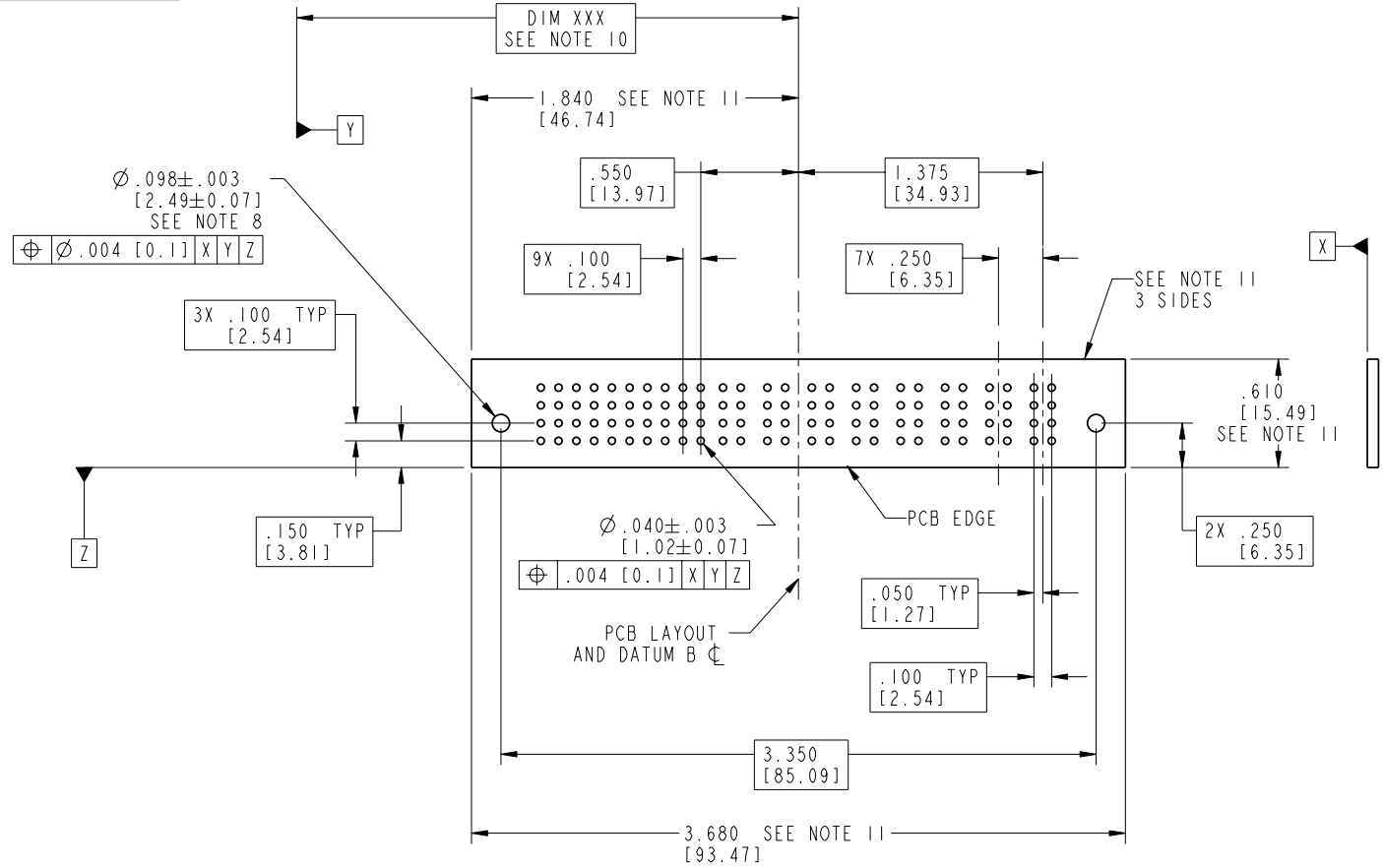
cage code 22526

Pro/E

Tous droits strictement réservés. Reproduction ou communication à des tiers interdite sous quelque forme que ce soit sans autorisation écrite du propriétaire. Propriété de c FCI. Droits de reproduction FCI.

All rights strictly reserved. Reproduction or issue to third parties in any form without written authority from the proprietor. Property of FCI. Copyright FCI.

PRODUCT NUMBER  
51772-005--  
NOTE ③



mat'l code		SEE NOTE 2		tolerances unless otherwise specified		CUSTOMER		 www.fciconnect.com	
lfr	ecn no.	dr	date	linear	.XX±.01/0.X±0.3	projection	COPY		
A					.XXX±.005/0.XX±0.13		title 8P + 40S		
				angles	.XXX±.002/0.XXX±0.051		R/A SOLDER RECEPTACLE		
				dr	0°±2°	INCH/MM	product family	PwrBlade	code
				enrg	RYAN YUAN 03/02/06	scale	size	dwg no	213
				chr	SALLY LUO 03/02/06	1:1	A	51772-005	sheet
				appd	BEER FU 03/02/06				3 of 4
				appd	JOSEPH HSIA 03/02/06				
sheet index	revision sheet								

cage code 22526

Pro/E

Tous droits strictement reserves. Reproduction ou communication a des tiers interdite sous quelque forme que ce soit sans autorisation écrite du propriétaire. Propriete de c FCI. Droits de reproduction FCI.



All rights strictly reserved. Reproduction or issue to third parties in any form whatever is not permitted without written authority from the proprietor. Property of FCI. Copyright FCI.

PRODUCT NUMBER  
51772-005--  
NOTE ③

NOTES:

1. DIMENSIONS AND TOLERANCES ARE IN ACCORDANCE WITH ASME Y14.5M, 1994 UNLESS OTHERWISE SPECIFIED.

CONNECTOR NOTES:

- ② HOUSING MATERIAL: UL 94 V-0 GLASS FILLED HIGH-TEMP THERMOPLASTIC  
POWER CONTACT MATERIAL: COPPER ALLOY  
SIGNAL PIN MATERIAL: COPPER ALLOY
- ③ PLATING:  
SEE PRINT 10064183 FOR PLATING SPEC OF 51772-005; 51772-005LF
- ④ MANUFACTURER'S NAME, P/N, AND DATE CODE TO APPEAR ON THIS SURFACE.
- 5. PRODUCT SPECIFICATION GS-12-149.  
APPLICATION SPECIFICATION BUS-20-067.
- 6. PACKAGED IN TRAYS.

PCB NOTES:

- 7. ALL HOLE DIAMETERS ARE FINISHED HOLE SIZE.
- ⑧ MOUNTING HOLES, WHERE APPLICABLE, ARE UNPLATED.
- ⑨  $\varnothing .0453 \pm .0010$  [1.151  $\pm$  0.025] DRILLED HOLES PLATED WITH  
.0003 [0.008] MIN SnPb OVER .001 [0.03]  
TO .003 [0.08] Cu PLATING TO ACHIEVE  
 $\varnothing .040 \pm .003$  [1.02  $\pm$  .07] HOLE.
- ⑩ "DIM XXX" TO BE DETERMINED BY THE CUSTOMER.
- ⑪ CONNECTOR KEEP-OUT ZONE.

mat'l code				SEE NOTE 2		tolerances unless otherwise specified		CUSTOMER		 www.fciconnect.com	
lfr	ecr no.	dr	date	linear	.XX±.01/0.X±0.3	COPY		projection		title	
A					.XXX±.005/0.XX±0.13					8P + 40S	
				angles	.XXX±.002/0.XXX±0.051					R/A SOLDER RECEPTACLE	
				dr	0° ± 2°	RYAN YUAN 03/02/06		INCH/MM		product family PwrBlade code	
				enrg		SALLY LUO 03/02/06		scale		size dwg no	
				chr		BEER FU 03/02/06		1:1		A 51772-005	
				appd		JOSEPH HSIA 03/02/06				sheet 213	
sheet index		revision sheet								sheet 4 of 4	

cage code 22526

Pro/E