

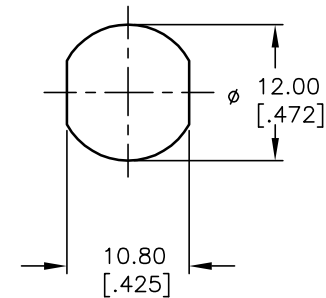
CIRCUIT: SPST
CONTACT CONFIGURATION

| SWITCH FUNCTION | |
|-----------------|-------|
| POS 1 | POS 2 |
| ↑ | → |
| OFF | (ON) |

() = MOMENTARY

LEGEND

- = OFF POSITION
- = INDICATES KEY PULL
- X = INDICATES NO KEY PULL



RECOMMENDED PANEL CUTOUT

NOTES:

1. ALL DIMENSIONS IN MM
2. GENERAL TOLERANCE: X.X=±0.4
X.XX=±0.25
3. TERM. NOS. FOR REFERENCE ONLY.
4. RATING: 1A @125VAC, 0.5A @250VAC
5. CONTACT RESISTANCE: 10mILLI-OHMS
6. DIELECTRIC STRENGTH: 1000 VAC-1Minute
7. MATERIALS:
HOUSING: ZINC ALLOY DIE CAST
CYLINDER: ZINC ALLOY W/CHROME PLATING
TERMINAL AND CONTACTS: SILVER PLATED
KEYS (2) KEY CODE 755: ZINC ALLOY, CHROME PLATING

| REV. | ECN No. | DESCRIPTION | DATE | CHKD |
|------|---------|------------------------------|----------|------|
| D | 13563 | OVERALL LENGTH & DESCRIPTION | 10/30/03 | AR |
| C | 13056 | DESC WAS K0133C-755 | 4/17/03 | AR |
| B | 12767 | DESC WAS K0133E-755 | 1/27/03 | CJB |
| A | 11735 | RELEASED FOR PRODUCTION | 10/12/01 | CJB |

THE INFORMATION CONTAINED IN THIS DOCUMENT IS PROPRIETARY TO E-SWITCH AND IS NOT TO BE COPIED OR TRANSFERRED

| | | | | |
|-------|----------|-----|---------|-----|
| SCALE | DATE | DR | DWG | REV |
| 1.5:1 | 10/12/01 | CJB | K400111 | D |

E-SWITCH®

K0133C-755