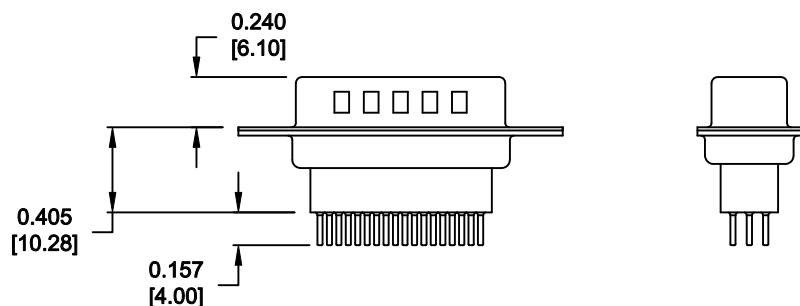
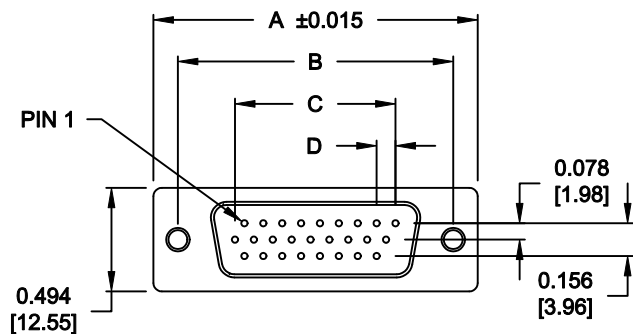


DESCRIPTION: HIGH DENSITY VERTICAL HIGH PROFILE MACHINED



DIMENSIONS (IN.)				
No. OF PINS	A	B	C	D
15	1.214 [30.84]	0.984 [24.99]	0.405 [10.29]	0.090 [2.29]
26	1.545 [39.24]	1.312 [33.32]	0.765 [19.43]	0.090 [2.29]
44	2.087 [53.00]	1.852 [47.04]	1.305 [33.15]	0.090 [2.29]
62	2.728 [69.30]	2.500 [63.50]	1.948 [49.47]	0.095 [2.41]
4 ROWS 78	2.638 [67.00]	2.406 [61.10]	1.805 [45.85]	0.095 [2.41]

MATERIAL:

INSULATOR: PBT, UL94V-0, 230°C PROCESS TEMP.,
 CHEMICAL RESISTANCE, COLOR - BLACK
 SHELL: STEEL, NICKEL PLATED
 CONTACT: BRASS, GOLD PLATED

ELECTRICAL:



CURRENT RATING: 2 AMPS
 DIELECTRIC WITHSTANDING VOLTAGE: 1,000VAC rms
 INSULATION RESISTANCE: 5,000 MegOhms Min.
 CONTACT RESISTANCE: 10 MilliOhms Max.
 WORKING TEMPERATURE: -55°C TO +125°C

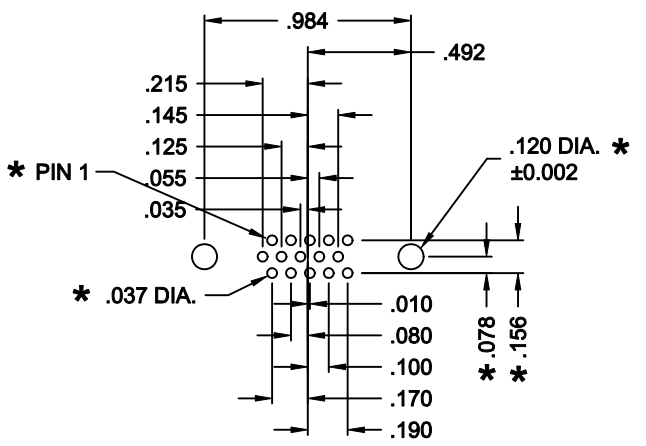
196-YYY-113LYY1

SERIES _____
 POSITIONS _____
 015 _____
 026 _____
 044 _____
 062 _____
 078 _____
 GENDER _____
 1 = MALE (GROUND INDENTS)
 TERMINATION _____
 1 = PC MOUNT
 SHELL PLATING _____
 3 = NICKEL PLATED
 RoHS COMPLIANT (LOW TEMP. PROCESS) _____
 HARDWARE OPTIONS _____
 00 = 0.120" MOUNTING HOLE
 03 = 4-40 HEX STANDOFFS
 55 = 4-40 INSERTS
 PLATING _____
 1 = GOLD FLASH (ENTIRE CONTACT)
 2 = 30u" GOLD PLATING

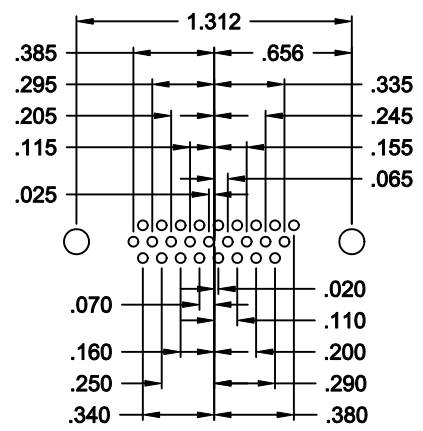
DO NOT SCALE FROM DRAWING

RoHS COMPLIANT

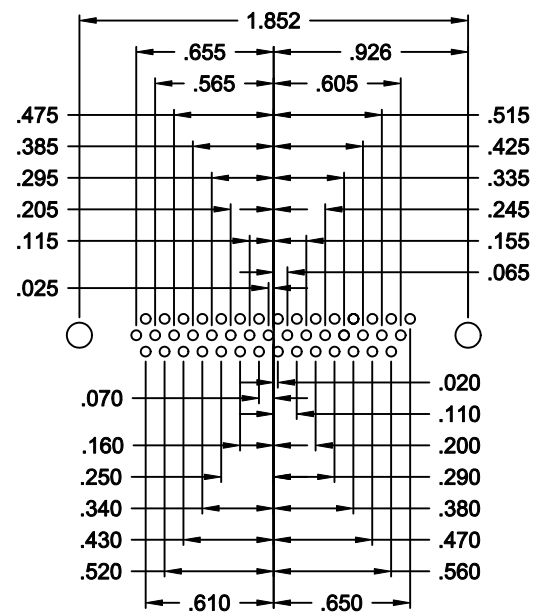
	THESE DRAWINGS AND SPECIFICATIONS ARE THE PROPERTY OF NorComp AND SHALL NOT BE REPRODUCED, COPIED OR USED AS THE BASIS FOR THE MANUFACTURE OF SALE OF APPARATUS WITHOUT WRITTEN PERMISSION.	DRAWN: PAM JENKINS CHECKED: _____	DATE: 09-15-05 DATE: _____
		SCALE: 1:1 DWG NO. 196-YYY-113LYY1	SHEET 1 OF 3 REV 6



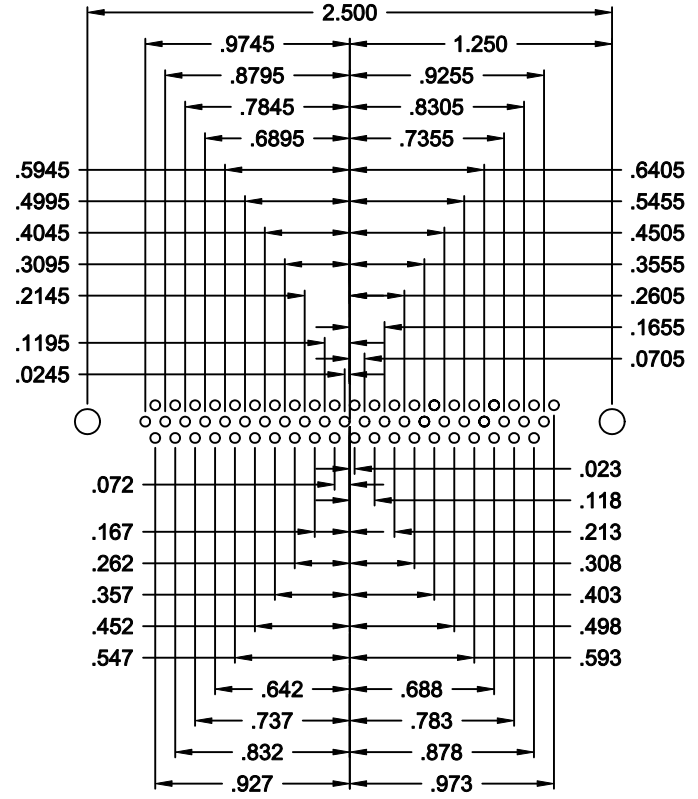
15 POSITION



26 POSITION

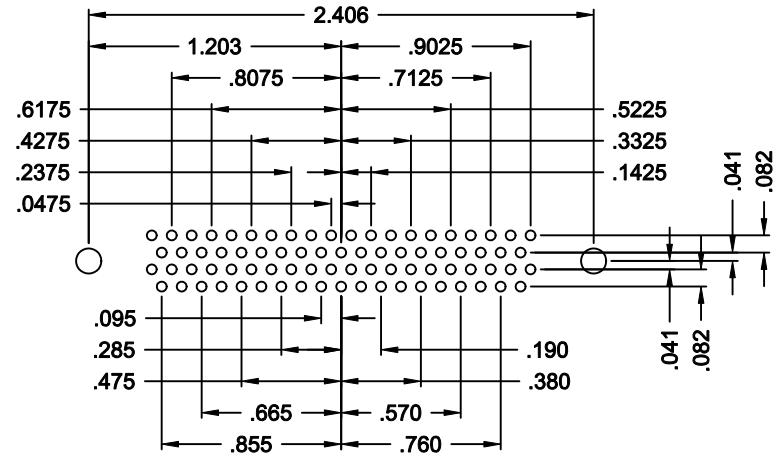


44 POSITION



62 POSITION

ROHS COMPLIANT



78 POSITION

180 SERIES
HIGH DENSITY
VERTICAL

HOLE PATTERN SHOWN
ARE FOR MALE

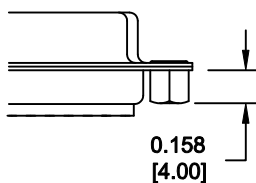
* TYP. ON ALL SIZES

DO NOT SCALE FROM DRAWING

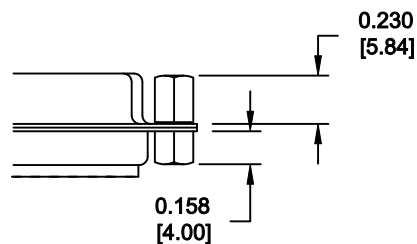
	THESE DRAWINGS AND SPECIFICATIONS ARE THE PROPERTY OF NorComp AND SHALL NOT BE REPRODUCED, COPIED OR USED AS THE BASIS FOR THE MANUFACTURE OF SALE OF APPARATUS WITHOUT WRITTEN PERMISSION.		DRAWN: PAM JENKINS	DATE: 10-29-01
			CHECKED:	DATE:
NorComp		SCALE: 2:1	SHEET 2 OF 3	REV 6
		DWG NO. 196-YYY-113LYY1		

TOLERANCE:
ALL DIMENSIONS ARE ±0.010


55X 0.158" (BOARD SIDE)



03X 0.158" (BOARD SIDE) - 0.230" MATING SIDE



DO NOT SCALE FROM DRAWING

	THESE DRAWINGS AND SPECIFICATIONS ARE THE PROPERTY OF NorComp AND SHALL NOT BE REPRODUCED, COPIED OR USED AS THE BASIS FOR THE MANUFACTURE OF SALE OF APPARATUS WITHOUT WRITTEN PERMISSION.		DRAWN: M.SIGMON	DATE: 11-19-10
			CHECKED:	DATE:
<h1>NorComp</h1>		SCALE:	SHEET 3 OF 3	REV 6
		DWG NO. 196-YYY-113LYY1		

RoHS COMPLIANT