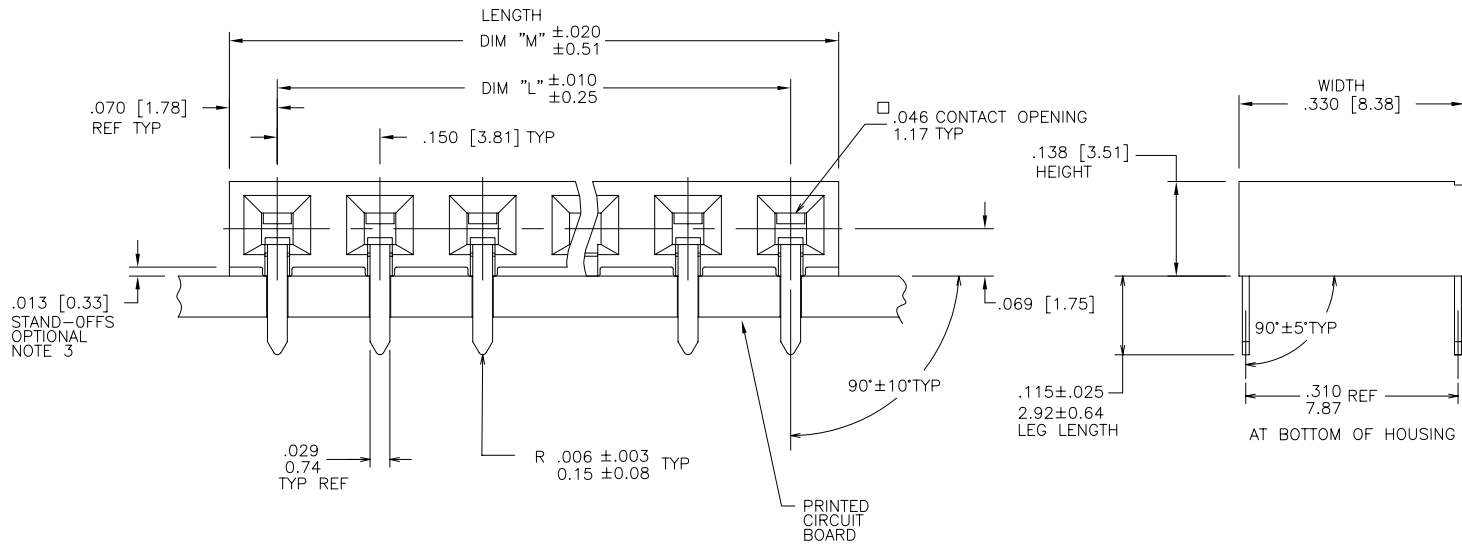
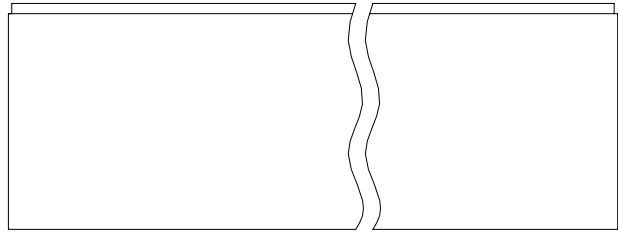


PRODUCT NUMBER
SEE TABLE



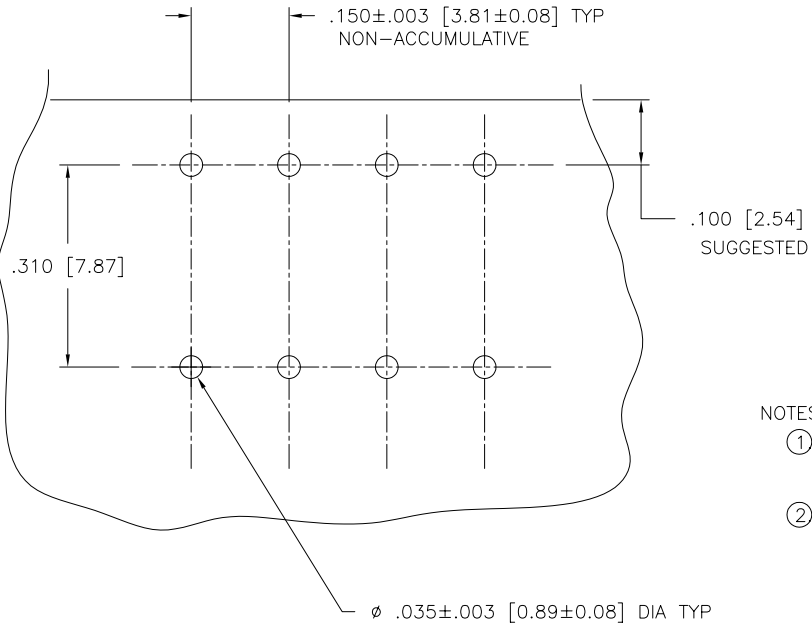
FCIconnect.com

Copyright FCI

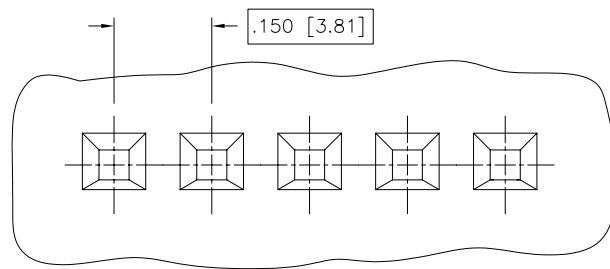
mat'l. code		surface ISO 1302 ✓		tolerance ISO 406 ISO 1101		projection INCH/MM		product family CARD CONN	
ltr		ecn no dr		date		tolerances unless otherwise specified		title	
X	REVISED	EBY	2/14/86	angles	linear	.XX±.01/.X±.3	INCH/MM	1X.150 HORIZ. CARD CONN. HT NYLON	
Y	V61618	MDF	10/31/96	0'±2'		.XXX±.0.005/.XX±.13			
AA	V70992	JM	10/12/97			.XXXX±.0020/.XXX±.051	scale 4:1	dwg no sheet 1 of 6 size	
AB	v02523	AZ	10/23/00	dr	M.CLOUSER	10/2/85	FCI	65059 A3	
AC	M05-0199	ERE	09/15/05	enr	H.SUNDY	10/31/96		type Product Customer Drawing	
AD	M06-0210	MHT	6/03/06	chr	H.SUNDY	10/31/96			
				appd	H.SUNDY	10/31/96			
sheet index	revision	AD	AD	AD	AD	AD	AD		
	sheet	1	2	3	4	5	6		

form: A3

PRODUCT NUMBER
SEE TABLE



RECOMMENDED MOUNTING HOLE PATTERN
SCALE 4/1



MATING PIN PATTERN
SCALE 4/1

-ALL MATING .025/0.64 SQ. PINS ON TRUE CENTER OF BASIC DIMENSIONS WITHIN .015/0.38 DIA.
-SUGGESTED MATING PIN LENGTH $.350 \pm .020 / 8.89 \pm 0.51$.

NOTES:

- ① HOUSING MAT'L:
FILLED HIGH TEMPERATURE NYLON
COLOR: BLACK
- ② TERMINAL MATERIAL:
BODY: BRASS, .010/0.250 THK
SPRING: BE-CU, HEAT TREATED. SEE TABLE FOR THICKNESS
PLATING:
40u"/1.02u Au IN CONTACT AREA (STANDARD PLATING)
(EXCEPTIONS NOTED IN TABLE)
- ③. ADD "LF" SUFFIX AT THE END OF PART NUMBER FOR LEAD FREE OPTION.
- ④. THESE PRODUCTS MEET EUROPEAN UNION DIRECTIVES AND OTHER COUNTRY REGULATIONS AS DESCRIBED IN GS-22-008.
5. THIS PART WILL WITHSTAND EXPOSURE TO 260°C PEAK TEMPERATURE FOR 20 SECONDS IN WAVE SOLDER, INFRA-RED OR VAPOR PHASE SOLDER PROCESS.
- ⑥. "THIS PRODUCT HAS 100% TIN PLATING IN THE INTERFACE AND HAS NOT BEEN TESTED FOR WHISKER GROWTH IN ALL INTERCONNECT ENVIRONMENTS."
- ⑦. MARKING FCI PART NUMBER & DATE CODE LEGIBLE ON TUBE LABEL.



FCIconnect.com

Copyright FCI

mat'l. code		surface ISO 1302 ✓		tolerance ISO 406 ISO 1101		projection ⊕		product family CARD CONN	
ltr		ecn no dr		date		tolerances unless otherwise specified		title	
AD						.XX±.01/.X±.3 linear		INCH/MM	
				0'±2'		.XXX±.0.005/.XX±.13 .XXXX±.0020/.XXX±.051		scale 4:1	
				dr		M.CLOUSER 10/2/85		dwg no	
				enr		H.SUNDY 10/31/96		sheet 2 of 6 size	
				chr		H.SUNDY 10/31/96		65059 A3	
				appd		H.SUNDY 10/31/96		type Product Customer Drawing	
sheet index		revision sheet							

PRODUCT NO.	NO OF POS	DIM "L"	DIM "M"	HOUSING MATERIAL	SPRING THICKNESS	BODY PLATING THICKNESS	CUSTOMER RESTRICTED	LEAD FREE OPTION
65059-001	1 X 5	.600/15.24	.740/18.80	HT NYLON	.0035/0.089	40u"/1.02u Au		NOTE 3, 4
-002	1 X 6	.750/19.05	.890/22.61					
-003	1 X 7	.900/22.86	1.040/26.42					
-004	1 X 8	1.050/26.67	1.190/30.23					
-005	1 X 9	1.200/30.48	1.340/34.04					
-006	1 X 10	1.350/34.29	1.490/37.85					
-007	1 X 11	1.500/38.10	1.640/41.66					
-008	1 X 12	1.650/41.91	1.790/45.47					
-009	1 X 13	1.800/45.72	1.940/49.28					
-010	1 X 14	1.950/49.53	2.090/53.09					
-011	1 X 15	2.100/53.34	2.240/56.90					
-012	1 X 16	2.250/57.15	2.390/60.71					
-013	1 X 17	2.400/60.96	2.540/64.52					
-014	1 X 18	2.550/64.77	2.690/68.33					
-015	1 X 19	2.700/68.58	2.840/72.14					
-016	1 X 20	2.850/72.39	2.990/75.95					
-017	1 X 21	3.000/76.20	3.140/79.76					
-018	1 X 22	3.150/80.01	3.290/83.57					
-019	1 X 23	3.300/83.82	3.440/87.38					
-020	1 X 24	3.450/87.63	3.590/91.19					
-021	1 X 25	3.600/91.44	3.740/95.00					
-022	1 X 26	3.750/95.25	3.890/98.81					
-023	1 X 27	3.900/99.06	4.040/102.62					
-024	1 X 28	4.050/102.87	4.190/106.43					
65059-025	1 X 29	4.200/106.68	4.340/110.24	HT NYLON	.0035/0.089	40u"/1.02u Au		NOTE 3, 4



FCIconnect.com

Copyright FCI

mat'l. code		surface ISO 1302 <input checked="" type="checkbox"/>	tolerance ISO 406 ISO 1101	projection 	product family CARD CONN
ltr	ecn no	dr	date	tolerances unless otherwise specified	title
AD				angles linear 0°±2'	1X.150 HORIZ. CARD CONN. HT NYLON
				dr M.CLOUSER 10/2/85	dwg no 65059
				enr H.SUNDY 10/31/96	sheet 3 of 6 size A3
				chr H.SUNDY 10/31/96	type Product Customer Drawing
				appd H.SUNDY 10/31/96	
sheet index	revision sheet				

PRODUCT NO.	NO OF POS	DIM "L"	DIM "M"	HOUSING MATERIAL	SPRING THICKNESS	BODY PLATING THICKNESS	CUSTOMER RESTRICTED	LEAD FREE OPTION
65059-026	1 X 30	4.350/110.49	4.490/114.05	HT NYLON	.0035/0.089	40u"/1.02u Au		NOTE 3, 4
-027	1 X 12	1.650/41.91	1.790/45.47				RESTRICTED	
-028	1 X 26	3.750/95.25	3.890/98.81				RESTRICTED	
-029	1 X 1	.000/0.00	.140/3.56					
-030	1 X 2	.150/3.81	.290/7.37					
-031	1 X 3	.300/7.62	.440/11.81					
-032	1 X 4	.450/11.43	.590/14.99			40u"/1.02u Au		
-033	1 X 8	1.050/26.67	1.190/30.23			100u"/2.54u TIN LEAD	RESTRICTED	
-034	1 X 30	4.350/110.49	4.490/114.05			100u"/2.54u TIN LEAD	RESTRICTED	
-035	1 X 16	2.250/57.15	2.390/60.71			40u"/1.02u Au	RESTRICTED	
-036	1 X 24	3.450/87.63	3.590/91.19			50u"/1.27u Au		
-037	1 X 28	4.050/102.87	4.190/106.43			50u"/1.27u Au		
-038	1 X 13	1.800/45.72	1.940/49.28			40u"/1.02u Au		
-039	1 X 15	2.100/53.34	2.240/56.90			40u"/1.02u Au		
-040	1 X 27	3.900/99.06	4.040/102.61			40u"/1.02u Au		
-041	1 X 18	2.550/64.77	2.690/68.33		.0035/0.089	100u"/2.54u Au	RESTRICTED	
-042	1 X 22	3.150/80.01	3.290/83.57		.0048/0.122	40u"/1.02u Au	RESTRICTED	
-043	1 X 5	.600/15.24	.740/18.80		.0035/0.089	40u"/1.02u Au	RESTRICTED	
65059-044	1 X 7	.900/22.86	1.040/26.42	HT NYLON	.0035/0.089	40u"/1.02u Au	RESTRICTED	NOTE 3, 4

—OBS.



Copyright FCI

mat'l. code		surface ISO 1302 <input checked="" type="checkbox"/>		tolerance ISO 406 ISO 1101		projection 		product family CARD CONN	
ltr	ecn	no	dr	date		tolerances unless otherwise specified		title	
AD						angles	linear	1X.150 HORIZ. CARD CONN. HT NYLON	
						0'±2'		INCH/MM	
								scale 4:1	
			dr	M.CLOUSER		10/2/85		dwg no	
			enr	H.SUNDY		10/31/96		sheet 4 of 6 size	
			chr	H.SUNDY		10/31/96		65059 A3	
			appd	H.SUNDY		10/31/96		type Product Customer Drawing	
sheet index	revision sheet								



PRODUCT NO.	NO OF POS	DIM "L"	DIM "M"	HOUSING MATERIAL	SPRING THICKNESS	BODY PLATING THICKNESS	CUSTOMER RESTRICTED	LEAD FREE OPTION
65059-201	1 X 1	.000/0.00	.140/3.56	HT-NYLON	.0035/0.089	100u"/2.54u TIN LEAD		
-202	1 X 2	.150/3.81	.290/7.37	HT NYLON	.0035/0.089	100u"/2.54u TIN LEAD		NOTE 3, 4
-203	1 X 3	.300/7.62	.440/11.18					
-204	1 X 4	.450/11.43	.590/14.99					
-205	1 X 5	.600/15.24	.740/18.80					
-206	1 X 6	.750/19.05	.890/22.61					
-207	1 X 7	.900/22.86	1.040/26.42					
-208	1 X 8	1.050/26.67	1.190/30.23					
-209	1 X 9	1.200/30.48	1.340/34.04					
-210	1 X 10	1.350/34.29	1.490/37.85					
-211	1 X 11	1.500/38.10	1.640/41.66					
-212	1 X 12	1.650/41.91	1.790/45.47					
-213	1 X 13	1.800/45.72	1.940/49.28					
-214	1 X 14	1.950/49.53	2.090/53.09					
-215	1 X 15	2.100/53.34	2.240/56.90					
-216	1 X 16	2.250/57.15	2.390/60.71					
-217	1 X 17	2.400/60.96	2.540/64.52					
-218	1 X 18	2.550/64.77	2.690/68.33					
-219	1 X 19	2.700/68.58	2.840/72.14					
-220	1 X 20	2.850/72.39	2.990/75.95					
-221	1 X 21	3.000/76.20	3.140/79.76					
-222	1 X 22	3.150/80.01	3.290/83.57					
-223	1 X 23	3.300/83.82	3.440/87.38					
-224	1 X 24	3.450/87.63	3.590/91.19					
65059-225	1 X 25	3.600/91.44	3.740/95.00	HT NYLON	.0035/0.089	100u"/2.54u TIN LEAD		NOTE 3, 4

OBS.

NOTE 3, 4

NOTE 3, 4



FCJconnect.com

Copyright FCJ

mat'l. code		surface ISO 1302 <input checked="" type="checkbox"/>		tolerance ISO 406 ISO 1101		projection 		product family CARD CONN	
ltr	ecn no	dr	date	tolerances unless otherwise specified		INCH/MM		title	
AD				angles	linear	.XX±.01/.X±.3 .XXX±.0.005/.XX±.13 .XXXX±.0020/.XXX±.051		1X.150 HORIZ. CARD CONN. HT NYLON	
				0'±2"		scale 4:1		dwg no sheet 5 of 6 size	
				dr	M.CLOUSER	10/2/85			65059 A3
				enr	H.SUNDY	10/31/96			
				chr	H.SUNDY	10/31/96			
				appd	H.SUNDY	10/31/96			
sheet index	revision sheet								type Product Customer Drawing

PRODUCT NO.	NO OF POS	DIM "L"	DIM "M"	HOUSING MATERIAL	SPRING THICKNESS	BODY PLATING THICKNESS	CUSTOMER RESTRICTED	LEAD FREE OPTION
65059-226	1 X 26	3.750/95.25	3.890/98.81	HT NYLON	.0035/0.089	100u"/2.54u TIN LEAD		NOTE 3, 4
-227	1 X 27	3.900/99.06	4.040/102.62					
-228	1 X 28	4.050/102.87	4.190/106.43					
-229	1 X 29	4.200/106.68	4.340/110.24					
-230	1 X 30	4.350/110.49	4.490/114.05		.0035/0.089			
65059-231	1 X 31	3.150/80.01	3.290/83.57	HT NYLON	.0048/0.122	100u"/2.54u TIN LEAD	RESTRICTED	NOTE 3, 4



Copyright FCI

mat'l. code		surface ISO 1302 <input checked="" type="checkbox"/>		tolerance ISO 406 ISO 1101		projection 		product family CARD CONN	
ltr	ecn	no	dr	date		tolerances unless otherwise specified		title	
AD						angles	linear	1X.150 HORIZ. CARD CONN. HT NYLON	
						0°±2'		scale 4:1	
				dr	M.CLOUSER	10/2/85			dwg no
				enr	H.SUNDY	10/31/96			sheet 6 of 6 size
				chr	H.SUNDY	10/31/96			65059
				appd	H.SUNDY	10/31/96			A3
sheet index	revision sheet							type Product Customer Drawing	