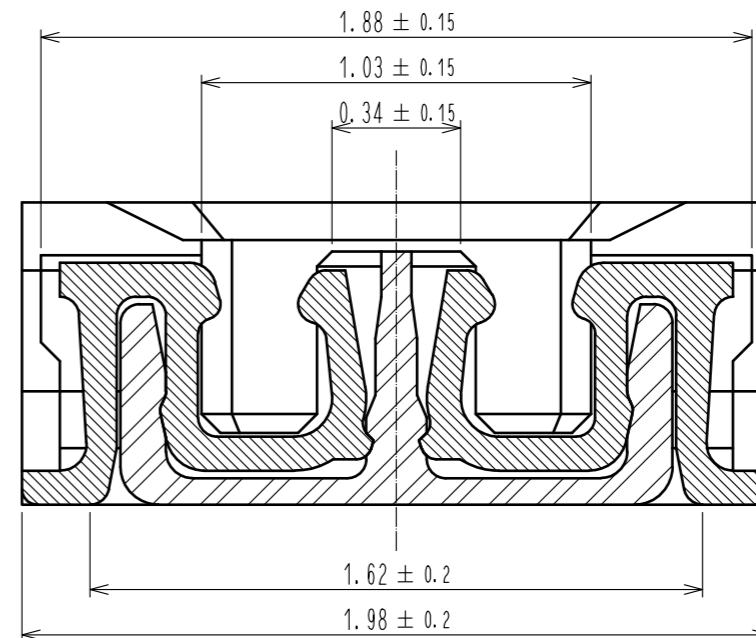
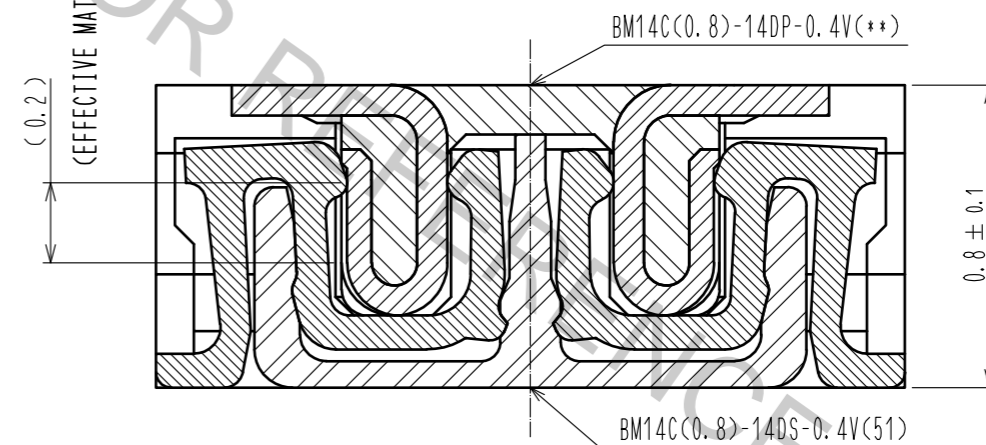


A-A (50:1)



ENGAGEMENT FIGURE (50:1)



NOTE) 1 . ALL LEAD CO-PLANARITY SHALL BE 0.08mm MAX

2 CONTACT PLATING SPECIFICATIONS.

CONTACT AREA : GOLD 0.05 μm MIN

SMT LEAD : GOLD 0.05 μm MIN

UNDERPLATING : NICKEL 1 μm MIN

(SURFACE : SEALING)

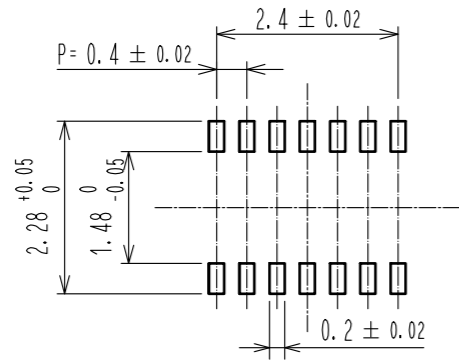
3 HRS MARK AND CAV NO. ARE INDICATED IN APPROX POSITION SHOWN.

4 GATE POSITION IS INDICATED IN APPROX POSITION SHOWN.

3	PS	CLEAR (ENBOSSED CARRIER TAPE)	6	PS	CLEAR (REINFORCEMENT COLLAR)
2	PHOSPHOR BRONZE	2	5	PS	BLACK (PLASTIC REEL)
1	LCP	UL94 V-0, BLACK	4	POLYESTER	CLEAR (COVER TAPE)
NO.	MATERIAL	FINISH . REMARKS	NO.	MATERIAL	FINISH . REMARKS

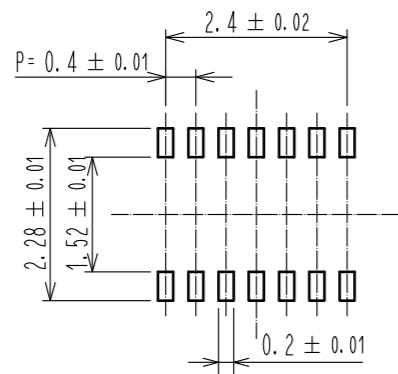
UNITS mm		SCALE 10:1	COUNT 1	DESCRIPTION OF REVISIONS	DESIGNED	CHECKED	DATE
HIROSE ELECTRIC CO., LTD.				APPROVED : MO. ISHIDA 16.04.26 CHECKED : TS. MIYAZAKI 16.04.26 DESIGNED : NY. YAMASHIRO 16.04.26 DRAWN : SN. NUMAZAKI 16.04.25	DRAWING NO. EDC-324406-51-00 PART NO. BM14C(0.8)-14DS-0.4V(51) CODE NO. CL684-8017-0-51		

◆ RECOMMENDED PCB LAYOUT

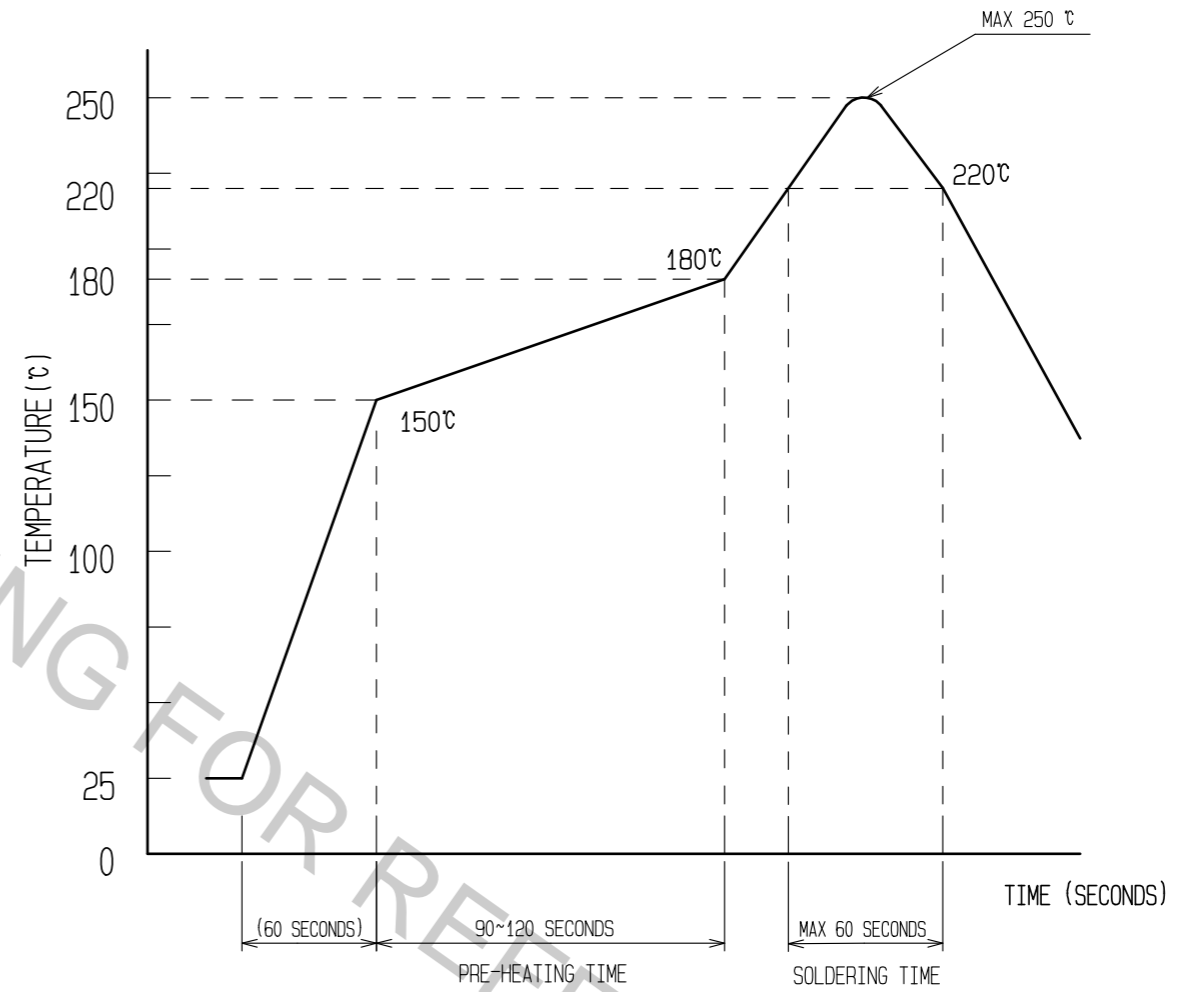


◆ RECOMMENDED METAL MASK DIMENSIONS

METAL MASK THICKNESS : 100 μm



⑥ RECOMMENDED REFLOW TEMPERATURE PROFILE USING LEAD-FREE SOLDER PASTE.



- REFLOW METHOD: IR REFLOW
 NUMBER OF REFLOW CYCLES: 2 CYCLES MAX.
- 1) REFLOW TIME
 DURATION ABOVE 220°C, 60 SEC. MAX.
 (PEAK TEMPERATURE: 250°C MAX)
 - 2) PRE-HEAT TIME
 PRE-HEAT TEMPERATURE(MIN): 150°C
 PRE-HEAT TEMPERATURE(MAX): 180°C
 PRE-HEAT TIME: 90-120 sec.

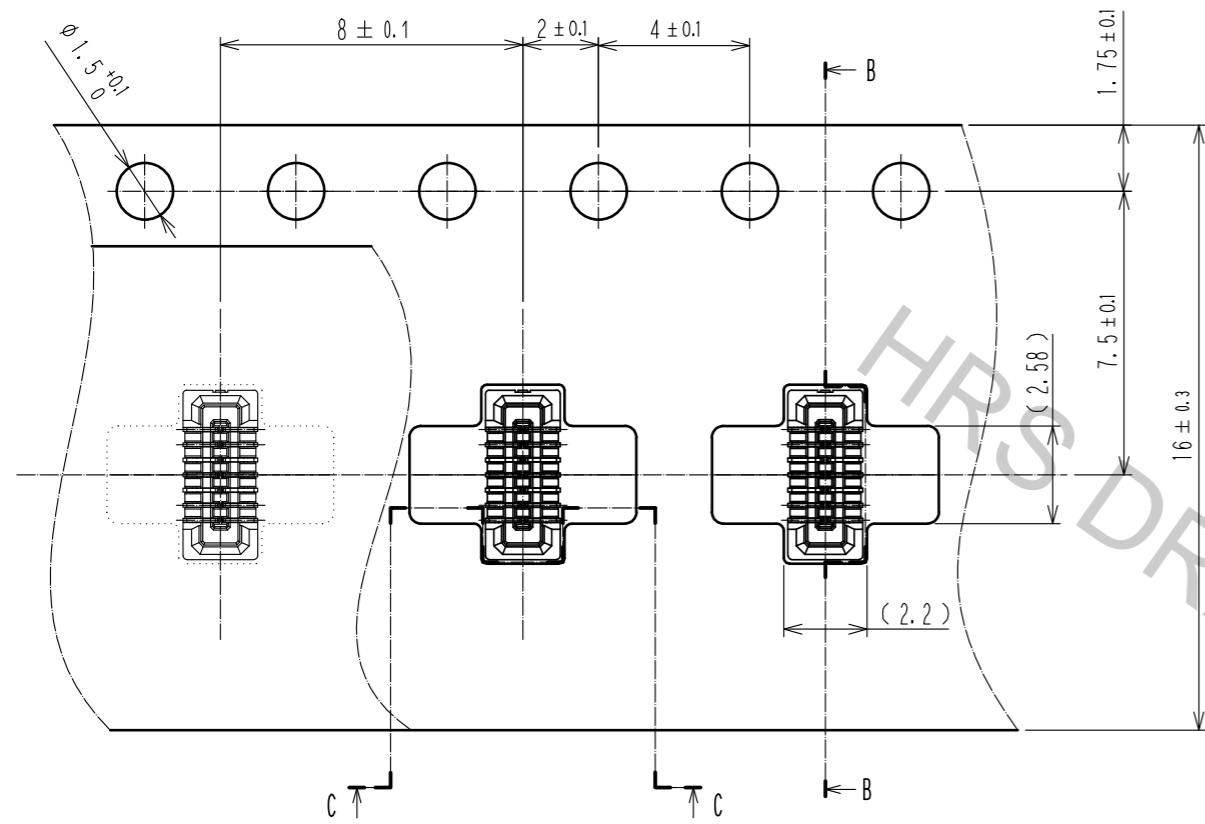
⑥ THIS TEMPERATURE PROFILE IS PER THE CONDITIONS SHOWN ABOVE. ADDITIONAL FACTORS, SUCH AS SOLDER PASTE TYPE, PCB SIZE AND OTHER MOUNTED COMPONENTS COULD AFFECT THE PROFILE, THEREFORE, A THOROUGH EVALUATION OF MOUNTING CONDITION IS REQUIRED PRIOR TO PRODUCTION. TEMPERATURE IS MEASURED AT CONTACT LEAD.

HRS	DRAWING NO.	EDC-324406-51-00
	PART NO.	BM14C(0.8)-14DS-0.4V(51)
	CODE NO.	CL684-8017-0-51

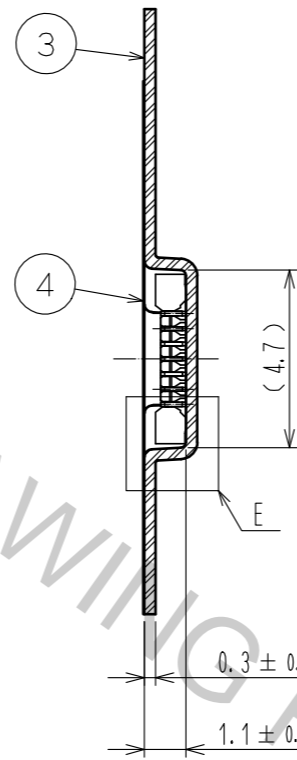
HRS DRAWING FOR REFERENCE

EMBOSSED CARRIER TAPE PACKAGING (5:1)

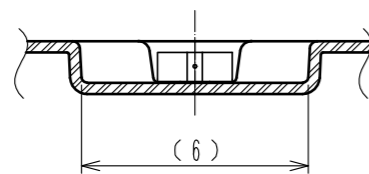
STYLE AND DIMENTION OF REEL (FREE)



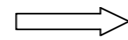
B-B (5:1)



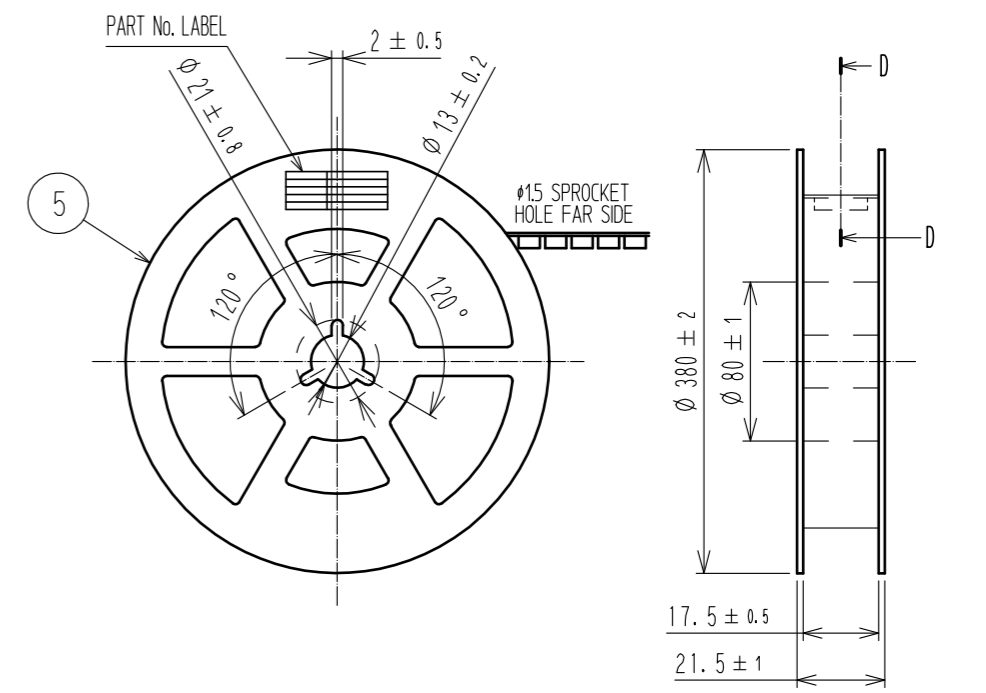
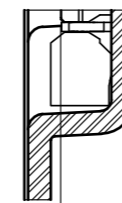
C-C (5:1)



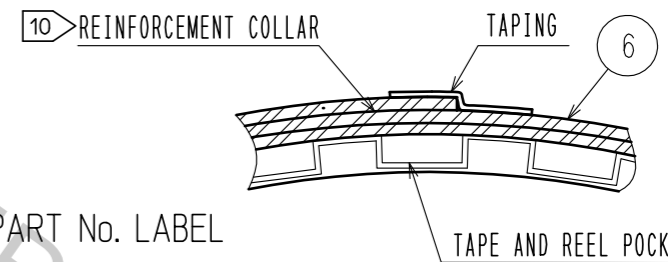
DIRECTION OF UNREELING



E(10:1)



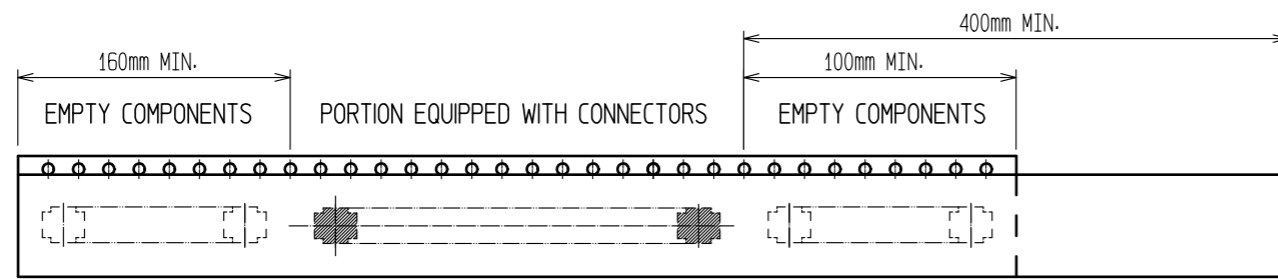
D-D (FREE)



DETAIL OF PART No. LABEL

- SUPPLIER
- QUANTITY
- PART No.
- CODE No.
- DATE OF MANUFACTURED

製造年月日	** ** *
製品コード	CL684-8017-0-51
製品名	BM14C(0.8)-14DS-0.4V(51)
数量	8,000
納入者	ヒロセ電機(株)



TRAILER

9 TAPING (FREE)

LEADER

7. PER REEL 8000 CONNECTORS.

8. THE DIMENSIONS IN PARENTHESES ARE FOR REFERENCE.

9 REFER TO JIS C 0806(PACKAGING OF COMPONENTS FOR AUTOMATIC HANDLING)

10 AFTER PACKAGING, ROLL 2 METERS OF THE REINFORCEMENT COLLAR TO OUTER CIRCUMFERENCE OF TAPE AND REEL POCKET, AND TAPE DOWN AT THE END THE COLLAR.

HRS	DRAWING NO.	EDC-324406-51-00
	PART NO.	BM14C(0.8)-14DS-0.4V(51)
	CODE NO.	CL684-8017-0-51
		\triangle 3/3