

Single PCB terminal block - PTSPLO-6/1-2X2 2,9 R32 - 1705085

Please be informed that the data shown in this PDF Document is generated from our Online Catalog. Please find the complete data in the user's documentation. Our General Terms of Use for Downloads are valid (<http://phoenixcontact.com/download>)



PCB terminal block for tin-plated stranded cables, e.g., type PV 1-F, nominal current: 41 A, 1-pos., connection method: spring-cage connection, mounting: THT/THR, user information on through hole reflow technology can be found at: combicon.com



Key commercial data

Packing unit	1 pc
Minimum order quantity	220 pc
Weight per Piece (excluding packing)	3.36 GRM
Custom tariff number	85369010
Country of origin	Germany

Technical data

Dimensions

Pin dimensions	0,6 x 1
Hole diameter	1.3 mm

General

Nominal current I_N	41 A
Nominal cross section	6 mm ²
Solder pin surface	Sn
Stripping length	15 mm

Connection data

Conductor cross section stranded min.	2.5 mm ²
Conductor cross section stranded max.	6 mm ²
Conductor cross section stranded, with ferrule without plastic sleeve min.	2.5 mm ² Min.
Conductor cross section stranded, with ferrule without plastic sleeve max.	6 mm ² max.

Single PCB terminal block - PTSPLO-6/1-2X2 2,9 R32 - 1705085

Classifications

eCl@ss

eCl@ss 4.0	272607xx
eCl@ss 4.1	27260701
eCl@ss 5.0	27260701
eCl@ss 5.1	27141190
eCl@ss 6.0	27260704
eCl@ss 7.0	27440402
eCl@ss 8.0	27440401

ETIM

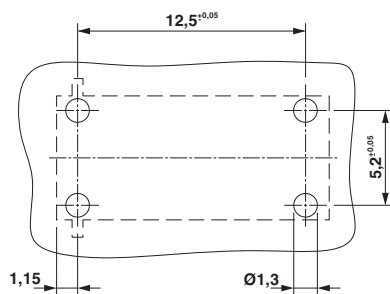
ETIM 3.0	EC001121
ETIM 4.0	EC002643
ETIM 5.0	EC002643

UNSPSC

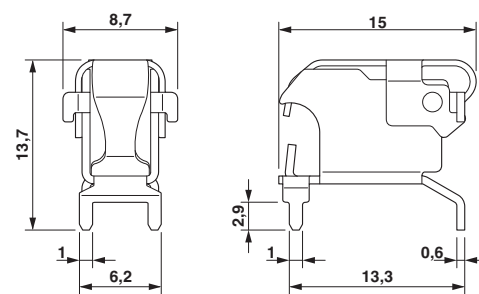
UNSPSC 6.01	30211810
UNSPSC 7.0901	39121409
UNSPSC 11	39121409
UNSPSC 12.01	39121409
UNSPSC 13.2	39121409

Drawings

Drilling diagram



Dimensioned drawing



Single PCB terminal block - PTSPLO-6/1-2X2 2,9 R32 - 1705085

Diagram

