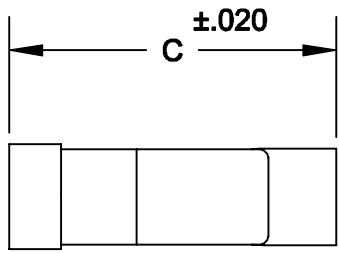
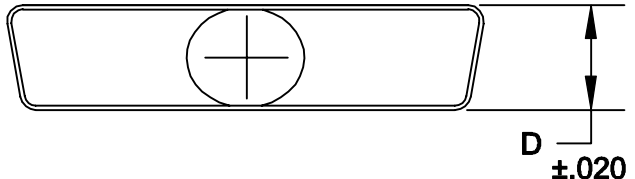
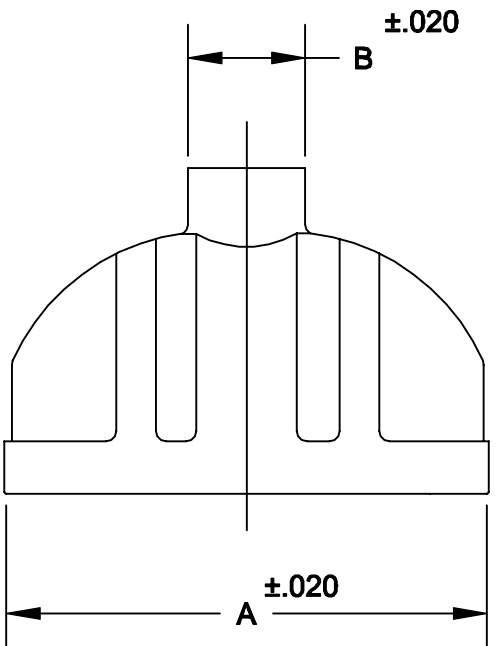


DESCRIPTION: 986 SERIES OVER-MOLD CANS



986-XXX-XXX-XX1

SERIES \_\_\_\_\_

POSITIONS \_\_\_\_\_

009 \_\_\_\_\_

015 \_\_\_\_\_

025 \_\_\_\_\_

037 \_\_\_\_\_

050 \_\_\_\_\_

MATERIAL \_\_\_\_\_

COLD ROLLED STEEL

PLATING: \_\_\_\_\_

12 = NICKEL

PUT-UPS \_\_\_\_\_

1 = KIT

	A	B	C	D	MAX. CABLE DIA.
9	.815	.410	1.200	.490	.375
	20.70	10.41	30.48	12.45	9.50
15	1.150	.410	1.200	.490	.375
	29.21	10.41	30.48	12.45	9.50
25	1.690	.410	1.200	.490	.375
	42.93	10.41	30.48	12.45	9.50
37	2.340	.610	1.650	.490	.575
	59.44	15.49	41.91	12.45	14.60
50	2.240	.580	1.650	.600	.575
	56.90	14.73	41.91	15.24	14.60

NOTE: WHEN USED WITH NORCOMP 170/171 SERIES CONNECTORS AND TOOLING, AN AXIAL PULL OF 35-40 LBS. CAN BE ACHIEVED.

MATERIAL: STEEL  
PLATING: TIN

	THESE DRAWINGS AND SPECIFICATIONS ARE THE PROPERTY OF NorComp AND SHALL NOT BE REPRODUCED, COPIED OR USED AS THE BASIS FOR THE MANUFACTURE OF SALE OF APPARATUS WITHOUT WRITTEN PERMISSION.		DRAWN: <b>WAYNE ROBBINS</b>	DATE: <b>10-4-98</b>	
	<h1>NorComp</h1>			CHECKED:	DATE:
SCALE: 1:1				SHEET 1 OF 1	REV 2
DWG NO. <b>986-XXX-020-121</b>					