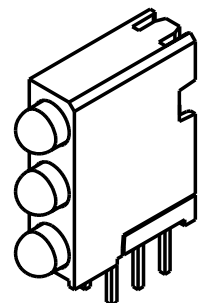


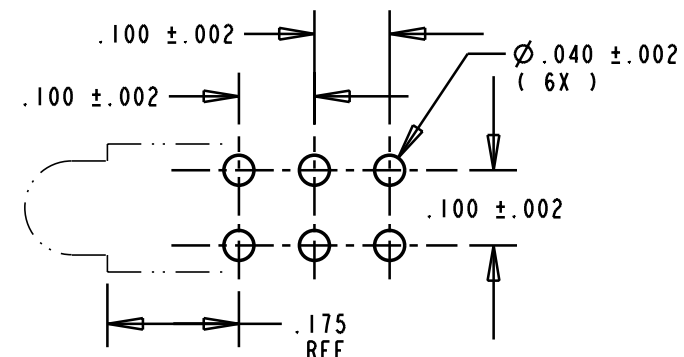
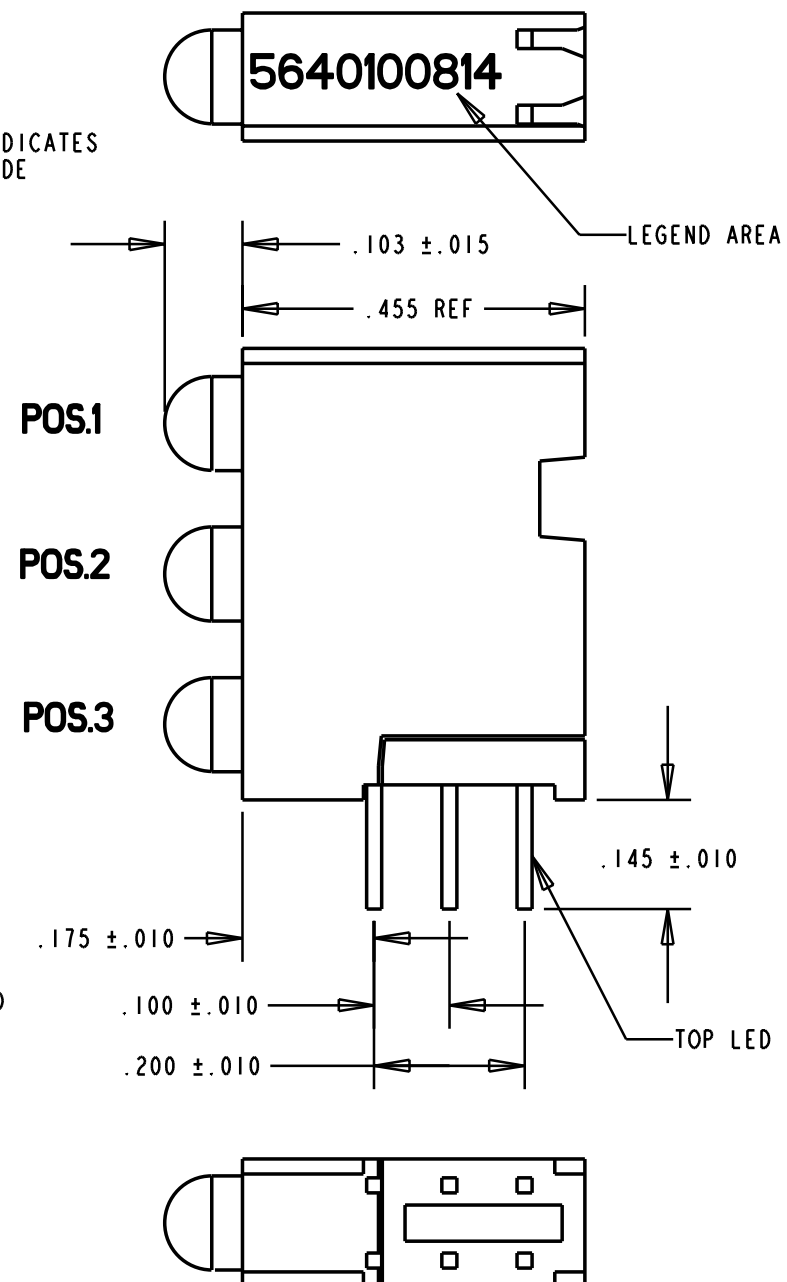
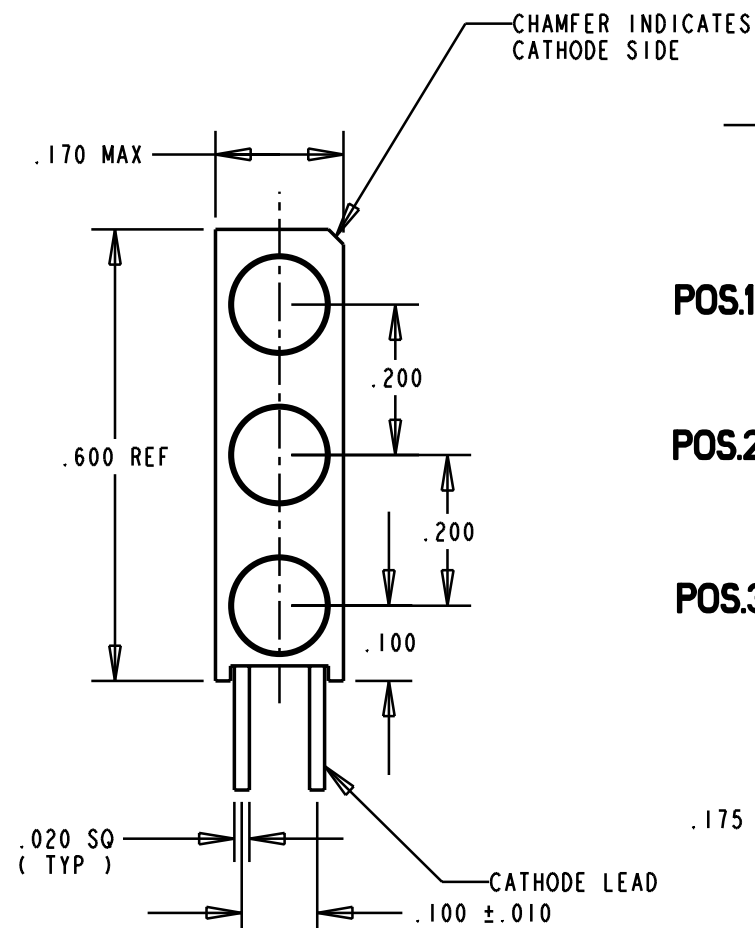
PART NUMBER and LEGEND	LED COLOR		
	POSITION 1	POSITION 2	POSITION 3
564-0100-814	GREEN DIFFUSED	GREEN DIFFUSED	GREEN DIFFUSED



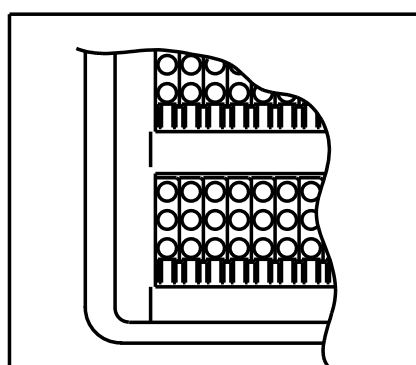
REV.	ECN NO.	REVISIONS	DRN.	CKD.	APP.	DATE
A		NEW RELEASE	AV	DC	N.O.	3-1-99
B		REORIENTED PRINTING	TC			

LED COLOR = GREEN					
OPERATING CHARACTERISTICS AT 25°C AMBIENT					
CHARACTERISTICS	MIN	TYP	MAX	UNITS	TEST CONDITIONS
LUMINOUS INTENSITY	4.7	12.6		mcd	$I_f = 10 \text{ mA}$
FORWARD VOLTAGE		2.1	2.8	V	$I_f = 20 \text{ mA}$
REVERSE CURRENT			100	μA	$V_R = 5 \text{ V}$
PEAK WAVELENGTH		565		nm	
VIEWING ANGLE		60		Degree	

ABSOLUTE MAXIMUM RATING AT 25°C AMBIENT		UNITS	
POWER DISSIPATION		mW	100
DERATE LINEARLY FROM 50°C		$\text{mW}/^\circ\text{C}$	0.4
CONTINUOUS FORWARD CURRENT		mA	30
PEAK FORWARD CURRENT (1/10 DUTY CYCLE, 0.1 ms PULSE WIDTH)		mA	120
LEAD SOLDERING TEMPERATURE, 5 SEC., 1/16" FROM BODY		°C	260
OPERATING TEMPERATURE		°C	-55 TO 100
STORAGE TEMPERATURE		°C	-55 TO 100



RECOMMENDED HOLE PATTERN



TRAY PACKAGING

NOTES:

- LEADS TO FIT INTO HOLES SPACED AS PER HOLE PATTERN
- LEADS TO BE FREE OF DEFORMATION AFTER BENDING AND CUTTING
- LED LEAD DIMENSIONS SHOWN ARE MEASURED AT HOUSING EXIT
- PACKAGING :
BLOCKS PLACED IN CLEAR ANTISTATIC TRAYS
230 BLOCKS PER TRAY / 10 TRAYS PER BOX / 2300 BLOCKS PER BOX
PLUS 1 EMPTY COVER TRAY
- DIALIGHT PART NUMBER = 564-0100-814

THIS DRAWING AND THE CONTENTS HEREIN ARE CONFIDENTIAL AND THE SOLE PROPERTY OF DIALIGHT. REPRODUCTION OF THIS DRAWING OR CONSTRUCTION OF ANY PARTS WITHIN THIS DRAWING ARE FORBIDDEN WITHOUT THE WRITTEN CONSENT OF DIALIGHT.

SCALE 4:1	DRAWING NUMBER	REV
ALL DIM'S IN: INCHES	C-16489	B
TOLERANCES: UNLESS OTHERWISE SPECIFIED	TITLE STANDARD 3X1 CBI BLOCK	
FRACTIONS: $\pm 1/64$	MATERIAL	
DECIMALS (.XX): $\pm .020$		
DECIMALS (.XXX): $\pm .015$		
DECIMALS (.XXXX): $\pm .010$	1913 ATLANTIC AVE. MANASQUAN, N.J. 08736	
ANGLES: $\pm 3^\circ$	FAMILY TABLE:	
FINISH:	FSCM 83330	SHEET OF