

RESETTABLE CIRCUIT BREAKER

PILOT LIGHT

482.60 mm [19.000 in]

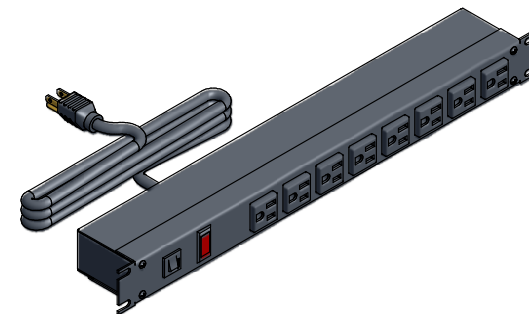
43.64 mm [1.718 in]

165.10 mm [6.500 in]

38.10 mm TYP [1.500 in]

76.20 mm TYP [3.000 in]

ASSEMBLY - VIEW FROM FRONT



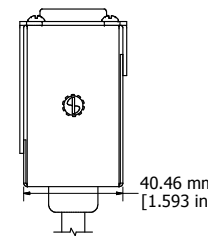
ISOMETRIC VIEW

19.05 mm [0.750 in] 444.50 mm [17.500 in] 5.08 mm [0.200 in]

67.58 mm [2.661 in]

6' FOOT POWER CORD (NEMA 5-15P)

ASSEMBLY - VIEW FROM BOTTOM



40.46 mm [1.593 in]

ASSEMBLY - VIEW FROM SIDE

10.31 mm [0.406 in] 461.98 mm [18.188 in] 5.97 mm [0.235 in]

31.70 mm [1.248 in]

127.00 mm [5.000 in]

SECTION A-A

R3.18 mm [0.125 in]

1582T6A1BK
Finish - Front - Black Painted Steel
Back - Black Painted Steel
Rated - 125 VAC, 60 Hz, 15 Amps
Approvals - CSA Certified Standards C22.2 (No. 21-95, 42-99)
- UL Recognized Standard UL1363
Colours & Cord Length
1582T6A1BK - Black w/ 6' Foot Power Cord (NEMA 5-15P)
1582T6A1- ASA 61 Grey w/ 6' Foot Power Cord (NEMA 5-15P)
1582T6B1BK - Black w/ 15' Foot Power Cord (NEMA 5-15P)
1582T6B1- ASA 61 Grey w/ 15' Foot Power Cord (NEMA 5-15P)



HAMMOND MANUFACTURING™

1582T6A1BK

www.hammondmfg.com