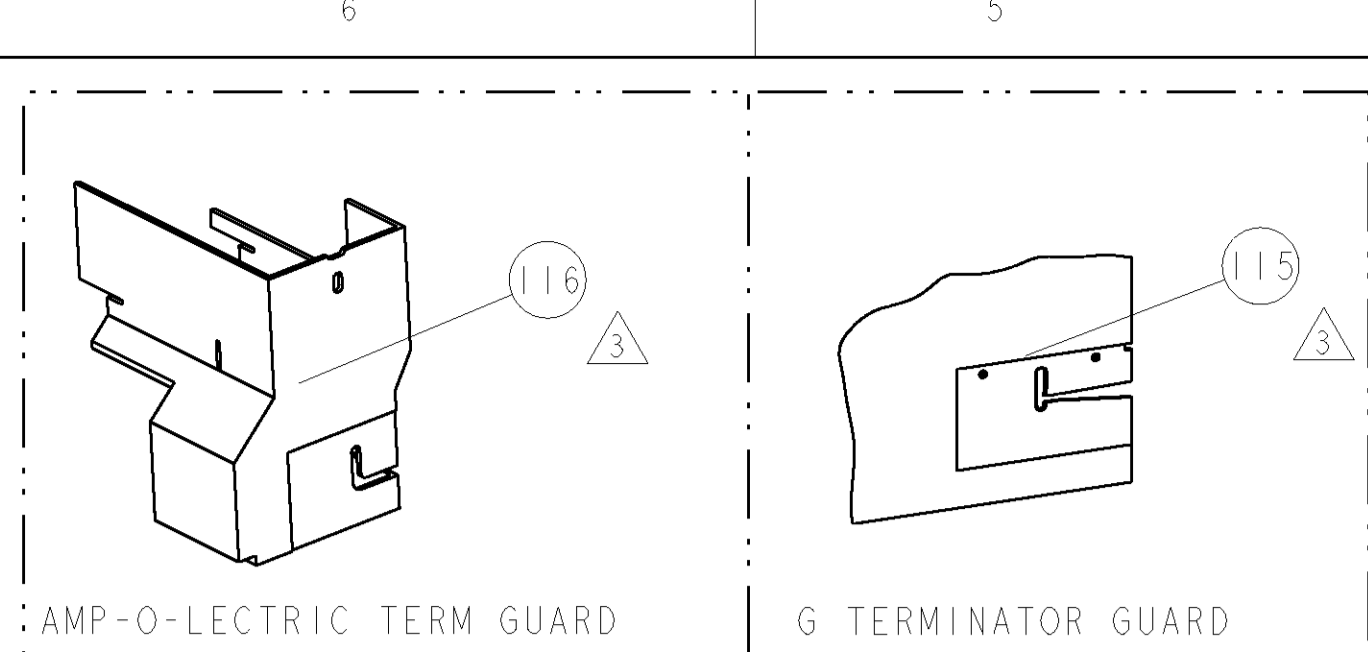


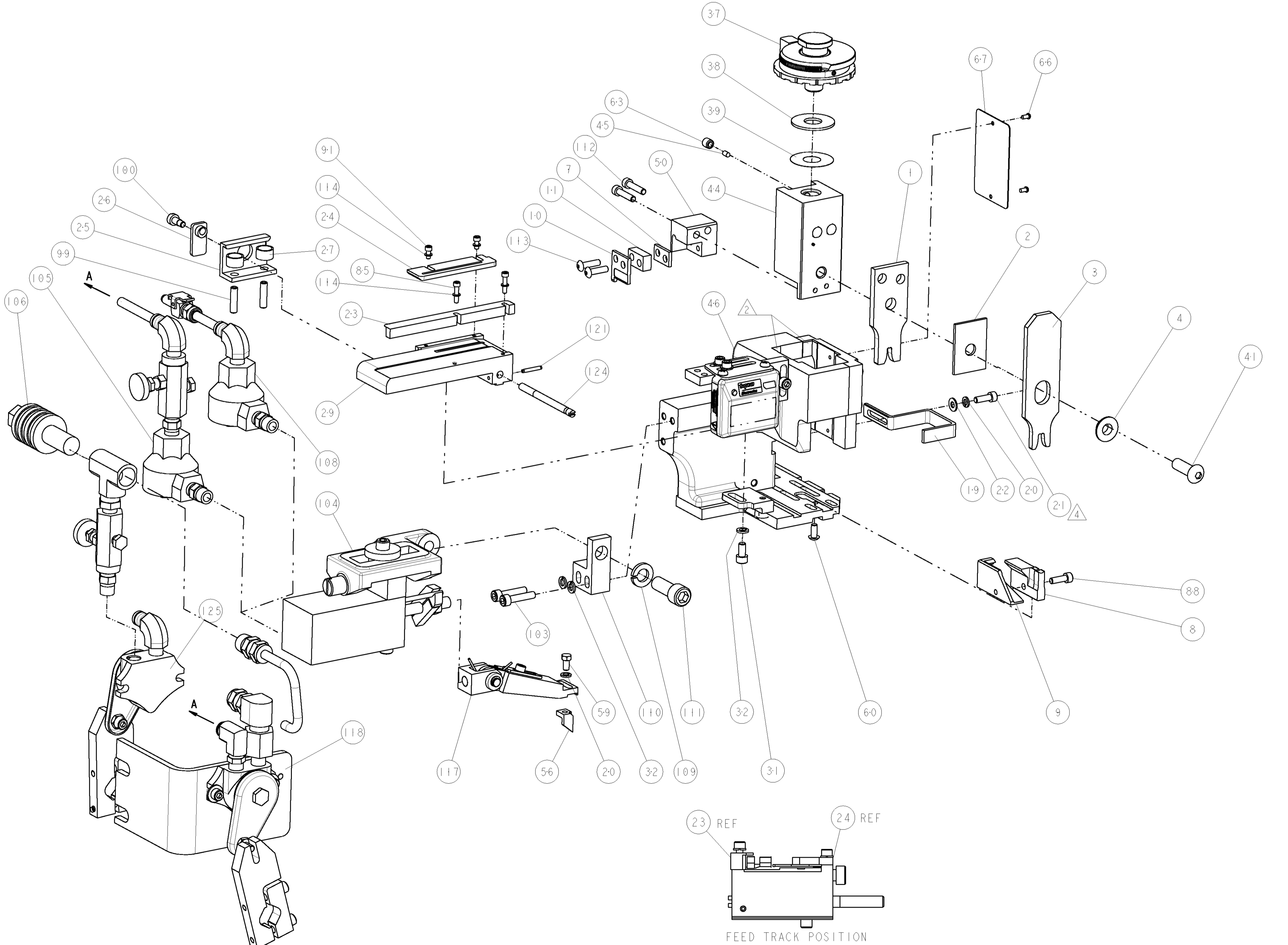
PART NUMBER	REV	FIRST USED	POWER UNIT	FEED TYPE	DESCRIPTION
1855257-1	B	122500-1	LEADMAKER	AIR FEED	CUTS CARRIER
1855257-2	B	565435-5	BENCH MODEL K	AIR FEED	CUTS CARRIER
1855257-3	B	354500-1	BENCH MODEL G	AIR FEED	CUTS CARRIER
7-1855257-7	A	-	-	-	SPARE PARTS



TYCO PN		MANUF PN		PACKARD TERM - PACKARD CRIMP SPECS		REF SETTING
1949336-1	-	12015907	-	CRIMP HEIGHT	WIRE SIZE	B5
-	-	-	-	2.25±0.05mm [.089±.002]	2mm2	-
-	-	-	-	2.10±0.05mm [.083±.002]	1mm2	C5
CRIMP		SIZE	TYPE	RANGE		
-	-	WIRE 3.68mm [.145]	F	1.00-2.00 mm2		
-	-	INSUL 5.08mm [.200]	F	Ø3.97 mm MAX		
WIRE STRIP LENGTH	TERM APPL SPEC	FEED	APPLICATOR INSTRUCTIONS	SET UP GAGE		
8.1mm	NONE	19.86mm	408-8040	458637-1		

- △ RECOMMENDED SPARE PARTS
- △ GREASE LIGHTLY
- △ GUARD MUST BE IN PLACE WHEN OPERATING APPLICATOR IN A BENCH MACHINE
- △ INSTALL ITEMS 101, 102 & 119 ON SIDE OF STRIPPER ON APPL HOUSING USING ITEM 21.

*** WARNING**
 ON INSTALLATION, SET WIRE DISC TO LARGEST WIRE SIZE SETTING. USE OF SETTINGS BELOW MIN. REQUIRED CRIMP HEIGHT SETTING WILL CAUSE DAMAGE TO CRIMP TOOLING.



QTY	UNIT	PART NO	DESCRIPTION	DATE	BY	CHK
-	-	455350-4	AIR BLAST ASS'Y	125		
-	-	690432-3	ADJUSTMENT SCREW	124		
-	-	3-21028-8	PIN, SLOTTED SPRING .094 X .625	121		
-	-	27319-4	TUBING, POLY-FLO, NATURAL	119		
-	-	692655-6	AIR FEED VALVE ASSEMBLY	118		
-	-	461062-1	FEED FINGER ASSEMBLY	117		
-	-	455749-1	GUARD WINDOW	116		
-	-	679532-1	INSERT, GUARD	115		
-	-	21024-2	WASHER, SPRG LOCK, REG NO 4	114		
-	-	2-21002-3	SCR, BTN SKT HD CAP 8-32 X .625	113		
-	-	2-21000-9	SCR, SKT HD CAP 8-32 X .750	112		
-	-	3-21001-5	SCR, SKT HD CAP 3/8-16 X 1.000	111		
-	-	459610-1	MOUNT, FEED BRACKET	110		
-	-	21024-8	WASHER, SPRG LOCK, REG 3/8	109		
-	-	692655-7	AIR FEED VALVE ASSEMBLY	108		
-	-	24042-2	VALVE, SLEEVE, 3-WAY	106		
-	-	692655-5	AIR FEED VALVE ASSEMBLY	105		
-	-	461065-1	ASSEMBLY, AIR FEED	104		
-	-	3-21000-8	SCR, SKT HD CAP 10-32 X .875	103		
-	-	986220-3	CLAMP, CABLE, BLACK	102		
-	-	23238-1	INSERT, COUPLING	101		
-	-	22353-8	SCR, SHLD, SLOT HD, 3/16 DIA	100		
-	-	5-21006-6	SCR, SET, CUP POINT 10-32 X .750	99		
-	-	1-21000-3	SCR, SKT HD CAP 4-40 X .250	91		
-	-	2-21000-7	SCR, SKT HD CAP 8-32 X .500	88		
-	-	1-21000-5	SCR, SKT HD CAP 4-40 X .500	85		
-	-	4088040	SF APPL INST 408-8040	72		
-	-	217238-1	GENERAL INSTRUCTION PKG	71		
-	-	461264-5	PLATE, IDENTIFICATION	67		
-	-	21017-2	SCREW, DRIVE	66		
-	-	21009-2	SCR, SET, SELF LOCKING 1/4-20 X .250	63		
-	-	22733-8	SCR, BHSC, SELF-LOCKING, 8-32 X .375	60		
-	-	2-22603-0	FEED, HEX HD CAP 8-32 X .312	59		
-	-	2-694433-8	FEED PAWL	56		
-	-	1633513-2	HOLDER, SLUG BLADE	50		
-	-	1633399-1	APPL., BASIC AIR FEED SUB ASSY	46		
-	-	690191-1	PLUG, NYLON	45		
-	-	1-455673-4	RAM, SIDE FEED	44		
-	-	7-21002-9	SCR, BTN SKT HD CAP 5/16-24 X 1.00	41		
-	-	469367-2	SHIM	39		
-	-	1-469367-4	SHIM	38		
-	-	879103-3	FINE ADJUST HEAD ASSEMBLY	37		
-	-	21024-5	WASHER, SPRG LOCK, REG NO 10	32		
-	-	3-21000-4	SCR, SKT HD CAP 10-32 X .375	31		
-	-	3-844048-1	PLATE, REAR STRIP GUIDE	29		
-	-	22284-1	SPRING, COMPRESSION	27		
-	-	356835-1	LEVER, DRAG RELEASE	26		
-	-	240792-1	DRAG, TERMINAL	25		
-	-	1633497-2	REAR STRIP GUIDE	24		
-	-	2-189124-1	GUIDE, FRONT STRIP	23		
-	-	21055-6	WASHER, FLAT, REG NO 8	22		
-	-	2-21000-7	SCR, SKT HD CAP 8-32 X .500	21		
-	-	21024-4	WASHER, SPRG LOCK, REG NO 8	20		
-	-	1-458230-8	STRIPPER	19		
-	-	2-240641-2	SPACER	11		
-	-	1633512-3	BLADE, SLUG	10		
-	-	1-1633124-0	PLATE, REAR SHEAR	9		
-	-	1-1633507-2	ANVIL, SPECIAL, COMBINATION	8		
-	-	240641-9	SPACER	7		
-	-	3-238009-3	BLOCK, FL CRIMPER SPACER	4		
-	-	6-1213077-0	CRIMPER, INSULATION PREMIUM	3		
-	-	1-455888-7	SPACER, CRIMPER	2		
-	-	7-1673600-1	CRIMPER, WIRE	1		

DIMENSIONS: INCHES		TOLERANCES UNLESS OTHERWISE SPECIFIED:		DWN B HIGMAN 02JAN2007		CHK B HIGMAN 02JAN2007		APVD T BENCHOFF 02JAN2007		NAME		PRODUCT SPEC		APPLICATION SPEC		SIZE CAGE CODE DRAWING NO		RESTRICTED TO			
9 PLC ±.01		1 PLC ±.001		3 PLC ±.0001		4 PLC ±.0001		ANGLES ±.0001		FINISH		WEIGHT		CUSTOMER DRAWING		SCALE 3:5		SHEET 1 OF 1		REV B	
MATERIAL										FINISH											
MATERIAL										FINISH											

CUSTOMER VIEWABLE ASSEMBLY