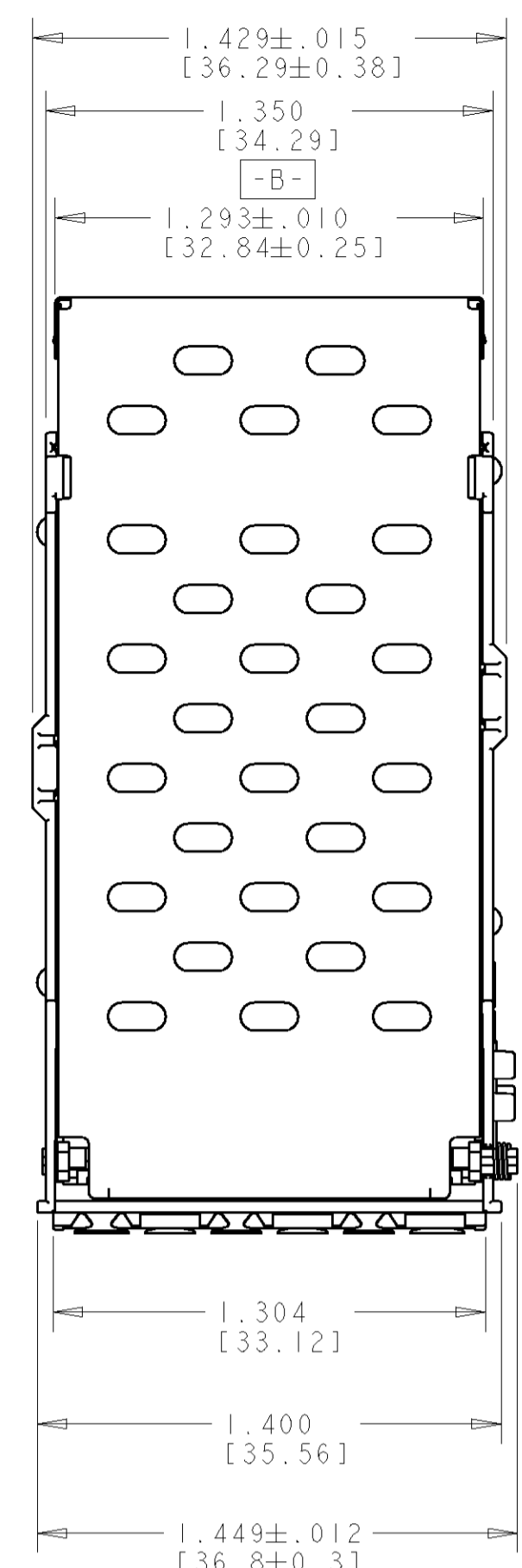
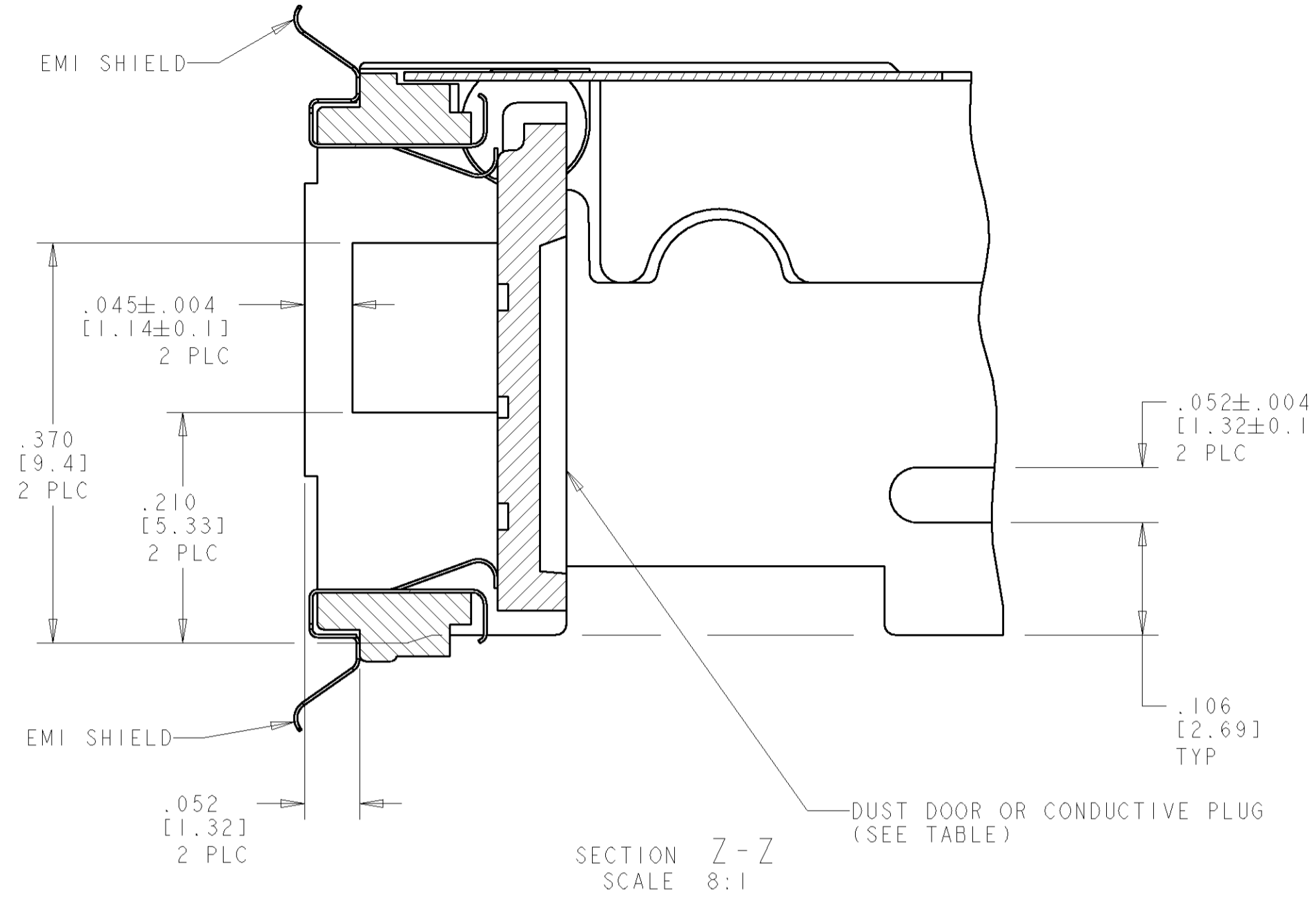
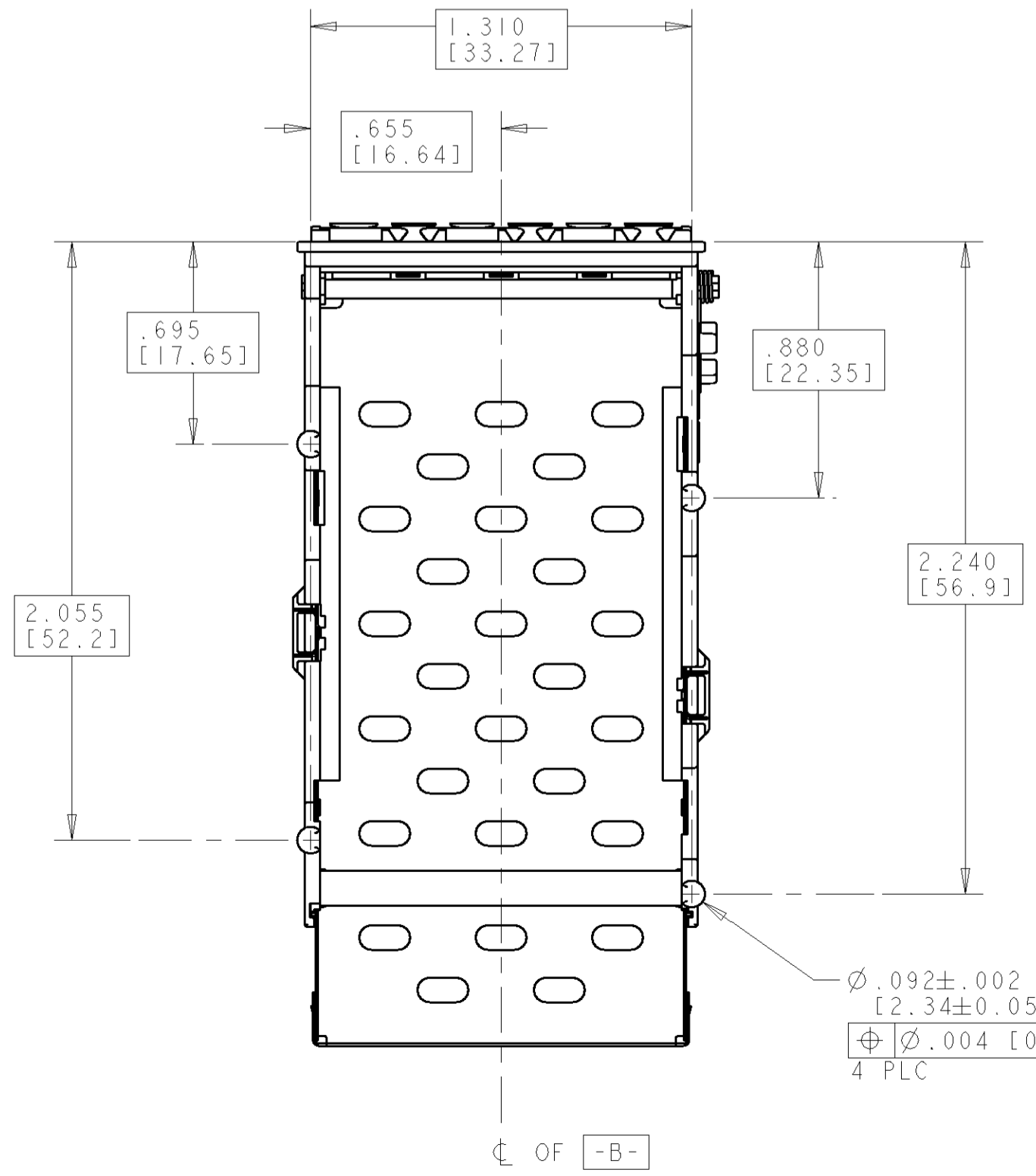
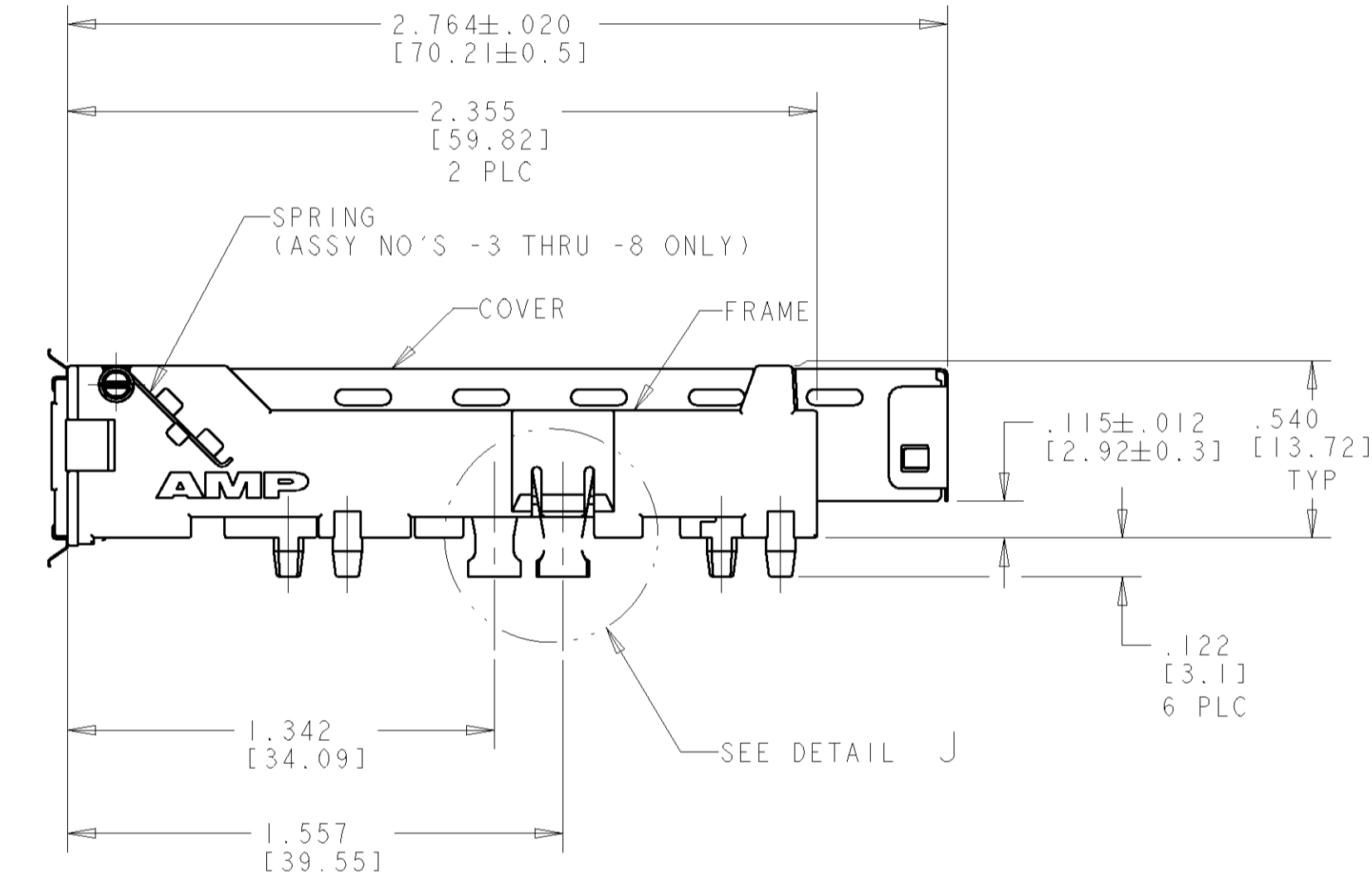
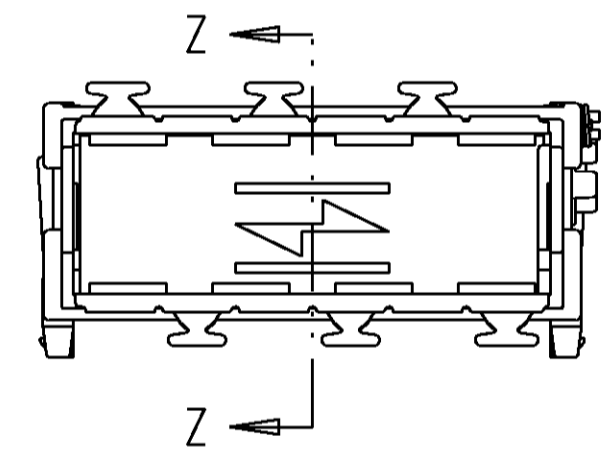
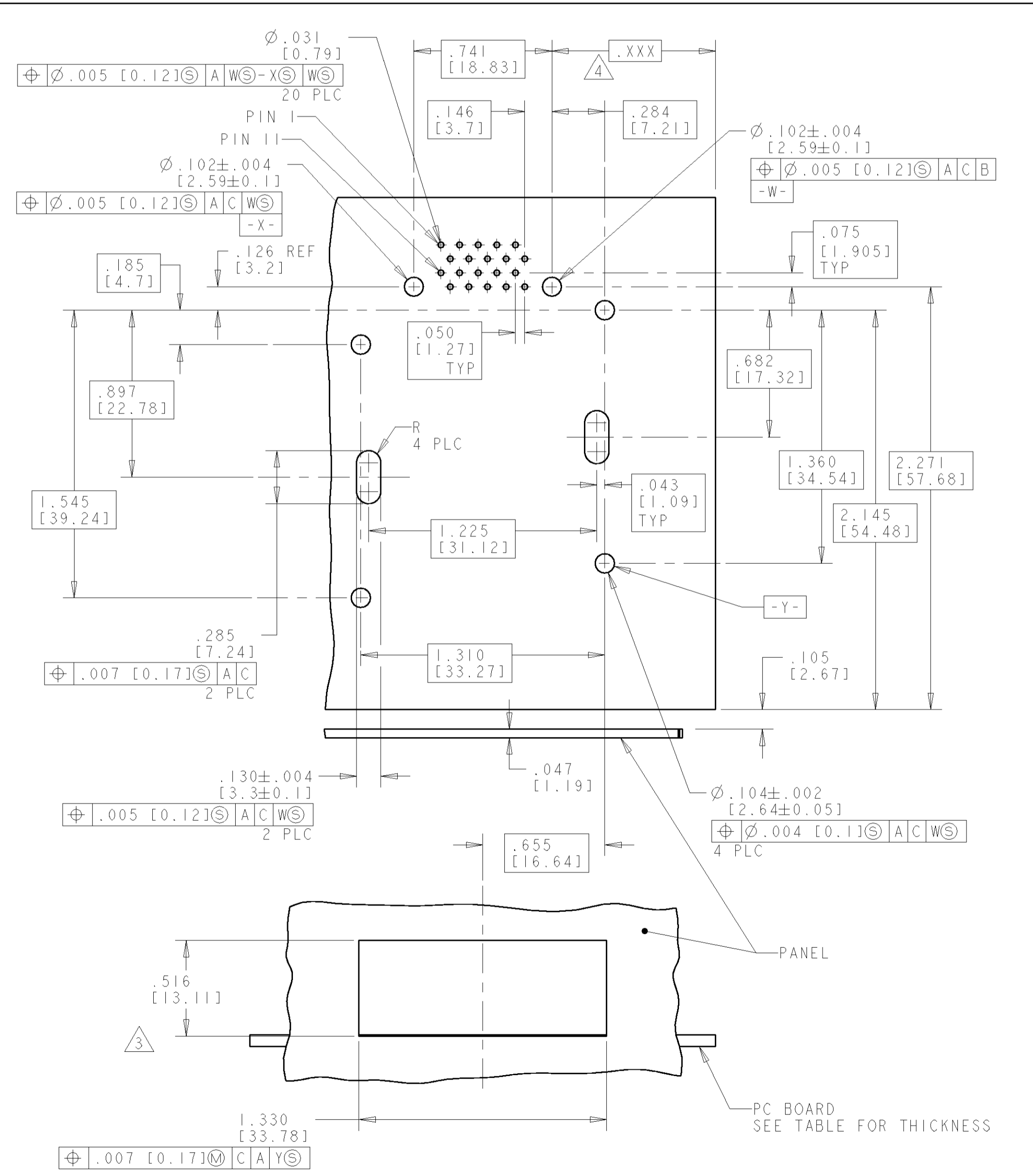


LOC	DIST	REV	DESCRIPTION	DATE	BY	APPD
GP	00	A	RELEASED	11JULY05	BM	SS



- 1 DUST DOOR: ZINC ALLOY.
 FRAME: ZINC ALLOY.
 EMI SHIELD: PHOSPHOR BRONZE.
 COVER: PHOSPHOR BRONZE.
 SPRING: STAINLESS STEEL.
- 2 DUST DOOR: .00010[0.00254] MIN NICKEL OVER .000200[0.00508] MIN COPPER.
 EMI SHIELDS: .000050[0.00127] MIN NICKEL.
 FRAME: .000150[0.00381] MIN TIN OVER .000100[0.00254] MIN NICKEL
 OVER .000200[0.0051] MIN COPPER.
 COVER: .000016[0.00040] MIN PRE-PLATED TIN
- 3 LOWER EDGE OF PANEL OPENING IS .006±.003[0.15±0.08] BELOW TOP OF PCB.
- 4 THIS DIMENSION ESTABLISHED BY CUSTOMER.



METAL DOOR	.100±.006 [2.54±0.15]	5390317-4
DUST DOOR OR CONDUCTIVE PLUG	CUSTOMER PCB THICKNESS	PART NUMBER
DWN B. MCMASTER 11JULY05 ENR S. SHUEY 11JULY05 APPD S. SHUEY 11JULY05 PRODUCT SPEC APPLICATION SPEC WEIGHT CUSTOMER DRAWING		
AMP Incorporated Harrisburg, PA 17105-3608 NAME GUIDE ASSEMBLY, DIE-CAST, LONG COVER, MEDIA CONVERTER MODULE, CHAMP BLINDMATE SIZE CAGE CODE DRAWING NO. RESTRICTED TO A 100779 C-5390317 SCALE 2:1 SHEET 1 OF 1 REV A		