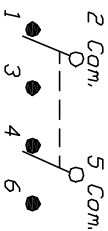


RECOMMENDED PCB LAYOUT

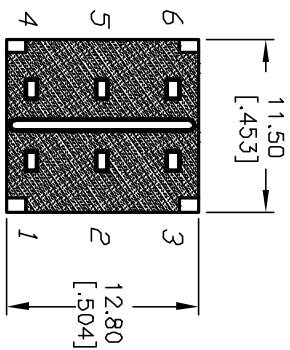
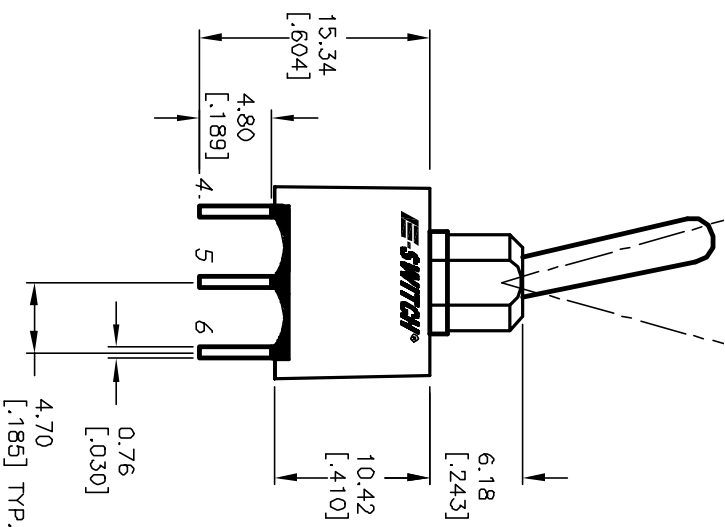
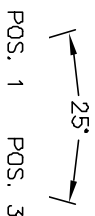
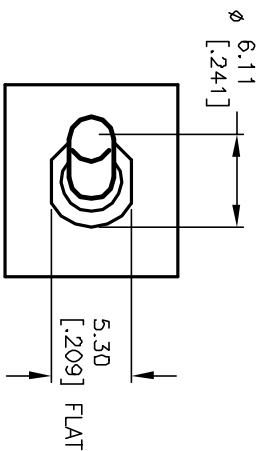


DPDT CIRCUIT CONTACT CONFIGURATION

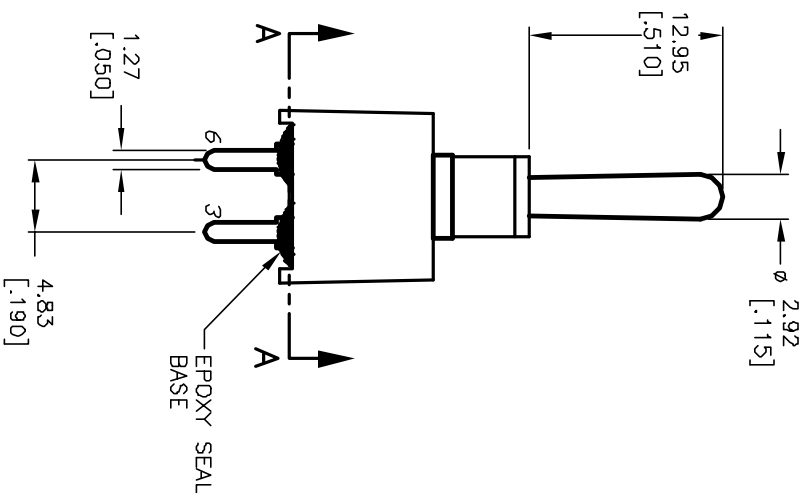
SWITCH FUNCTION		
POS. 1	POS. 2	POS. 3
DN	N/DNE	DN
2-3, 5-6	DPEN	2-1, 5-4

NOTES:

1. ALL DIMENSIONS IN MM [INCH]
2. GENERAL TOLERANCE: X.XX=±0.4 X.XXX=±0.25
3. TERMINAL NUMBERS FOR REF ONLY
4. RATING: 5A @120VAC or 28VDC 2A @250VAC (w/RESISTIVE LOAD)
5. FIXED TERM. & MOVING CONTACT: Cu Alloy w/Silver plate
6. ELECTRIC LIFE: 40 000 make-and-break cycles at full load.
7. INSULATION RESISTANCE: 1,000 Mega-ohm min.
8. DIELECTRIC STRENGTH: 1,000 V RMS @sea level.
9. OPERATING TEMP.: -30°C to 85°C



SECTION A-A



REV. C	ECN NO. 11597	REVISED NOTES	3/1/02	DATE	CB	CHK'D
DESCRIPTION						
THE INFORMATION CONTAINED IN THIS DOCUMENT IS PREPARED FOR THE SWITCH AND IS NOT TO BE COPIED OR TRANSMITTED						

TITLE	100A WDP-1 T1 B4 M2 Q E	SCALE	2:1	DATE	6/22/99	DR	MM	DWG	T102104	REV	C
-------	-------------------------	-------	-----	------	---------	----	----	-----	---------	-----	---

