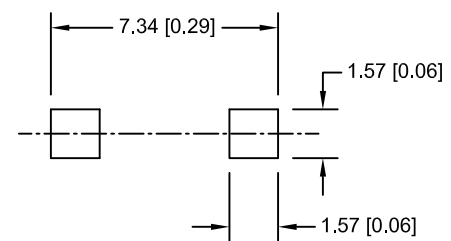
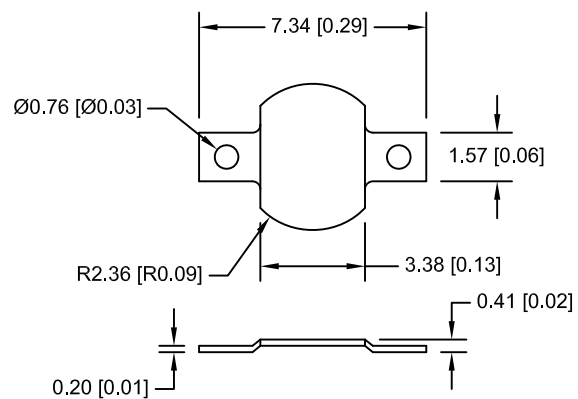



Date	SYM	REVISION RECORD	AUTH	DR.	CK.



PCB LAYOUT

NOTES:

1. MATERIAL:
0.20mm BRASS, NICKLE PLATED
2. ROHS COMPLIANT

Tolerance (Except as noted)		Memory Protection Devices, Inc	
		200 Broad Hollow Road, Farmingdale, New York 11735	
decimal ±.5 (.020)		Scale	Drawn By B.S.
			Approved By T.B.
Fractional ± .8 (.030)	Title	COIN CELL SM NEGATIVE CONTACT	
Angular ± 3°	Date	Drawing Number	
	12/02/11	BK-2982	