

PART NUMBER	REV	FIRST USED	TERMINATOR	FEED TYPE	DESCRIPTION
1426090-1	B	-	LEADMAKER	MECH POST FEED	CUTS CARRIER
1426090-2	B	-	BENCH	MECH PRE FEED	CUTS CARRIER
1426090-6	B	-	LEADMAKER	MECH POST FEED	CONTINUOUS CARRIER
7-1426090-1	B	-	LEADMAKER	MECH POST FEED	-1 AND SPARE PARTS
7-1426090-2	B	-	BENCH	MECH PRE FEED	-2 AND SPARE PARTS
7-1426090-6	B	-	LEADMAKER	MECH POST FEED	-6 AND SPARE PARTS
7-1426090-7	A	-	-	-	SPARE PARTS KIT

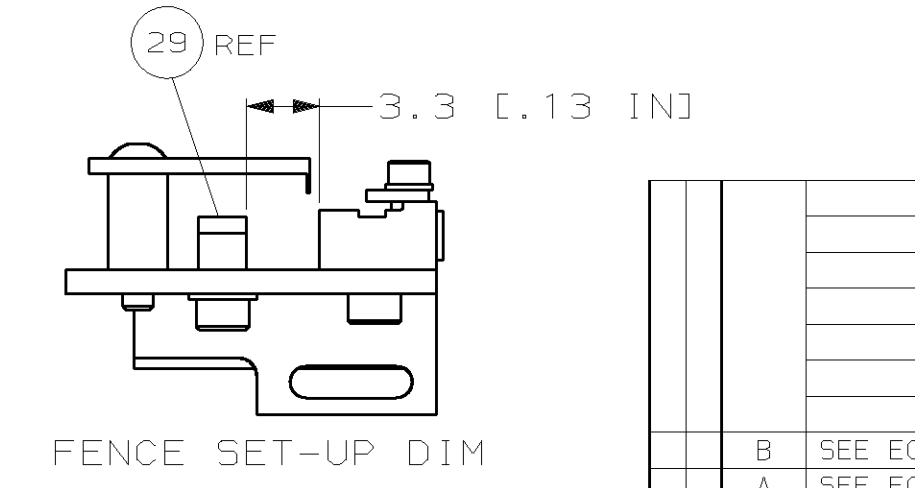
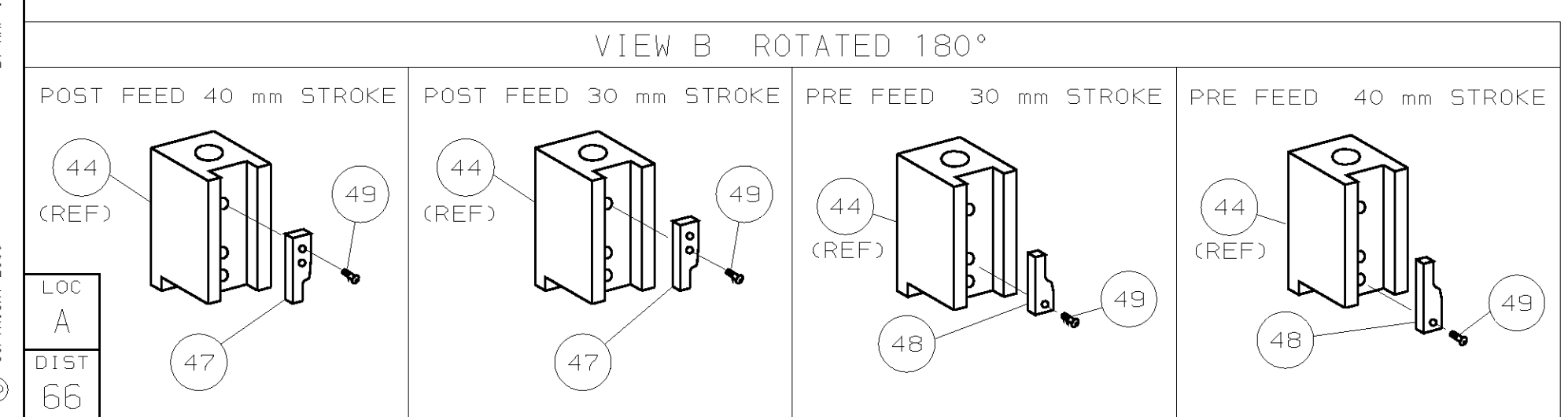
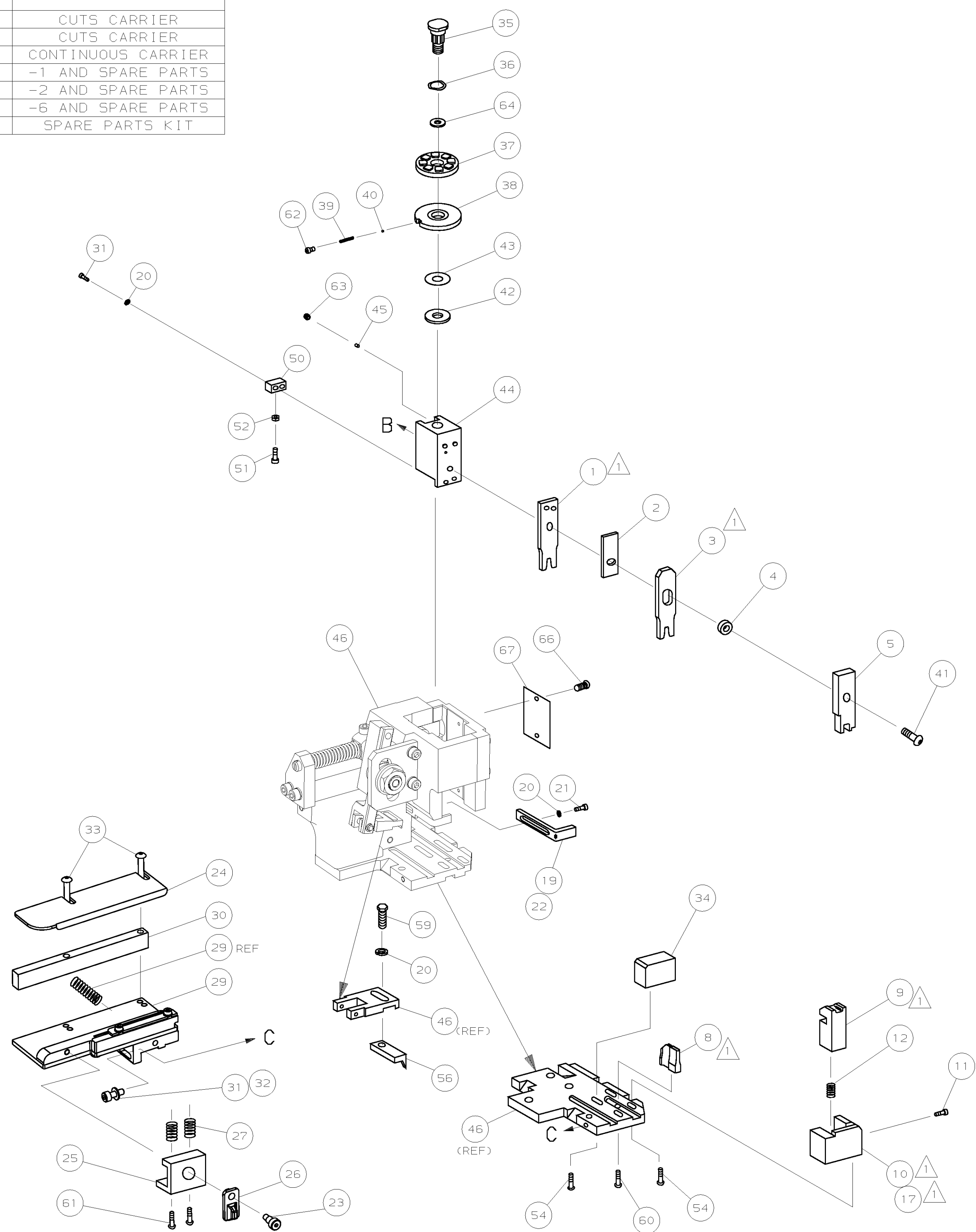
CRIMP DATA (NON-AMP TERMINAL-CUST SPEC)			
TERMINAL NAME: MTA-C 100 CRIMP CONTACT (ADAM TECHNOLOGIES)			
CRIMP	SIZE	TYPE	RANGE
WIRE	1.27 [.050 IN]	F	24 AWG
INSUL	1.78 [.070 IN]	F	1.20 [.047 IN]
WIRE STRIP LENGTH		APPL INSTRUCTION	
2.50-3.30 [.098-.130 IN]		408-8322	

TERMINAL	FEED
APPL SPEC 114-3118	5.08 [.200 IN]

TERMINALS APPLIED				
TERM MANU P/N	AMP P/N	-	-	-
MTA-C-R	286887-1	-	-	-
-	-	-	-	-
-	-	-	-	-
-	-	-	-	-
-	-	-	-	-
-	-	-	-	-
-	-	-	-	-
-	-	-	-	-
-	-	-	-	-

WIRE SIZE	CRIMP HEIGHT	PIN PN & LENGTH [IN]
24 AWG	0.80 ±0.05 [.031 ±.002 IN]	4-354779-6 (.3220)
-	-	-
-	-	-
-	-	-
-	-	-
-	-	-
-	-	-
-	-	-
-	-	-
-	-	-
-	-	-
-	-	-
-	-	-
-	-	-
-	-	-
-	-	-
-	-	-
-	-	-
-	-	-
-	-	-
-	-	-

- ⚠️ RECOMMENDED SPARE PARTS.
- 2. GREASE RAM, CAM, CAM FOLLOWER AND FEED ROD LIGHTLY.
- 3. LUBRICATE DAILY PER THE APPLICATOR INSTRUCTION SHEET SUPPLIED WITH THE APPLICATOR.
- 4. 1.5mm NOMINAL INSULATION CRIMP HEIGHT.
- 5. CRIMP DATA QUOTED ON THIS LOG IS AS SPECIFIED BY CUSTOMER AND NOT AS CALCULATED BY AMP.



								QTY	REV	DESCRIPTION	ITEM NO
-	1	1	1	1	1	1	1	1426090		PRINT, APPLICATOR LOG SHEET	73
-	1	1	1	1	1	1	1	1338705-1		DOCUMENTATION PACKAGE	71
-	-	-	-	-	-	-	-				70
-	-	-	-	-	-	-	-				69
-	-	-	-	-	-	-	-				68
-	1	1	1	1	1	1	1	461264-1		PLATE, IDENTIFICATION	67
-	2	2	2	2	2	2	2	21017-2		SCR,DRIVE (#2x.19) ID PLATE	66
-	-	-	-	-	-	-	-				65
-	1	1	1	1	1	1	1	986950-1		WASHER, FLAT PRECISION	64
-	1	1	1	1	1	1	1	3-18031-0		SCR,SKT SET (M6X6) RAM	63
-	1	1	1	1	1	1	1	18023-9		SCR,SHC (M4X6) INS DISC	62
-	2	2	2	2	2	2	2	1-18024-5		SCR,BHC (M5X25) DRAG	61
-	1	1	1	1	1	1	1	18024-7		SCR,BHC (M4X10) ANVIL	60
-	1	1	1	1	1	1	1	5-18022-2		SCR,HEX (M4X8) FEED FINGER	59
-	-	-	-	-	-	-	-				58
-	-	-	-	-	-	-	-				57
-	1	1	1	1	1	1	1	1338685-1		PAWL, FEED	56
-	-	-	-	-	-	-	-				55
-	4	4	4	4	4	4	4	18024-8		SCR,BHC (M4X12) SHEAR HOLDER	54
-	-	-	-	-	-	-	-				53
-	1	1	1	1	1	1	1	18030-1		NUT, HEX (M3) HOLD DOWN	52
-	1	1	1	1	1	1	1	811242-5		BUMPER, HOLDDOWN	51
-	1	1	1	1	1	1	1	690753-2		SPACER, TONKER	50
-	1	1	1	1	1	1	1	18024-3		SCR,BHC (M3X10) CAM	49
-	-	-	-	-	-	-	-				48
-	1	1	1	1	1	1	1	1338675-1		CAM, PRE FEED 30 & 40 mm ST	48
-	1	1	1	1	1	1	1	1338676-1		CAM, POST FEED 30 & 40 mm ST	47
-	1	1	1	1	1	1	1	1320999-3		APPLICATOR BASIC SUBASSY	46
-	1	1	1	1	1	1	1	690191-1		PLUG, NYLON	45
-	1	1	1	1	1	1	1	1338660-1		RAM	44
-	1	1	1	1	1	1	1	690125-1		WASHER, LAMINATED	43
-	1	1	1	1	1	1	1	690124-1		WASHER, RAM	42
-	1	1	1	1	1	1	1	2-18024-6		SCR,BHC (M8X25) RAM	41
-	1	1	1	1	1	1	1	23241-1		BALL, STEEL	40
-	1	1	1	1	1	1	1	2-22278-7		SPRING, COMPRESSION	39
-	1	1	1	1	1	1	1	1320922-1		DISC, INSULATION	38
-	1	1	1	1	1	1	1	354777-1		WIRE DISC, PLASTIC	37
-	1	1	1	1	1	1	1	22480-5		WASHER, SPRING	36
-	1	1	1	1	1	1	1	690212-1		POST, RAM	35
-	1	1	1	1	1	1	1	1320934-1		SUPPORT, TERMINAL	34
-	2	2	2	2	2	2	2	1-18024-0		SCR,BHC (M4X20) STRIP GUIDE	33
-	1	1	1	1	1	1	1	18027-2		WASHER, FLAT (M4)	32
-	3	3	3	3	3	3	3	1-18023-2		SCR,SKT CAP (M4X12) MOUNT BLOCK	31
-	1	1	1	1	1	1	1	1320908-9		SPACER, STRIP GUIDE	30
-	1	1	1	1	1	1	1	1633073-1		STRIP GUIDE PLATE ASSY	29
-	-	-	-	-	-	-	-				28
-	2	2	2	2	2	2	2	1-22284-0		SPRING, DRAG	27
-	1	1	1	1	1	1	1	356835-1		LEVER, DRAG RELEASE	26
-	1	1	1	1	1	1	1	240792-1		DRAG, TERMINAL	25
-	1	1	1	1	1	1	1	1320928-1		PLATE, STRIP GUIDE	24
-	1	1	1	1	1	1	1	980371-4		SCR,SHC (M4X10) STRIPPER	23
-	1	-	1	1	-	1	-	690472-2		STRIPPER	22
-	1	1	1	1	1	1	1	1-18023-1		SCR,SHC (M4X10) STRIPPER	21
-	4	4	4	4	4	4	4	18025-2		WASHER, LOCK (M4) STRIPPER	20
-	-	1	-	-	1	-	-	690472-1		STRIPPER	19
-	-	-	-	-	-	-	-				18
-	1	-	-	1	-	-	-	1338684-1		HOLDER, SHEAR, FRONT (NO-CUT)	17
-	-	-	-	-	-	-	-				16
-	-	-	-	-	-	-	-				15
-	-	-	-	-	-	-	-				14
-	-	-	-	-	-	-	-				13
-	1	1	1	1	1	1	1	5-22280-0		SPRING, SHEAR	12
-	1	1	1	1	1	1	1	356885-4		STOP, SHEAR	11
-	-	1	1	-	1	1	1	1320921-1		HOLDER, SHEAR, FRONT (CUT)	10
-	1	1	1	1	1	1	1	462006-1		SHEAR, FLOAT (FRONT)	9
-	1	2	2	2	1	1	1	1333225-5		ANVIL	8
-	-	-	-	-	-	-	-				7
-	-	-	-	-	-	-	-				6
-	1	1	1	1	1	1	1	2-455889-0		DEPRESSOR, SHEAR (FRONT)	5
-	1	1	1	1	1	1	1	238011-6		SPACER, BLOCK CRIMPER	4
-	1	2	2	2	1	1	1	4-683453-8		CRIMPER, INSULATION	3
-	1	1	1	1	1	1	1	455888-6		SPACER, CRIMPER	2
-	1	2	2	2	1	1	1	2-568176-5		CRIMPER, WIRE	1

DIMENSIONS: mm [INCHES]			MATL	HT	TR	FIN
DO NOT SCALE PRINT.						
TOLERANCES UNLESS OTHERWISE SPECIFIED:						
1 PLC DEC ±0.5 [.02 IN]						
2 PLC DEC ±						
3 PLC DEC ±						
ANGLES ±						
SURF TEXTURE: ✓						
REMOVE BURRS, BREAK SHARP EDGES RO.38 MAX						
DR	19SEP00	APP	19SEP00			
M	CLIFFORD		F.BACKHURST			
CHK	03-11-00	REL	03-11-00			
L	LOFFHOUSE		M.CLIFFORD			
AMP AMP Incorporated Harrisburg, PA 17105-3608						
NAME			SIDE FEED HD-I APPLICATOR		MACHINE REF	
SCALE			1426090		HD-I APPL	
CAGE CODE			00779		SHEET 1 OF 1	
REV					REV B	

RESTRICTED TO CUSTOMER AND ASSEMBLY DRAWING

THIS DRAWING IS A CONTROLLED DOCUMENT.

LAYOUT L1426090
SET UP GAGE 458637-3

2000
RELEASING FOR PUBLICATION
BY AMP INCORPORATED. ALL RIGHTS RESERVED.

1426090